

**buffet  
&  
banqueting**



## Radici

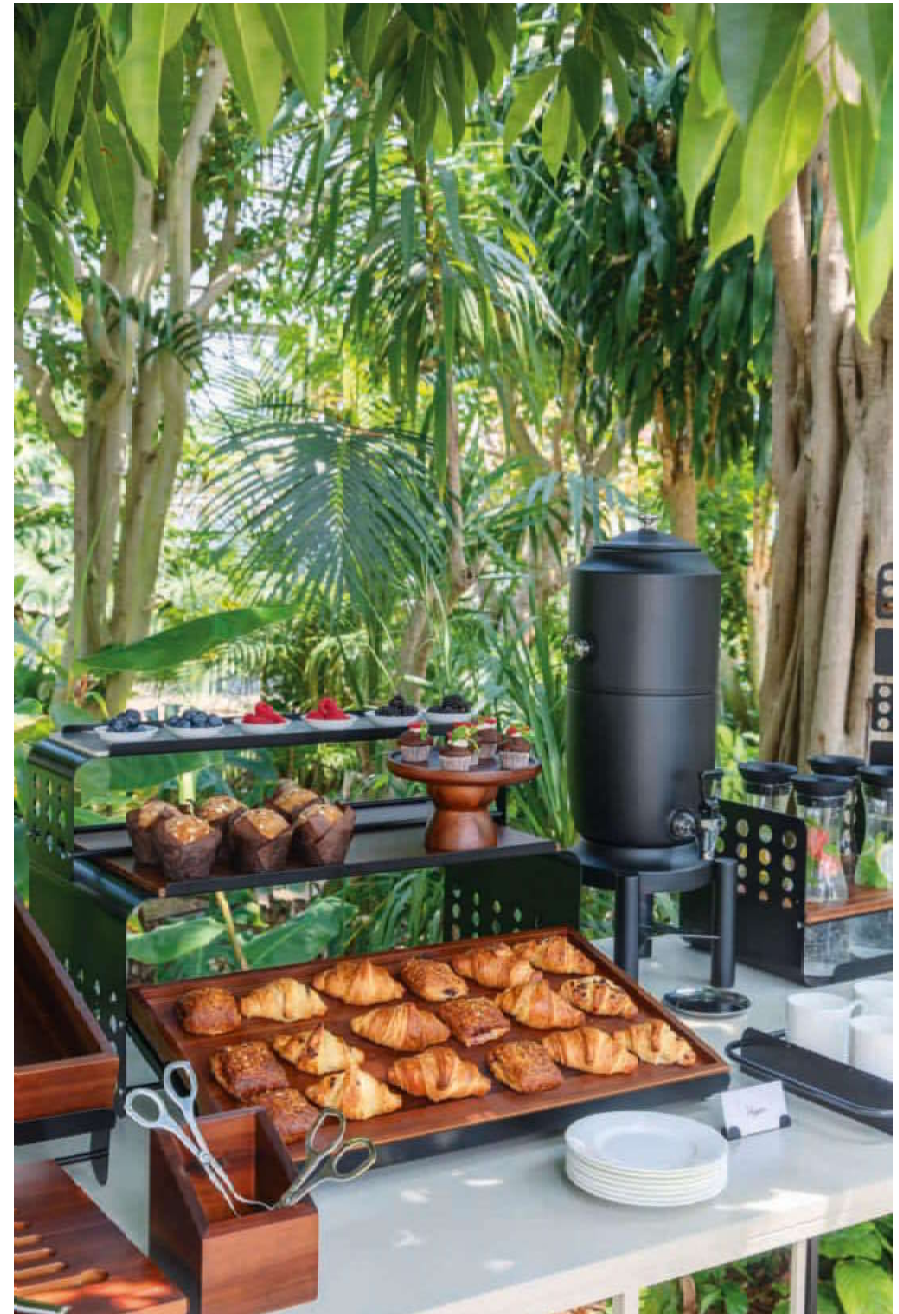
CUSTOM IT, STYLE IT, LIVE IT.

A stylish buffet entirely open to customization, where each service can stand out featuring its own style and function. Entirely developed and designed in Italy, Radici is featured by a unique, functional concept combining superior design, full modularity and versatility of style.

Un buffet elegante interamente aperto alla personalizzazione, dove ogni servizio può essere fatto proprio nello stile e nella funzione. Distinguendosi. Interamente sviluppato e progettato in Italia, Radici unisce un design superiore a un concept funzionale che fa - della modularità e della differenziazione stilistica - i suoi veri punti di forza nonché il proprio carattere distintivo.



Sambonet buffet has the intent to fill the aesthetic gap with a complete system to host at best your guests.



design  
buffet  
Radici

\* IMAGE FOR REPRESENTATIVE PURPOSE. COLORS AND SHAPES MAY BE SUBJECT TO CHANGE.

## Superior Design & Quality within Sambonet DNA

design

buffet

**Radici**



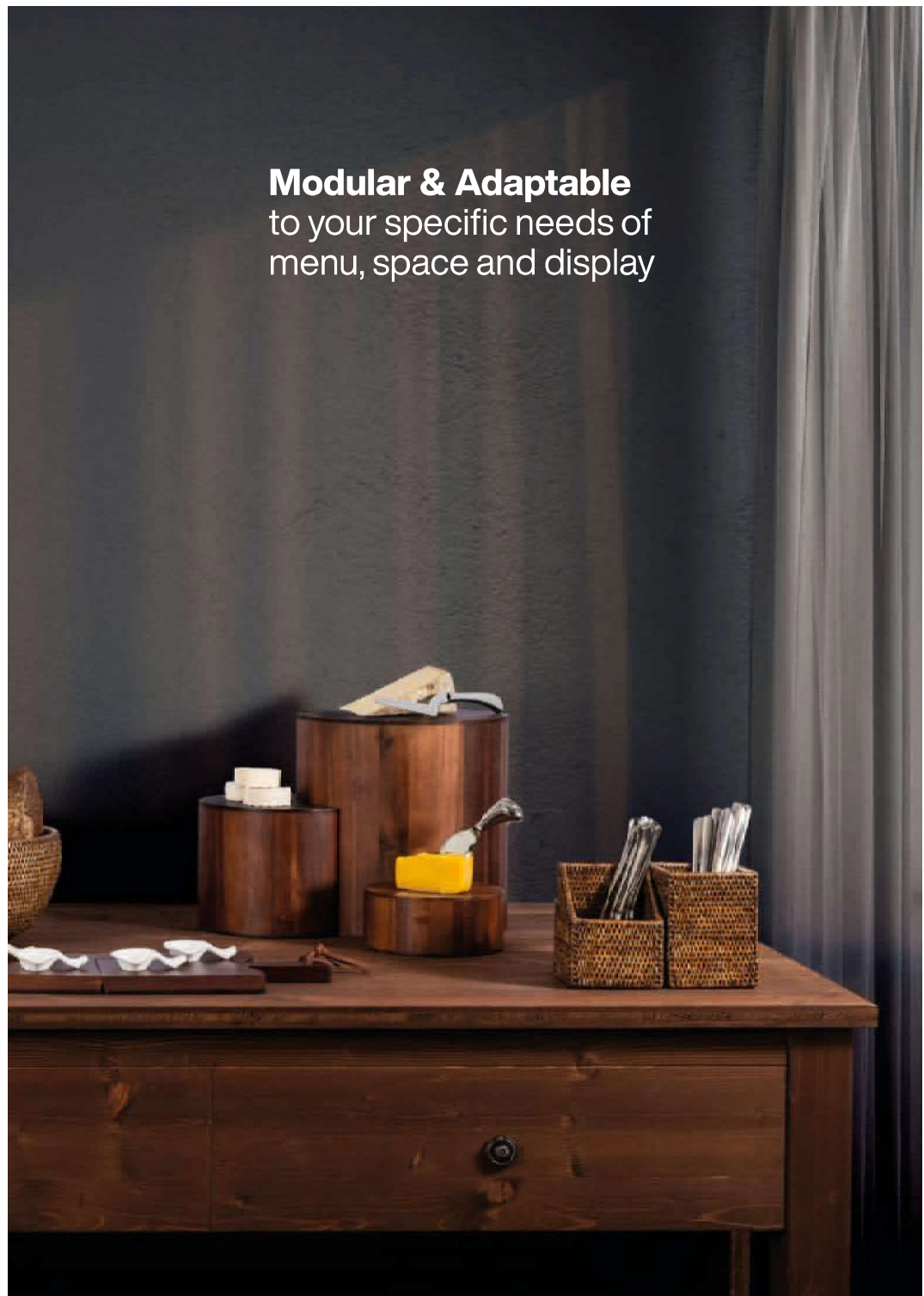
\* IMAGE FOR REPRESENTATIVE PURPOSE. COLORS AND SHAPES MAY BE SUBJECT TO CHANGE.



**Customizable Style**  
through different colors,  
shapes and materials



\* IMAGE FOR REPRESENTATIVE PURPOSE. COLORS AND SHAPES MAY BE SUBJECT TO CHANGE.



**Modular & Adaptable**  
to your specific needs of  
menu, space and display

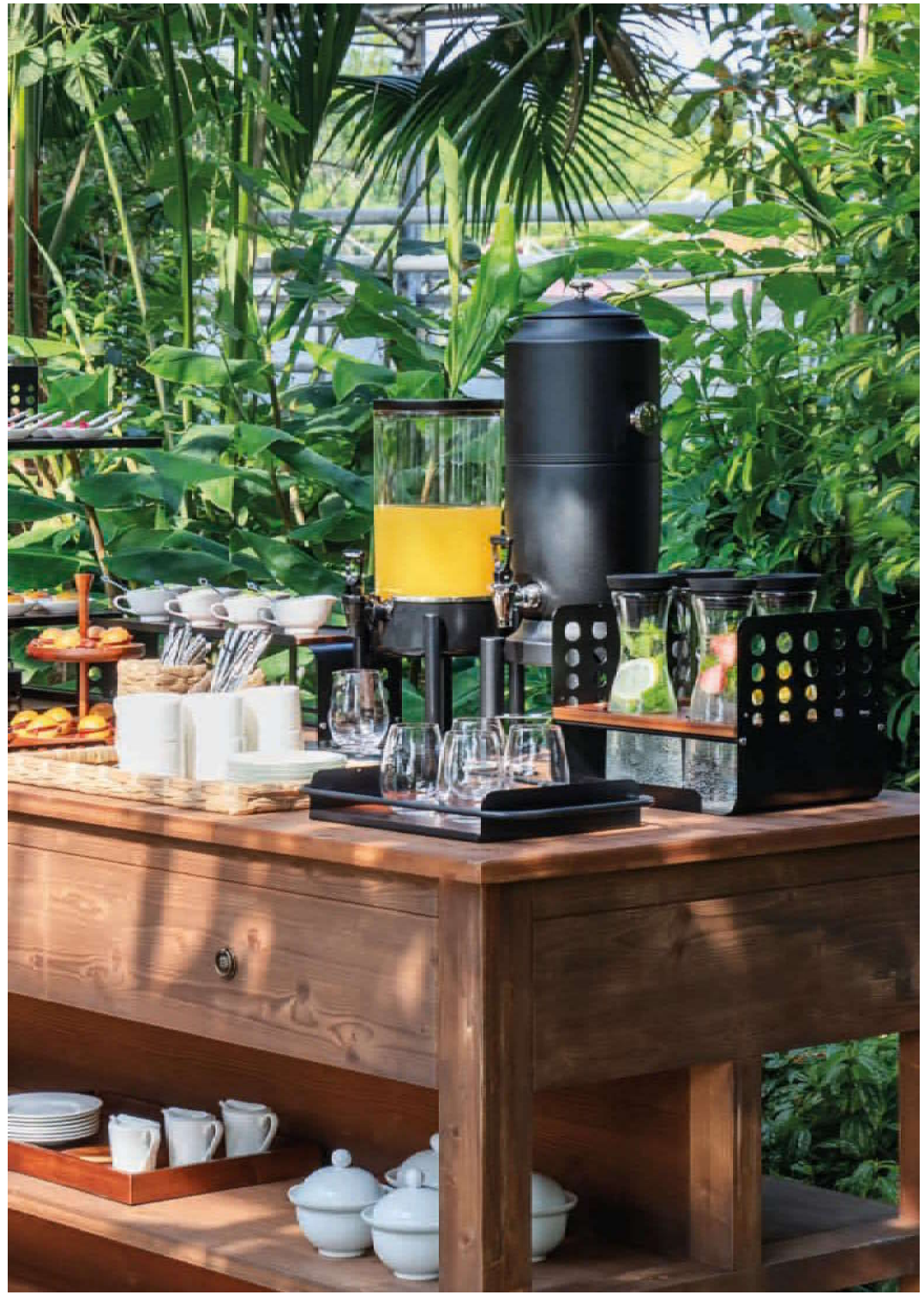
design

buffet

Radici



**Cutting-Edge Technologies**  
laser and water cutting,  
folding machine





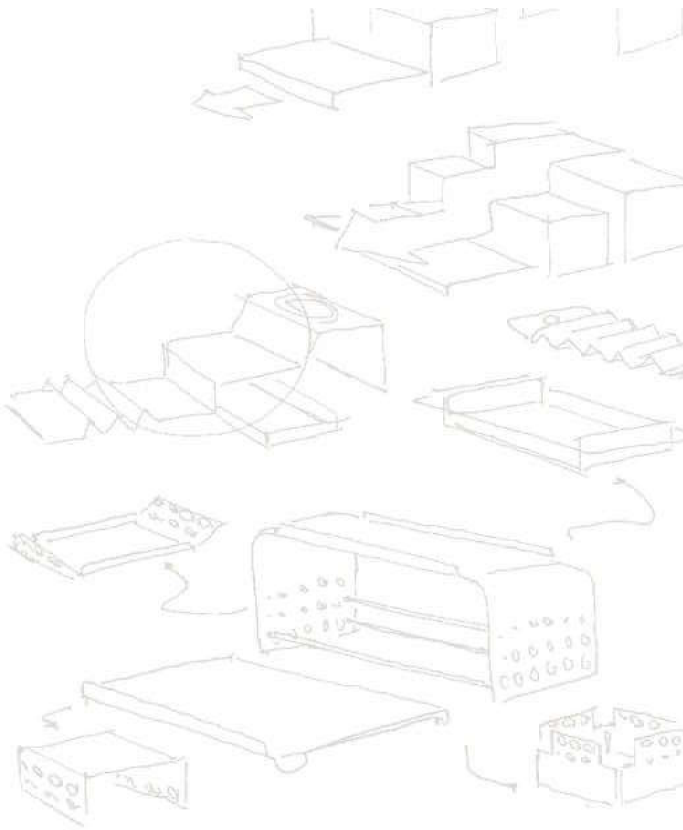
design

buffet

Radici

# Radici Buffet System

CUSTOM IT, STYLE IT, I

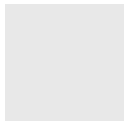


## Materials Structure

### S.Steel



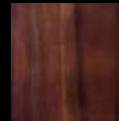
Black



Grey

## Materials Complements

### Wood



Acacia Wood



Rubber Wood



Laquered Wood

### Rattan



### Tiles

Decor A



Marmoreal White

Decor B



Marmoreal Blue

Decor C



Marmoreal Green



Black Marquinia

## Insert

### Wood



**Stand shelf GN 1/1**  
Ripiano alzata GN 1/1  
Regalständer GN 1/1  
Insert étagère GN 1/1  
Estante soporte GN 1/1

**58494-AA** Acacia Wood  
**58494RAA** Rubber Wood  
**58494YAA** Lacquered Grey

55 x 33,3 cm - 21 $\frac{1}{4}$  x 13 $\frac{3}{8}$  in.



**Tray**  
Vassio  
Tablett  
Plateau  
Bandeja

**58494-AB** Acacia Wood  
**58494RAB** Rubber Wood  
**58494YAB** Lacquered Grey

61 x 32,7 cm H 3,3 cm  
24 x 12 $\frac{7}{8}$  in. H 1  $\frac{1}{4}$  in.



**Tray GN 1/1**  
Vassio GN 1/1  
Tablett GN 1/1  
Plateau GN 1/1  
Bandeja GN 1/1

**68216-53** Acacia Wood  
**58497R06** Rubber Wood  
**58497Y06** Lacquered Grey \* with Lid

53 x 32,5 cm H 9 cm  
20 $\frac{7}{8}$  x 12 $\frac{3}{4}$  in. H 3  $\frac{1}{2}$  in.



**Bread cutting board**  
Tagliere pane  
Brotschneidebrett  
Planche à découper  
Tabla de corte

**68217-53** Acacia Wood  
**58217R53** Rubber Wood

53 x 32,5 cm H 5,5 cm  
20 $\frac{7}{8}$  x 12 $\frac{3}{4}$  in. H 2 $\frac{1}{8}$  in.

### Stoneware



**Stand shelf GN 1/1**  
Ripiano alzata GN 1/1  
Regalständer GN 1/1  
Insert étagère GN 1/1  
Estante soporte GN 1/1

**58494-PC** Stoneware Decor A  
**58494-PH** Stoneware Decor B  
**58494-PM** Stoneware Decor C

55 x 33,3 cm  
21 $\frac{1}{4}$  x 13 $\frac{3}{8}$  in.

## Stand GN 1/2

### S.Steel



**Stand GN 1/2**  
Alzata GN 1/2  
Ständer GN 1/2  
Etagère GN 1/2  
Soporte GN 1/2

**58494-03** S/S Black  
**58494Y03** S/S Grey

42,3 x 27,3 cm H 26,5 cm  
16 $\frac{3}{4}$  x 10 $\frac{3}{4}$  in. H 10 $\frac{3}{8}$  in.



**Removable shelf GN 1/2**  
Piano mobile GN 1/2  
Regal Abnehmbar GN 1/2  
Etagère amovible GN 1/2  
Estante extraíble GN 1/2

**58490-02** S/S Black  
**58490Y02** S/S Grey

41,5 x 27,2 cm  
16 $\frac{1}{4}$  x 10 $\frac{3}{4}$  in.

## Insert

### Wood



**Stand shelf GN 1/2**  
Ripiano alzata GN 1/2  
Regalständer GN 1/2  
Insert étagère GN 1/2  
Estante soporte GN 1/2

**58494-AD** Acacia Wood  
**58494RAD** Rubber Wood  
**58494YAD** Lacquered Grey

34,5 x 27,3 cm  
13 $\frac{3}{8}$  x 10 $\frac{3}{4}$  in.



**Tray GN 1/2**  
Vassio GN 1/2  
Tablett GN 1/2  
Plateau GN 1/2  
Bandeja GN 1/2

**58494-AE** Acacia Wood  
**58494RAE** Rubber Wood  
**58494YAE** Lacquered Grey

41 x 26,7 cm H 3,3 cm  
16 $\frac{1}{4}$  x 10 $\frac{3}{8}$  in. H 1  $\frac{1}{4}$  in.



**Bread cutting board**  
Tagliere pane  
Brotschneidebrett  
Planche à découper  
Tabla de corte

**68217-32** Acacia Wood

32,5 x 26,5 cm H 5,5 cm  
12 $\frac{3}{4}$  x 10 $\frac{3}{8}$  in. H 2 $\frac{1}{8}$  in.

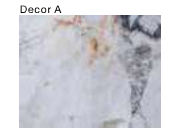


**Tray GN 1/2**  
Vassio GN 1/2  
Tablett GN 1/2  
Plateau GN 1/2  
Bandeja GN 1/2

**68216-32** Acacia Wood  
**58497R05** Rubber Wood  
**58497Y05** Lacquered Grey \* with Lid

32,5 x 26,5 cm H 9 cm  
12 $\frac{3}{4}$  x 10 $\frac{3}{8}$  in. H 3 $\frac{1}{2}$  in.

### Stoneware



**Stand shelf GN 1/2**  
Ripiano alzata GN 1/2  
Regalständer GN 1/2  
Insert étagère GN 1/2  
Estante soporte GN 1/2

**58494-PE** Stoneware Decor A  
**58494-PJ** Stoneware Decor B  
**58494-PO** Stoneware Decor C

34,5 x 27,3 cm  
13 $\frac{3}{8}$  x 10 $\frac{3}{4}$  in.

## Insert

### Wood



**Stand shelf GN 2/4**  
Ripiano alzata GN 2/4  
Regalständer GN 2/4  
Insert étagère GN 2/4  
Estante soporte GN 2/4

**58494-AC** Acacia Wood  
**58494RAC** Rubber Wood  
**58494YAC** Lacquered Grey

55 x 17 cm - 21½ x 6¾ in.

### Stoneware

Decor A



Decor B



Decor C



**Stand shelf GN 2/4**  
Ripiano alzata GN 2/4  
Regalständer GN 2/4  
Insert étagère GN 2/4  
Estante soporte GN 2/4

**58494-PD** Stoneware Decor A  
**58494-PI** Stoneware Decor B  
**58494-PN** Stoneware Decor C

55 x 17 cm  
21½ x 6¾ in.



**Stand GN 2/4**  
Alzata GN 2/4  
Ständer GN 2/4  
Étagère GN 2/4  
Soporte GN 2/4

**58494-02** S/S Black  
**58494Y02** S/S Grey

62,3 x 17 cm H 16,5 cm  
24½ x 6¾ in. H 6½ in.



**Removable shelf GN 1/1**  
Piano mobile GN 1/1  
Regal Abnehmbar GN 1/1  
Étagère amovible GN 1/1  
Estante extraíble GN 1/1

**58490-01** S/S Black  
**58490Y01** S/S Grey

61,5 x 33,2 cm  
24¼ x 13¼ in.

## Insert

### Wood



**Tray GN 1/2**  
Vassoio GN 1/2  
Tablett GN 1/2  
Plateau GN 1/2  
Bandeja GN 1/2

**68216-32** Acacia Wood  
**58497R05** Rubber Wood  
**58497Y05** Lacquered Grey \*with Lid

32,5 x 26,5 cm H 9 cm  
12¾ x 10¾ in. H 3½ in.



**Tray GN 1/1**  
Vassoio GN 1/1  
Tablett GN 1/1  
Plateau GN 1/1  
Bandeja GN 1/1

**68216-53** Acacia Wood  
**58497R06** Rubber Wood  
**58497Y06** Lacquered Grey \*with Lid

53 x 32,5 cm H 9 cm  
20¾ x 12¾ in. H 3½ in.



**Tray GN 1/1**  
Vassoio GN 1/1  
Tablett GN 1/1  
Plateau GN 1/1  
Bandeja GN 1/1

**58494-AB** Acacia Wood  
**58494RAB** Rubber Wood  
**58494YAB** Lacquered Grey

61 x 32,7 cm H 3,3 cm  
24 x 12¾ in. H 1¼ in.

## Towers

### S.Steel



**Tower**  
Colonna verticale  
Säule  
Colonne  
Torreta

**58492-42** S/S Black - Acacia wood base  
**58492Y42** S/S Grey - Acacia wood base

**new** **58492-4R** S/S Black - Rubber wood base  
**new** **58492Y4R** S/S Grey - Rubber wood base

34 x 33 cm H 42 cm  
13¾ x 13 in. H 16½ in.



**Tower**  
Colonna verticale  
Säule  
Colonne  
Torreta

**58492-62** S/S Black - Acacia wood base  
**58492Y62** S/S Grey - Acacia wood base

**new** **58492-6R** S/S Black - Rubber wood base  
**new** **58492Y6R** S/S Grey - Rubber wood base

34 x 33 cm H 62 cm  
13¾ x 13 in. H 24¾ in.

## Shelves

### Wood



**Tower shelf**  
Ripiano colonna  
Regal für Säule  
Étagère Colonne  
Estante Torreta

**58492** Acacia Wood  
**58492R** Rubber Wood

**-AC** 27 x 34,9 cm - 10¾ x 13¾ in.  
**-AE** 52 x 34,9 cm - 20¾ x 13¾ in.  
**-AD** 87,6 x 35 cm - 34½ x 13¾ in.



**Tower wave-shaped shelf**  
Ripiano colonna sagomato  
Wellenförmige Regal Säule  
Étagère ondulé colonne  
Estante ondulado torreta

**58492-AF** Acacia Wood  
**58492RAF** Rubber Wood

27 x 26,4 cm - 10¾ x 10¾ in.



**Shelf for 4 bowls**  
Piantetto per 4 coppe  
Regal für 4 Schalen  
Étagère pour 4 bols  
Estante para 4 copas

**58492-AB** Acacia Wood  
**58492RAB** Rubber Wood

44,3 x 34,9 cm - 17½ x 13¾ in.



**Shelf for 2 bowls**  
Piantetto per 2 coppe  
Regal für 2 Schalen  
Étagère pour 2 bols  
Estante para 2 copas

**58492-AA** Acacia Wood  
**58492RAA** Rubber Wood

52 x 34,9 cm - 20¾ x 13¾ in.

## Tray

S.Steel



**Large tray**  
Vassoio grande  
Tablett-Groß  
Plateau large  
Bandeja grande

**58491-02** S/S Black  
**58491Y02** S/S Grey

46,5 x 20,5 cm H 3,8 cm  
18 1/4 x 8 1/8 in. H 1 1/2 in.



**Small tray**  
Vassoio piccolo  
Tablett-Klein  
Plateau petit  
Bandeja pequeña

**58491-01** S/S Black  
**58491Y01** S/S Grey

35,5 x 16 cm H 3,8 cm  
14 x 6 1/4 in. H 1 1/2 in.



**Tray GN 1/1**  
Vassoio GN 1/1  
Tablett GN 1/1  
Plateau GN 1/1  
Bandeja GN 1/1

**58491-04** S/S Black  
**58491Y04** S/S Grey

61,8 x 32,8 cm H 6 cm  
24 3/8 x 12 7/8 in. H 2 3/8 in.



**Tray GN 1/2**  
Vassoio GN 1/2  
Tablett GN 1/2  
Plateau GN 1/2  
Bandeja GN 1/2

**58491-05** S/S Black  
**58491Y05** S/S Grey

41,3 x 27,2 cm H 6 cm  
16 1/2 x 10 3/4 in. H 2 3/8 in.

## Insert

Wood



**Insert for large tray**  
Inserto per vassoio grande  
Tablett-Einsatz Groß  
Insert de plateau grand  
Inserto bandeja grande

**new** **58491-AB** Acacia Wood  
**58491RAB** Rubber Wood  
**58491YAB** Lacquered Grey

31 x 20,7 cm - 12 1/4 x 8 1/8 in.



**Insert for small tray**  
Inserto per vassoio piccolo  
Tablett-Einsatz Klein  
Insert de plateau petit  
Inserto bandeja pequeña

**new** **58491-AA** Acacia Wood  
**58491RAA** Rubber Wood  
**58491YAA** Lacquered Grey

19,8 x 16,2 cm - 7 7/8 x 6 3/8 in.



**Tray insert GN 1/1**  
Inserto vassoio GN 1/1  
Tablett-Einsatz GN 1/1  
Insert de plateau  
Inserto bandeja GN 1/1

**new** **58491-AC** Acacia Wood  
**58491RAC** Rubber Wood

52,5 x 32 cm - 20 5/8 x 12 5/8 in.



**Tray insert GN 1/2**  
Inserto vassoio GN 1/2  
Tablett-Einsatz GN 1/2  
Insert de plateau  
Inserto bandeja GN 1/2

**new** **58491-AD** Acacia Wood  
**58491RAD** Rubber Wood

32 x 26 cm - 12 5/8 x 10 1/4 in.

Stoneware



**Tray insert GN 1/1**  
Inserto vassoio GN 1/1  
Tablett-Einsatz GN 1/1  
Insert de plateau  
Inserto bandeja GN 1/1

**58491-PA** Stoneware Decor A  
**58491-PF** Stoneware Decor B  
**58491-PK** Stoneware Decor C

52,5 x 32 cm - 20 5/8 x 12 5/8 in.



**Tray insert GN 1/2**  
Inserto vassoio GN 1/2  
Tablett-Einsatz GN 1/2  
Insert de plateau  
Inserto bandeja GN 1/2

**58491-PB** Stoneware Decor A  
**58491-PG** Stoneware Decor B  
**58491-PL** Stoneware Decor C

32 x 26 cm - 12 5/8 x 10 1/4 in.

## Beverage

S.Steel



**4-Cereal/Juice pitcher Bar**  
Espositore 4 brocche bevande/cereali  
4-Getreide-/Saftkrug-Bar  
Présentoir 4 carafes à céréales/jus  
Expositor 4 jarras zumo/cereales

**58499-04** S/S Black  
**58499Y04** S/S Grey

Equipped with  
**58879-55** 2 eutectic pads  
**44878B12** Food pan GN 1/2

34 x 27,3 cm H 25 cm  
13 3/8 x 10 3/4 in., H 9 7/8 in.



**2-Cereal/Juice pitcher Bar**  
Espositore 2 brocche bevande/cereali  
2-Getreide-/Saftkrug-Bar  
Présentoir 2 carafes à céréales/jus  
Expositor 2 jarras zumo/cereales

**58499-02** S/S Black  
**58499Y02** S/S Grey

Equipped with  
**58489-VA** 2 eutectic pads  
**14807B06** Food pan GN 1/3

33,3 x 18,2 cm H 14,2 cm  
13 1/8 x 7 1/8 in., H 5 5/8 in.



**Juice dispenser**  
Distributore succhi  
Saftdispenser  
Distributeur à jus  
Dispensador de zumo

**58373-07** S/S Black - Acacia wood lid  
**58373Y07** S/S Grey - Acacia wood lid

**new** **58373-R7** S/S Black - Rubber wood lid  
**58373YR7** S/S Grey - Rubber wood lid

33,4 x 20,9 cm H 52,4 cm 7 fl  
13 1/8 x 8 1/4 in., H 20 3/8 in., 1.8 Gal.

## Accessories



**Shelf for 4-pitchers bar**  
Pianetto per espositore 4 brocche  
Regal Für 4-Krüge-Bar  
Étagère pour présentoir 4 carafes  
Estante para expositor 4 jarras

**new** **58499-AA** Acacia Wood  
**58499RAA** Rubber Wood  
**58499YAA** Lacquered Grey

33,4 x 26,8 cm - 13 1/8 x 10 5/8 in.



**Juice pitcher**  
Caraffa  
Saftkanne  
Carafe à jus  
Jarra zumo

**68270-15** Glass/S.Steel  
Ø 10 cm H 32 cm 1,5fl.  
Ø 3 7/8 in., H 12 5/8 in., 50 3/4 oz.



**Pitcher**  
Brocca  
Krug  
Carafe  
Jarra

**Lid for pitcher**  
Coperchio brocca  
Saftkannendeckel  
Couvercle pour carafe  
Tapa para jarra

**58401-EP** **58401-S/S**

2lt - 67 oz.

-EQ Water / Juice  
-ER Cereal



**Cooling set, 2 pcs**  
Set 2 eutectici  
Kühlakku, 2er Set  
Set 2 cartouches eutectiques  
Juego 2 pastillas de eutecticas

**58489-VA**



**Eutectic pad**  
Contentitore eutettico  
Kühlakku  
Cartouche eutectique  
Placa eutectica

**58879-55**

16,5 x 13,5 cm H 3 cm  
6 1/2 x 5 3/8 in., H 1 1/8 in.



**Pan GN 1/2**  
Bacchetta GN 1/2  
Behälter GN 1/2  
Bac GN 1/2  
Cubeta GN 1/2

**44878B12** Melamine

53 x 16,2 cm H 10 cm  
20 7/8 x 6 3/8 in., H 3 7/8 in.



**Food pan GN 1/3**  
Bacchetta GN 1/3  
GN-Behälter 1/3  
Bac GN 1/3  
Baño-maria GN 1/3

**14807B06** PC

32,5 x 18 cm H 6,5 cm  
12 7/8 x 7 1/8 in., H 2 1/2 in.

design

buffet

Radici

design

buffet

Radici

## Coffee

S.Steel



**Coffee Dispenser**  
Scaldacaffè  
Kaffeedispenser  
Rechaud à café  
Calentador de café

**Electric heating - European standard**  
S/S Black: 58371E06 / 58371E09 / 58371E12  
S/S Grey: 58371YE6 / 58371YE9 / 58371YE2

**Electric heating - US standard**  
S/S Black: 58371U06 / 58371U09 / 58371U12  
S/S Grey: 58371YU6 / 58371YU9 / 58371YU2

-06 H 54 cm 6 lt - H 21 ¼ in. 1.6 Gal.  
-09 H 60 cm 9 lt - H 23 ¾ in. 2.4 Gal.  
-12 H 68 cm 12 lt - H 24 ¾ in. 3.2 Gal.

## Warm Food

S.Steel



**Chafing dish round**  
Scaldavivande tondo  
Chafing Dish , rund  
Chafing dish rond  
Chafing dish redondo

**Suitable for induction cooker**  
(58162-RA, 58162-RB):

**58196** S/S Black  
**58196Y** S/S Grey

-30 Ø 30 cm - Ø 11 ¾ in.  
-36 Ø 36 cm - Ø 14 ¼ in.  
-40 Ø 40 cm - Ø 15 ¾ in.

**Electric heating - European standard**  
S/S Black: 58196E30 / 58196E36 / 58196E40  
S/S Grey: 58196YE0 / 58196YE6 / 58196YE4

**Electric heating - US standard**  
S/S Black: 58196U36 / 58196U40  
S/S Grey: 58196YU6 / 58196YU4



**Heated showcase GN 1/1**  
Vetrina riscaldata  
Buffet-Vitrine, Beheizt  
Vitrine chauffée  
Vitrina calefactada

**58498-60** S/S Black  
**58498Y60** S/S Grey

55,4 x 35 cm H 20,8 cm  
21 ¼ x 13 ¾ in. H 8 ¼ in.

## Cold Food

S.Steel



**Cooled showcase**  
Vetrina refrigerata  
Buffet-Vitrine, Kühlbar  
Vitrine réfrigérée  
Vitrina refrigerada

**new** **58496-21** S/S Black GN 2/1  
**58496Y21** S/S Grey GN 2/1

67,5 x 58 cm H 22,5 cm  
26 ½ x 22 ¾ in. H 8 ¾ in.

**58496-60** S/S Black GN 1/1  
**58496Y60** S/S Grey GN 1/1

55,4 x 39 cm H 20,8 cm  
21 ¼ x 15 ¾ in. H 8 ¼ in.

**58496-24** S/S Black GN 2/4  
**58496Y24** S/S Grey GN 2/4

55,4 x 18 cm H 20,8 cm  
21 ¼ x 7 in. H 8 ¼ in.

Equipped with  
**58496-P2** Black Marquina stoneware insert, GN 2/1  
**F5238213** eutectic pads  
**14301-06** Tray GN 2/1

Equipped with  
**58496-T1** S/Steel tray, GN 1/1  
**F523821-23** 3 eutectic pads  
**44878-11** food pan GN 1/1

Equipped with  
**58496-T4** S/Steel tray, GN 2/4  
**41443-AE** 4 eutectic pads  
**44878-24** Food pan GN 2/4

## Insert

Black Marquina Stoneware



**Tray insert**  
Inserto vassoio  
Tablett-Einsatz  
Insert de plateau  
Inserto bandeja

**new** **58496-P2** GN 2/1  
65,1x52,8 cm - 26x20 ¾ in.  
**new** **58496-P1** GN 1/1  
54,6x33,8 cm - 21 ½x13 ¼ in.  
**new** **58496-P4** GN 2/4  
54,6x16,7 cm - 21 ½x6 ½ in.

Stainless Steel

**Tray insert**  
Inserto vassoio  
Tablett-Einsatz  
Insert de plateau  
Inserto bandeja

**58496-T2** GN 2/1  
65,1x52,8 cm - 26x20 ¾ in.  
**58496-T1** GN 1/1  
54,6x33,8 cm - 21 ½x13 ¼ in.  
**58496-T4** GN 2/4  
54,6x16,7 cm - 21 ½x6 ½ in.

## Cold Food

S.Steel



**Refrigerated Display**  
Espositore Refrigerato  
Kühlregal  
Présentoir Réfrigéré  
Expositor Refrigerado

**58499-01** S/S Black  
**58499Y01** S/S Grey

34 x 27,3 x 25 cm  
13 ¼ x 10 ¾ x 9 ¾ in.

Equipped with  
**41443-AE** 4 eutectic pads  
**44878B12** Food pan GN 1/2

## Accessories



**Round bowl**  
Ciotola tonda  
Schüssel, rund  
Bol ronde  
Bol redondo

**41400-AA** Glass  
Ø 23 cm h 10,5 cm 2,5 lt



**Hinged lid**  
Coperchio a ribalta  
Klappdeckel  
Couvercle rabattable  
Tapa abatible

**41400-AB** Plexiglas  
Ø 23,5 cm - 9 ¼ in.

## Complements

S.Steel



**Stand**  
Alzata  
Ständer  
Etagère  
Soporte

**58494-04** S/S Black  
**58494Y04** S/S Grey

20 x 18,6 cm H 10 cm  
7 ¾ x 7 ¼ in. H 3 ¾ in.



**Stand**  
Alzata  
Ständer  
Etagère  
Soporte

**58494-05** S/S Black  
**58494Y05** S/S Grey

31 x 23 cm H 12 cm  
12 ¼ x 9 in. H 4 ¾ in.



**Round tray**  
Vassoio tondo  
Ausstellplatte, rund  
Plateau rond  
Bandeja redonda

**58026** S/S Black  
**58026Y** S/S Grey

-31 Ø 31 cm - Ø 12 ¼ in.  
-45 Ø 45 cm - Ø 17 ¾ in.



**Tray**  
Vassoio  
Tablett  
Plateau  
Bandeja

**58491-03** S/S Black  
**58491Y03** S/S Grey

36 x 25 cm H 2,9 cm  
14 ¼ x 9 ¾ in. H 1 ¼ in.



**Napkin holder**  
Portatovagliolo  
Serviettenhalter  
Porte-serviettes  
Servillettero

**58495** S/S Black  
**58495Y** S/S Grey

-01 15 x 15 cm H 10 cm  
5 ¾ x 5 ¾ in. H 3 ¾ in.  
-02 19,5 x 19,5 cm H 10 cm  
7 ¾ x 7 ¾ in. H 3 ¾ in.



**Label holder**  
Porta etichetta  
Etikettenhalter  
Porte-étiquette  
Portaetiquetas

**58493-09** S/S Black  
**58493Y09** S/S Grey

9 x 3 cm H 4 cm  
3 ½ x 1 ¼ in. H 1 ½ in.

# Complements

Rattan



**Cake stand**  
Alzeta torta  
Tortensänder  
Guéridon pâtisier  
Pedestal para tartas

- new 58235-23**  
Ø 23 cm h 12 cm  
Ø 9 in. h 4 ¾ in.
- new 58235-30**  
Ø 30 cm h 14 cm  
Ø 11 ¾ in. h 5 ½ in.
- new 58235-38**  
Ø 38 cm h 17 cm  
Ø 15 in. h 6 ¾ in.



**Bowl**  
Ciotola  
Schüssel  
Bol  
Cuenco

- new 58232-26**  
Ø 26,5 cm h 15,5 cm  
Ø 10 ½ in. h 6 ¼ in.
- new 58232-30**  
Ø 30,5 cm h 18 cm  
Ø 12 in. h 7 ¼ in.



**Bowl**  
Ciotola  
Schüssel  
Bol  
Cuenco

- new 58208-51**  
Ø 51,5 cm h 12 cm  
Ø 20 ¼ in. h 4 ¾ in.



**Container**  
Contentitore  
Behälter  
Conteneur  
Contenedor

- new 58233-01**  
11x11 cm h 14 cm  
4 ¾x4 ¾ in. h 5 ½ in.
- new 58233-03**  
25,5x12 cm h 8 cm  
10 ¾x4 ¾ in. h 3 ¼ in.
- new 58233-04**  
26,5x20,5 cm h 8 cm  
10 ½x8 ¼ in. h 3 ¼ in.



**Cloche**  
Cloche  
Haube  
Cloche  
Campana

- new 58231-18**  
Ø 17 cm h 10 cm  
Ø 6 ¾ in. h 3 ¾ in.
- new 58231-24**  
Ø 21,5 cm h 14 cm  
Ø 8 ½ in. h 5 ½ in.
- new 58231-32**  
Ø 31 cm h 16 cm  
Ø 12 ¼ in. h 6 ¼ in.



**Stand**  
Alzata  
Gestell  
Étagère  
Soporte

- new 58230-18**  
Ø 19,5 cm h 3 cm  
Ø 7 ¾ in. h 1 ½ in.
- new 58230-24**  
Ø 24,5 cm h 3 cm  
Ø 9 ¾ in. h 1 ½ in.
- new 58230-32**  
Ø 33,5 cm h 3 cm  
Ø 13 ¼ in. h 1 ½ in.



**Tilted container**  
Contentitore inclinato  
Schiff Behälter  
Conteneur incliné  
Contenedor inclinado

- new 58233-02**  
11x11 cm h 14-8 cm  
4 ¾x4 ¾ in. h 5 ½ - 3 ¼ in.



**Tray**  
Vassoio  
Tablett  
Plateau  
Bandeja

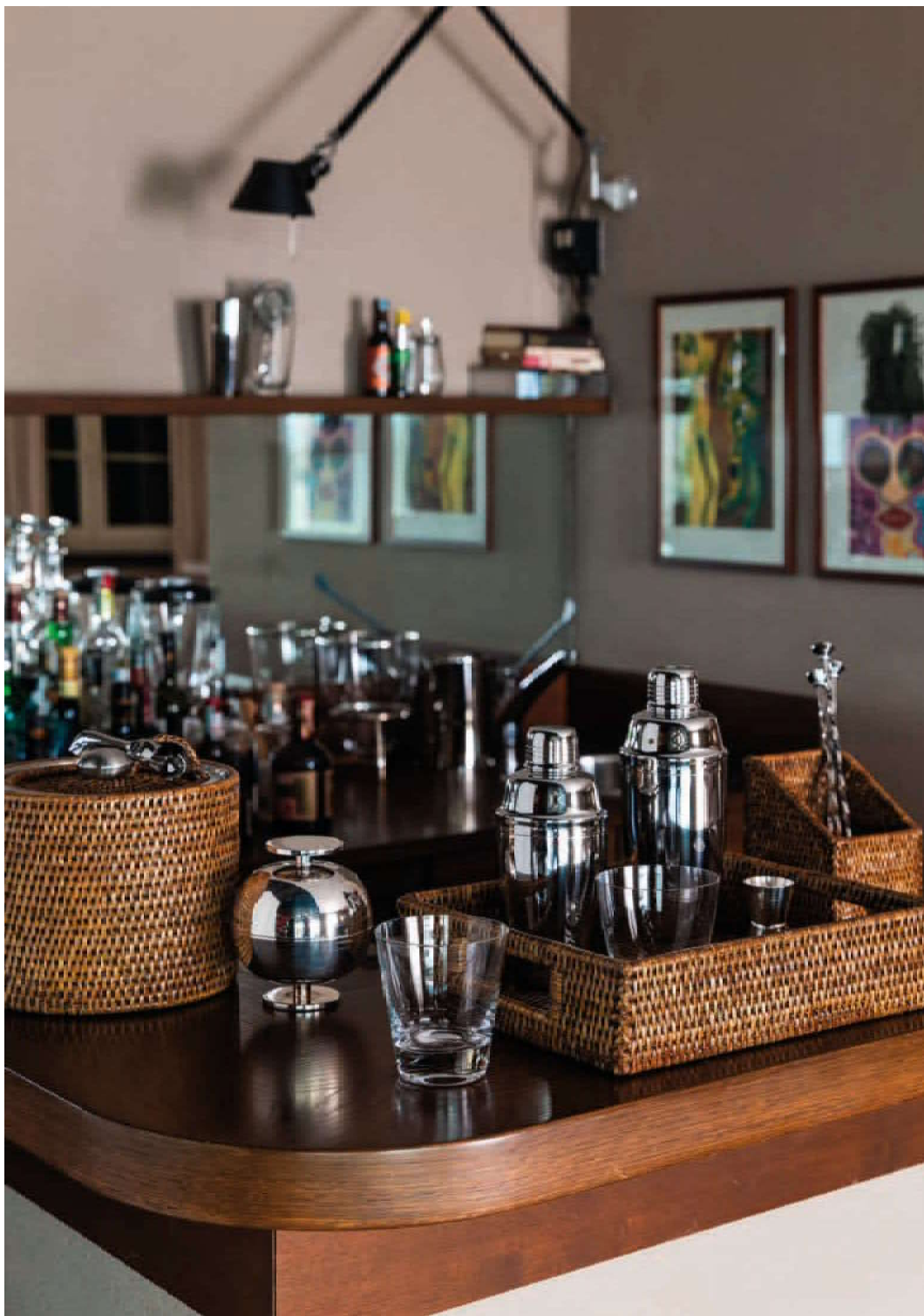
- new 58233-05**  
32,5x26,5 cm h 8 cm  
12 ¾x10 ¾ in. h 3 ¼ in.
- new 58233-06**  
53x32,5 cm h 8 cm  
20 ¾x12 ¾ in. h 3 ¼ in.

design

buffet

design

buffet



**Thermos**  
Caraffa termica  
Thermokaraffe  
Carafe thermique  
Jarra térmica

**new** 58234-01  
Ø 15 cm h 23 cm 1 L  
Ø 5 7/8 in, h 9 in, 33,79 oz.

**new** 58234-02  
Ø 16 cm h 25,5 cm 2 L  
Ø 6 1/4 in, h 10 in, 67,58 oz.



**Ice bucket**  
Secchio ghiaccio  
Eisbehälter  
Seau à glace  
Cubitera hielo

**new** 58234-03  
Ø 21 cm h 17 cm  
Ø 8 1/4 in, h 6 3/4 in.



**Napkin holder**  
Portatovaglioli  
Serviettenhalter  
Porte-serviettes  
Servilletero

**new** 58236-23  
23x23 cm h 7 cm  
9x9 in, h 2 3/4 in.



**Condiment holder**  
Portacondimenti  
Geschirrständer  
Porte-vaisselle  
Escurreplatos

**new** 58237-20  
Ø 20 cm h 13 cm  
Ø 7 7/8 in, h 5 1/4 in.

design

buffet

# Complements

Wood



**Bowl**  
Ciotola  
Schüssel  
Bol  
Cuenco

**new** 58232R16 Rubber Wood  
68210-16 Acacia Wood

Ø cm 16 h cm 10  
Ø 6 ¼ in. H 3 ¾ in.

**new** 58232R22 Rubber Wood  
68210-22 Acacia Wood

Ø cm 22 h cm 13  
Ø 8 ¾ in. H 5 ¼ in.

**new** 58232R26 Rubber Wood  
68210-26 Acacia Wood

Ø cm 26 h cm 15,5  
Ø 10 ¼ in. H 6 ¼ in.

**new** 58232R30 Rubber Wood  
68210-30 Acacia Wood

Ø cm 29,5 h cm 18  
Ø 11 ¾ in. H 7 ¼ in.



**Stand**  
Alzata  
Ständer  
Etagère  
Soporte

**new** 58494R07 Rubber Wood  
68201-20 Acacia Wood  
58494Y07 Lacquered Grey

Ø cm 19,8 h cm 11  
Ø 7 ¾ in. H 4 ¾ in.

**new** 58494R08 Rubber Wood  
68201-25 Acacia Wood  
58494Y08 Lacquered Grey

Ø cm 24,8 h cm 11  
Ø 9 ¾ in. H 4 ¾ in.

**new** 58494R09 Rubber Wood  
68201-30 Acacia Wood  
58494Y09 Lacquered Grey

Ø cm 29,9 h cm 14  
Ø 11 ¾ in. H 5 ½ in.

**new** 58494R10 Rubber Wood  
68201-35 Acacia Wood  
58494Y10 Lacquered Grey

Ø cm 34,7 h cm 14  
Ø 13 ¾ in. H 5 ½ in.



**Bowl ring base**  
Base per ciotole  
Schüsselsoclet  
Anneau pour bol  
Base para cuenco

**new** 58232R23 Rubber Wood  
68210-23 Acacia Wood

Ø cm 23 h cm 5  
Ø 9 in. H 2 in.

Suitable for bowls - Adatto a ciotole:  
58232R22 / 68210-22  
58232R26 / 68210-26  
58232R30 / 68210-30



**Dome cover rest**  
Supporto cloche  
Haubenhalterung  
Support à cloche  
Soporte para cloche

**new** 58218R14 Rubber Wood  
68218-14 Acacia Wood

cm 14x14 h cm 9,5  
5 ½ x 5 ½ in. h 3 ¾ in.

# Complements

Wood



**Box**  
Contentitore  
Behälter  
Boîte  
Contenedor

**new** 58497R04 Rubber Wood  
68216-02 Acacia Wood  
58497Y04 Lacquered Grey

26,5 x 20,5 cm H 8 cm  
10 ½ x 8 ¼ in. H 3 ¼ in.



**Box**  
Contentitore  
Behälter  
Boîte  
Contenedor

**new** 58497R03 Rubber Wood  
68216-01 Acacia Wood  
58497Y03 Lacquered Grey

26,5 x 12 cm H 8 cm  
10 ½ x 4 ¾ in. H 3 ¼ in.



**Box**  
Contentitore  
Behälter  
Boîte  
Contenedor

**new** 58497R01 Rubber Wood  
68215-01 Acacia Wood  
58497Y01 Lacquered Grey

11 x 11 cm H 14 cm  
4 ¾ x 4 ¾ in. H 5 ½ in.



**Tilted box**  
Contentitore inclinato  
Schif Behälter  
Boîte inclinée  
Contenedor inclinado

**new** 58497R01 Rubber Wood  
68215-02 Acacia Wood 58497R02  
Lacquered Grey

11 x 11 cm H 14-8 cm  
4 ¾ x 4 ¾ in. H 5 ½ - 3 ¼ in.



Composition Example  
For more details contact our customer service

## Small Display

The right set for any space needs

Width 1 m — 39<sup>3</sup>/<sub>8</sub> in.

Height 0,7 m - 27<sup>1</sup>/<sub>2</sub> in.

### Cereals

Tower wave shaped shelf  
58492-AF

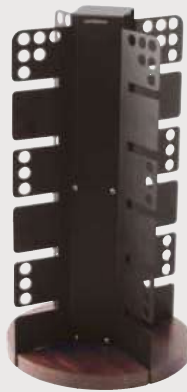


### Jar with seeds

Tower shelf  
58492-AC



Tower  
58492-62



### Fruit / Yogurt / Salad bowls

Shelf for 2 bowls  
58492-AA



### Various Topping

Shelf for 4 bowls  
58492-AB



### Accessories

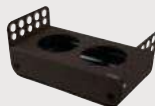
#### Cold Beverage

4-Cereals/Juice pitcher Bar  
58499-04



#### Butter

2-Cereals/Juice pitcher Bar  
58499-02



#### Tableware

Small tray  
58491-01



Insert for small tray  
58491-AA



Label holder  
58493-09



Napkin holder  
58495-01



Width 1,60 m — 63 in.

Height 0,35 m - 13<sup>3</sup>/<sub>4</sub> in.

### Croissant / Muffin

Removable shelf GN 1/1  
58490-01



Stand GN 2/4  
58494-02



Stand GN 1/1  
58494-01



### Cakes

Stand  
58494-04



Stand  
58494-05



### Breadsticks / Bread

Removable shelf GN 1/2  
58490-02



Stand GN 1/2  
58494-03



Box  
68216-01



Box  
68216-02



Bread cutting board  
68217-32



### Accessories

#### Gres Tiles

Insert for stand GN 1/1 — GN 1/2 — GN 2/4

Decor A



Decor B



Decor C



Stand shelf GN 1/1  
58494-PC Decor A  
58494-PH Decor B  
58494-PM Decor C

Stand shelf GN 2/4  
58494-PD Decor A  
58494-PI Decor B  
58494-PN Decor C

#### Laquered Wood

Insert for stand GN 1/1 — GN 2/4

Stand shelf GN 1/1  
58494YAA



Stand shelf GN 2/4  
58494YAC



Tray GN 1/1  
58494YAB



design

buffet

Radici

design

buffet

Radici

Composition Example  
For more details contact our customer service

## Large Display

The right set for any space needs

Width 1,50 m — 59 in.



### Accessories

#### Cold Beverage

4-Cereals/Juice pitcher Bar  
58499-04



#### Butter

2-Cereals/Juice pitcher Bar  
58499-02



#### Tableware

Small tray  
58491-01



Insert for small tray  
58491-AA



Label holder  
58493-09



Napkin holder  
58495-01



Width 2 m — 78¾ in.

### Croissant / Muffin

Removable shelf GN 1/1  
58490-01

Stand GN 2/4  
58494-02

Stand GN 1/1  
58494-01



### Cakes

Stand  
58494Y08 / 58494Y09 / 58494Y10



### Breadsticks / Bread

Stand GN 2/1  
58494-06

Box with lid  
58497Y05



Height 0,30 m — 11¾ in.

### Accessories

#### Gres Tiles

Insert for stand GN 1/1 — GN 1/2 — GN 2/4

Decor A



Decor B



Decor C



Stand shelf GN 1/1  
58494-PC Decor A  
58494-PH Decor B  
58494-PM Decor C

Stand shelf GN 2/4  
58494-PD Decor A  
58494-PI Decor B  
58494-PN Decor C

#### Wood

Insert for stand GN 1/1 — GN 2/4

Stand shelf GN 1/1  
58494-AA



Stand shelf GN 2/4  
58494-AC



Tray GN 1/1  
58494-AB



# Opera

Seven elements in different shapes, textures and colors generate a catchy scenery giving life to a new buffet concept inspired by the seven musical notes. Alternating lines, flat surfaces, solids and voids, a series of components that, thanks to different heights, lend Opera modularity and the ability to create real architectures on the table. A symphony of geometrical sceneries where the GOLD DIAMOND and ROSE GOLD DIAMOND finishes add value to the solidity of the stainless-steel and to the delicateness of its design. This special processing technique gives the stainless-steel bright shades, and, at the same time, it naturally limits scratches, masks the wear and keeps the items unchanged and shiny over the time.

Sette elementi che, tra forme, texture e colore, compongono un palcoscenico d'effetto per dar vita a un nuovo modo di concepire il buffet, ispirato alle sette note musicali. Mediante l'alternanza di linee, piani, pieni e vuoti, i supporti - disponibili in differenti altezze - aprono Opera alla modularità e alla creazione di vere e proprie architetture in tavola. Una sinfonia di scenografiche geometrie in cui la solidità dell'acciaio inox e la leggerezza del suo design vengono valorizzate dall'esclusiva finitura Diamond, proposta in color ORO e ORO ROSA. Questo speciale processo conferisce al materiale vibranti accenti luminosi e, al contempo, inibisce naturalmente la formazione di graffi, cela gli inevitabili segni di usura e preserva gli oggetti brillanti e inalterati nel tempo.

design

buffet

# Opera

design

buffet



**Element A**  
Elemento A  
Element A  
Élément A  
Elemento A

**58900-1A** Diamond 18-10 S/S  
**58900G1A** Diamond PVD Gold  
**58900U1A** Diamond PVD Rose Gold  
43x43 cm h 43 cm  
16 7/8x16 7/8 in. h 16 7/8 in.



**Element B**  
Elemento B  
Element B  
Élément B  
Elemento B

**58900-1B** Diamond 18-10 S/S  
**58900G1B** Diamond PVD Gold  
**58900U1B** Diamond PVD Rose Gold  
39x39 cm h 34 cm  
15 3/8x15 3/8 in. h 13 3/8 in.



**Element C**  
Elemento C  
Element C  
Élément C  
Elemento C

**58900-1C** Diamond 18-10 S/S  
**58900G1C** Diamond PVD Gold  
**58900U1C** Diamond PVD Rose Gold  
35x35 cm h 25 cm  
13 7/8x13 7/8 in. h 9 7/8 in.



**Element D**  
Elemento D  
Element D  
Élément D  
Elemento D

**58900-1D** Diamond 18-10 S/S  
**58900G1D** Diamond PVD Gold  
**58900U1D** Diamond PVD Rose Gold  
31x31 cm h 16 cm  
12 1/4x12 1/4 in. h 6 1/4 in.



**Element E**  
Elemento E  
Element E  
Élément E  
Elemento E

**58900-1E** Diamond 18-10 S/S  
**58900G1E** Diamond PVD Gold  
**58900U1E** Diamond PVD Rose Gold  
21x21 cm h 21 cm  
8 1/4x8 1/4 in. h 8 1/4 in.



**Element F**  
Elemento F  
Element F  
Élément F  
Elemento F

**58900-1F** Diamond 18-10 S/S  
**58900G1F** Diamond PVD Gold  
**58900U1F** Diamond PVD Rose Gold  
21x21 cm h 39 cm  
8 1/4x8 1/4 in. h 15 3/8 in.



**Element G**  
Elemento G  
Element G  
Élément G  
Elemento G

**58900-1G** Diamond 18-10 S/S  
**58900G1G** Diamond PVD Gold  
**58900U1G** Diamond PVD Rose Gold  
39x21 cm h 21 cm  
15 3/8x8 1/4 in. h 8 1/4 in.





BUFFET OPERA SAMBONET IN ROSE GOLD DIAMOND FINISH.  
HOLLOWWARE MADAME & KYMA SAMBONET.  
BONE CHINA JADE ROSENTHAL.



BUFFET OPERA SAMBONET IN ROSE GOLD DIAMOND FINISH.





modern

buffet

## Atlantic Buffet System & Asia 2000

An evergreen that thanks to its shapes and contents represents the essence of the contemporary buffet. Characterized by simple and elegant design, it is versatile and perfect for every occasion and different styles of service. The wide range of articles and their complementarity with the Atlantic Buffet System collection make Asia 2000 stand out. Thanks to its stackable components and many other useful technical devices, ABS is functional and able to satisfy the food service needs of flexibility.

Un evergreen che, nella forma e nei contenuti, rappresenta l'essenza del buffet contemporaneo. La semplicità e la pulizia del suo design lo rendono versatile e perfetto per ogni tipo di occasione e per supportare i più diversi stili di servizio, anche i più esigenti. Asia 2000 si distingue per l'ampiezza degli articoli di cui è composto e per la complementarietà con la pratica linea Atlantic Buffet System che, sotto la stessa cifra stilistica, aggiunge impilabilità e altri utili accorgimenti tecnici. Soluzioni in grado di rendere estremamente funzionali i propri scaldavivande e di soddisfare i bisogni di flessibilità oggi richiesti della ristorazione d'eccellenza.

modern

buffet

# Buffet Selection

## PVD

→ **Customizations on demand.**  
For information contact  
our Customer Service.

Personalizzazioni su richiesta.  
Per maggiori informazioni contattare  
il nostro Servizio Clienti.

modern



### Chafing dish, round

BASE  
**57166-G4** PVD Gold - Handle not in PVD  
**57166-U4** PVD Rum - Handle not in PVD

Ø 24 cm · h 27 cm · 2 L  
Ø 9½ in. · H. 10½ in. · 0.5 Gal.

### LEGS

**57166GAA** PVD Gold  
**57166UAA** PVD Rum

**Solid alcohol or electric heating unit (EU or US) to be added based on client request.**  
I set per combustibile solido o alimentazione elettrica verranno aggiunti in base alla richiesta.



### Chafing dish, rectangular

BASE  
**57162-G4** PVD Gold - Handle not in PVD  
**57162-U4** PVD Rum - Handle not in PVD

57 x 47 cm · h 30,5 cm · 10 L  
22¼ x 18½ in. · H. 12¼ in. · 2.7 Gal.

### LEGS

**57162GAA** PVD Gold  
**57162UAA** PVD Rum

**Solid alcohol or electric heating unit (EU or US) to be added based on client request.**  
I set per combustibile solido o alimentazione elettrica verranno aggiunti in base alla richiesta.



### Cooled buffet showcase GN 1/1

**57466G60** PVD Gold - Handle not in PVD  
**57466U60** PVD Rum - Handle not in PVD

55 x 46 cm · h 18 cm  
21½ x 18½ in. · H. 7¼ in.

**Equipped with 4 eutectic pads, porcelain pan GN 1/1 H. 2¼ in. and cover.**  
Dotazione 4 contenitori eutettici, inserto porcellana GN 1/1 h 6,5 cm e coperchio.

buffet



### Juico dispenser

Distributore succhi  
Saftspender  
Distributeur à jus  
Dispensador de zumo

**57353G07** PVD Gold  
**57353U07** PVD Rum

Ø 18 cm · h 56 cm · 7 L - Ø 7 in. · H. 22 in. · 1.8 Gal.

**Equipped with 1 eutectic pad.**  
Dotazione 1 contenitore eutettico.



### Coffee dispenser

Scaldacaffè  
Kaffeenspender  
Réchaud à café  
Calentador de café

**Electric heating - European Standard**  
**57355EG6** PVD Gold  
**57355EU6** PVD Rum

**Electric heating - US Standard**  
**57355UG6** PVD Gold  
**57355UU6** PVD Rum

h 49 cm · 6 L - H. 19¼ in. · 1.6 Gal.



### Coffee dispenser

Scaldacaffè  
Kaffeenspender  
Réchaud à café  
Calentador de café

**Electric heating - European Standard**  
**57351EG6** PVD Gold  
**57351EU6** PVD Rum

**Electric heating - US Standard**  
**57351UG6** PVD Gold  
**57351UU6** PVD Rum

h 54 cm · 6 L - H. 21¼ in. · 1.6 Gal.



### Cooled yogurt dispenser

Porta yogurt refrigerato  
Joghurt-Kühlschale  
Rafratchissoir à yogourt  
Enfriador para yogurt

**57402G33** PVD Gold  
**57402U33** PVD Rum

Ø 33 cm - 13 in.

**Equipped with eutectic pads.**  
Provisto di contenitori eutettici.

modern

buffet



# Atlantic Buffet System

## Standing Units

	Solid alcohol heating Riscaldamento a combustibile solido Mit Brennpaste beheizt Chauffage combustible solide Calefacción con combustible sólido		Electric heating / Riscaldamento elettrico Elektrisch beheizt / Chauffage électrique Calefacción eléctrica	
	EUROPEAN STANDARD 250V - 360W		US STANDARD 120V - 450W	
<b>Chafing dish, rectangular*</b> 57 x 47 cm - h 30,5 cm - 10 L 22 7/8 x 18 1/2 in. - H. 12 1/8 in. - 2,6 Gal.	<b>58162A54</b> 18-10 S/S	<b>58162E54</b> 18-10 S/S	<b>58162U54</b> 18-10 S/S	
	<b>57162A54</b> Silverplated S/S	<b>57162E54</b> Silverplated S/S	<b>57162U54</b> Silverplated S/S	

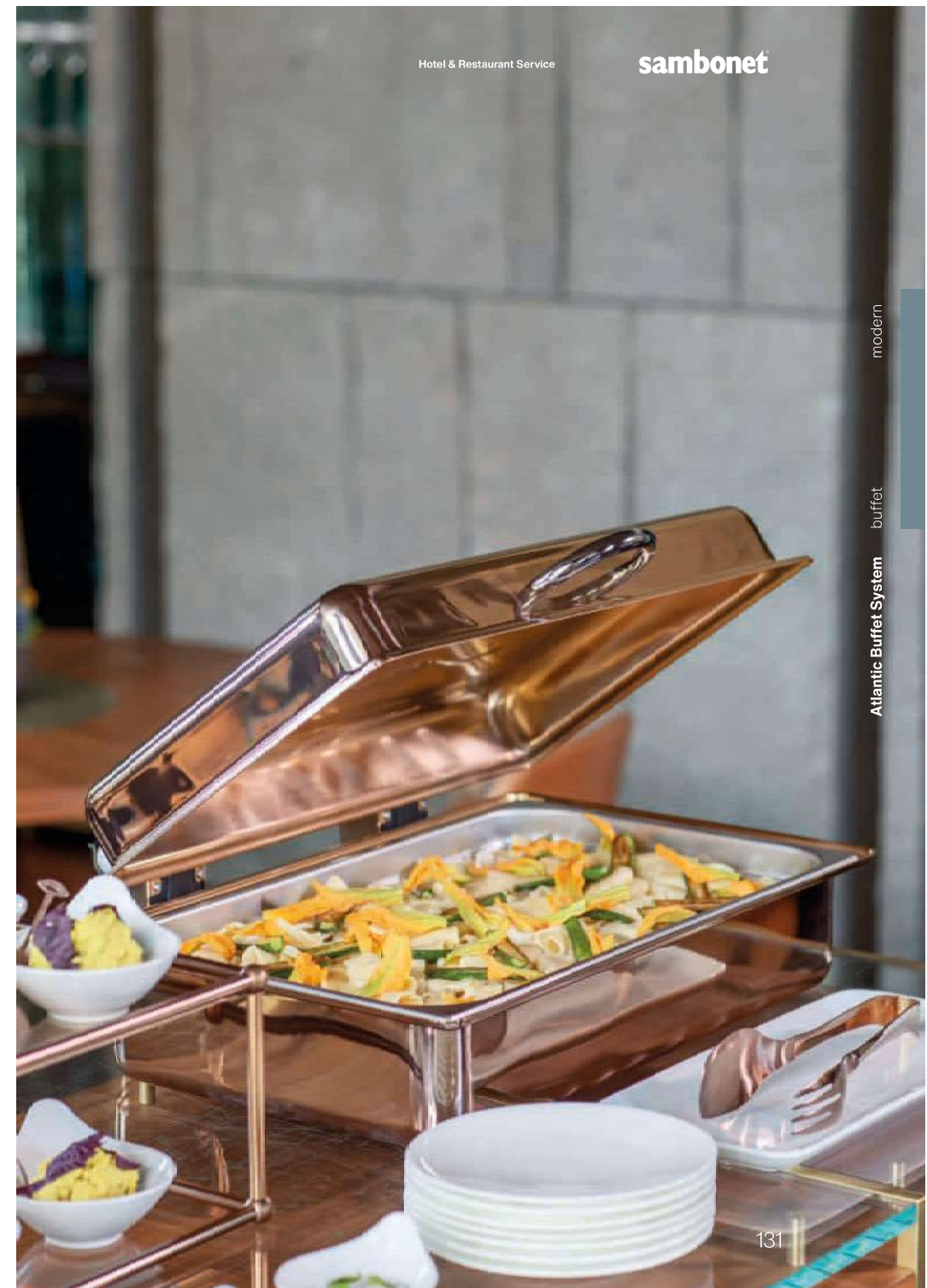


\* Available also in PVD GOLD and PVD RUM  
\* Disponibile anche in PVD Gold e PVD Rum

<b>Chafing dish, rectangular</b> 57 x 47 cm - h 30,5 cm - 10 L 22 7/8 x 18 1/2 in. - H. 12 1/8 in. - 2,6 Gal.	<b>58172A54</b> 18-10 S/S	<b>58172E54</b> 18-10 S/S	<b>58172U54</b> 18-10 S/S
---	---------------------------	---------------------------	---------------------------



Equipped with stainless steel food pan.  
Dotati di bacinella in acciaio inox.



# Atlantic Buffet System

Hotel & Restaurant Service

**sambonet**

## Built-in Units

**Solid alcohol heating**  
Riscaldamento a combustibile solido  
Mit Brennpaste beheizt  
Chauffage combustible solide  
Calefacción con combustible sólido

**Electric heating / Riscaldamento elettrico**  
Elektrisch beheizt / Chauffage électrique  
Calefacción eléctrica

**EUROPEAN STANDARD**  
250V - 360W

**US STANDARD**  
120V - 450W



**Chafing dish, rectangular**

57 x 47 cm - h 17,5 cm - 10 L  
22 7/16 x 18 1/2 in. - H. 6 7/8 in. - 2,6 Gal.

**58162A55** 18-10 S/S

**57162A55** Silverplated S/S

**58162E55** 18-10 S/S

**57162E55** Silverplated S/S

**58162U55** 18-10 S/S

**57162U55** Silverplated S/S



**Chafing dish, rectangular with glass**

57 x 47 cm - h 17,5 cm - 10 L  
22 7/16 x 18 1/2 in. - H. 6 7/8 in. - 2,6 Gal.

**58172A55** 18-10 S/S

**58172E55** 18-10 S/S

**58172U55** 18-10 S/S

**Equipped with stainless steel food pan GN 1/1.**  
Dotazione: bacinella GN 1/1 Inox.

## Top Units

**Chafing dish, round**



**-24 \***  
Ø 24 cm - h 27 cm - 4 L  
Ø 9 1/2 in. - H. 10 3/4 in. - 1,1 Gal.

**58166-24** 18-10 S/S  
**57166-24** Silverplated S/S

**58176-24** 18-10 S/S

**-30**  
Ø 30 cm - h 27 cm - 6 L  
Ø 11 in. - H. 10 3/4 in. - 1,6 Gal.

**58166-30** 18-10 S/S  
**57166-30** Silverplated S/S

**58176-30** 18-10 S/S  
**57176G30** PVD Gold\*  
**57176U30** PVD Rum\*  
**57176P30** PVD Champagne\*

**-36**  
Ø 36 cm - h 27 cm - 9 L  
Ø 14 in. - H. 10 3/4 in. - 2,4 Gal.

**58166-36** 18-10 S/S  
**57166-36** Silverplated S/S

**58176-36** 18-10 S/S  
**57176G36** PVD Gold\*  
**57176U36** PVD Rum\*  
**57176P36** PVD Champagne\*

**-40**  
Ø 40 cm - h 28 cm - 11,5 L  
Ø 15 3/4 in. - H. 11 in. - 3 Gal.

**58166-40** 18-10 S/S  
**57166-40** Silverplated S/S

**58176-40** 18-10 S/S  
**57176G40** PVD Gold\*  
**57176U40** PVD Rum\*  
**57176P40** PVD Champagne\*

**Equipped with stainless steel food pan.**

Dotati di bacinella inox.

\* Handle and base not in PVD

**Chafing dish, rectangular**

57 x 47 cm - h 17,5 cm - 10 L  
22 7/16 x 18 1/2 in. - H. 6 7/8 in. - 2,6 Gal.



**58162-54** 18-10 S/S

**57162-54** Silverplated S/S

**58172-54** 18-10 S/S

**57162-G4** PVD Gold - Handle not in PVD

**57162-U4** PVD Rum - Handle not in PVD

**Equipped with stainless steel food pan GN 1/1 height 6,5 cm.**  
Dotati di bacinella inox GN 1/1 altezza 6,5 cm.

modern

buffet

Atlantic Buffet System

modern

buffet

Atlantic Buffet System

# Atlantic Buffet System



## Induction

### Chafing dish, round



**-30**  
 Ø 30 cm · h 27 cm · 6 L  
 Ø 11 in. · H. 10 5/8 in. · 1,6 Gal.

**-36**  
 Ø 36 cm · h 27 cm · 9 L  
 Ø 14 in. · H. 10 5/8 in. · 2,4 Gal.

**-40**  
 Ø 40 cm · h 28 cm · 11,5 L  
 Ø 15 1/4 in. · H. 11 in. · 3 Gal.

**Lid**  
 Coperchio chiuso

**Glass lid**  
 Coperchio con inserto in vetro

**58166130** 18-10 S/S

**58176130** 18-10 S/S

**58166136** 18-10 S/S

**58176136** 18-10 S/S

**58166140** 18-10 S/S

**58176140** 18-10 S/S

modern

buffet



**Induction cooker**  
 Piastra a induzione  
 Induktionsplatte  
 Plaque à induction  
 Placa inducción



**58162-RA**  
 220-240 V - 500-2700 W - 50/60 Hz

30 x 37 cm - h 10 cm - 6 kg.  
 11 7/8 x 14 1/2 in. - H. 3 7/8 in. - 13 1/4 lbs.

**Induction cooker BUILT-IN**  
 Piastra a induzione da incasso  
 InduktionsplatteThekeinbau  
 Plaque à induction pour montage en comptoir  
 Placa inducción para empotrar



**58162-RB**  
 220-240 V - 500-3500 W - 50/60 Hz

36 x 38 cm - h 12,5 cm - 5,7 kg.  
 14 1/8 x 14 7/8 in. - H. 4 7/8 in. - 12 1/2 lbs.

Fast, accurate heating for finishing or holding - Free standing model ideal for buffet lines or off-site catering - Built-in model easy to install in all countertop surfaces - Heat setting power levels: 01-10 - Timer, cook top will shut-off after set time is completed - Range temperature from +60°C to +240°C.

Riscaldamento rapido ideale per ultimare cotture o mantenere cibi in caldo - Modello da appoggio ideale per buffet e catering all'aperto - Modello da incasso facile da installare in tutti i piani di appoggio - Selezione livelli di potenza: 01-10 - Timer, l'apparecchio si spegne automaticamente allo scadere del tempo impostato - Selezione temperatura da +60°C a +240°C

## Smooth movement and transparency

The lid is equipped with a transparent window made of unbreakable glass that lets you see the delicacies held in the chafing dishes. The gradual closing mechanism and the special lid removal method make the whole System even more effective.

Grazie alla trasparenza dell'obolo in vetro temperato, i coperchi offrono visibilità alla praticità dei contenuti degli scaldavivande. Il meccanismo di chiusura graduale e lo speciale metodo di rimozione dei coperchi rende ancora più performante l'intero Sistema.



modern

buffet

Atlantic Buffet System

# Atlantic Buffet System

Hotel & Restaurant Service

**sambonet**

**Cooled buffet showcase GN 1/1**  
Vetrina refrigerata GN 1/1  
Buffet-kühl-vitrine GN 1/1  
Vitrine réfrigérée GN 1/1  
Vitrina buffet refrigerada GN 1/1



**59466-60** 18-10 S/S  
**57466-60** Silverplated S/S

55 x 46 cm - h 18 cm  
21 1/4 x 18 1/8 in. - H. 7 1/8 in.

**Equipped with 4 eutectic pads, porcelain pan GN 1/1 Ht. 2 1/2 in., and cover.**  
Dotazione 4 contenitori eutettici, bacinella inox GN 1/1 h 6,5 cm e coperchio.

- **57466G60** PVD Gold - Handle not in PVD
- **57466U60** PVD Rum - Handle not in PVD



**59466-48** 18-10 S/S  
**57466-48** Silverplated S/S

55 x 46 cm - h 18 cm  
21 1/4 x 18 1/8 in. - H. 7 1/8 in.

**Equipped with 4 eutectic pads, stainless steel pan GN 1/1 Ht. 2 1/2 in., stainless steel tray GN 1/1 and cover.**  
Dotazione 4 contenitori eutettici, bacinella inox GN 1/1 h 6,5 cm, vassoio inox GN 1/1 e coperchio.



**58466-42** 18-10 S/S  
**57466-42** Silverplated S/S

55 x 46 cm - h 18 cm  
21 1/4 x 18 1/8 in. - H. 7 1/8 in.

**Equipped with 4 eutectic pads, stainless steel pan GN 1/1 Ht. 2 1/2 in., wooden cutting board and cover.**  
Dotazione 4 contenitori eutettici, bacinella inox GN 1/1 h 6,5 cm, tagliere legno e coperchio.



**59466-40** 18-10 S/S  
**57466-40** Silverplated S/S

55 x 46 cm - h 18 cm  
21 1/4 x 18 1/8 in. - H. 7 1/8 in.

**Equipped with 4 eutectic pads, stainless steel pan GN 1/1 Ht. 2 1/2 in., perforated stainless steel pan GN 1/1 and cover.**  
Dotazione 4 contenitori eutettici, bacinella inox GN 1/1 h 6,5 cm, teglia forata inox GN 1/1 e coperchio.



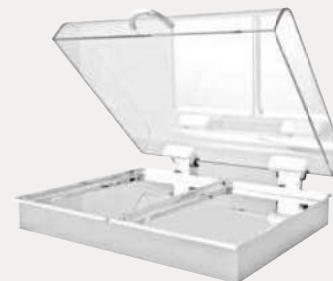
**Cooled buffet showcase GN 2/1**  
Vetrina refrigerata GN 2/1  
Buffet-kühl-vitrine GN 2/1  
Vitrine réfrigérée GN 2/1  
Vitrina buffet refrigerada GN 2/1

**58467-01** 18-10 S/S  
**57467-01** Silverplated S/S

65 x 53 cm - h 18 cm  
25 5/8 x 20 7/8 in. - H. 7 1/8 in.

**Equipped with 12 eutectic pads, stainless steel pan GN 2/1 Ht. 2 1/2 in., stainless steel tray GN 2/1 and cover.**  
Dotazione 12 contenitori eutettici, bacinella inox GN 2/1 h 6,5 cm, vassoio inox GN 2/1 e coperchio.

## Assembly solutions Esempi di composizione



modern

buffet

Asia 2000



**Juice dispenser**  
Distributore succhi  
Saftspender  
Distributeur à jus  
Dispensador de zumo

58353-07 18-10 S/S  
57353-07 Silverplated S/S

Ø 18 cm - h 56 cm - 7 L - Ø 7 in. - H. 22 in. - 1,8 Gal.

**Equipped with 1 eutectic pad**  
Dotazione 1 contenitore eutectico

\* Available also in PVD GOLD and PVD RUM  
\* Disponibile anche in PVD Gold e PVD Rum



**Soup tureen with cover and adapter**  
Zuppiera con coperchio e adattatore  
Suppenterrine mit Deckel und Einsatzring  
Petite marmite avec couvercle et adaptateur  
Olla baño-maria a sopa con tapa y anillo adaptador

58136-GA 18-10 S/S  
57136-GA Silverplated S/S

Ø 22 cm - h 16 cm - 4 L  
Ø 8 7/8 in. - H. 6 1/4 in. - 4 1/4 qts

\* Matching all round chafing dishes Ø 13 in.  
Adatta a tutti gli scaldavivande tondi Ø 33 cm



**Plates**  
Targhette  
Schilder  
Étiquettes  
Etiquetas

58341 18-10 S/S  
57341 Silverplated S/S

-EC Coffee  
-EW Water  
-EM Milk  
-ET Tea  
-EY Yogurt

11 x 13 cm - 4 1/4 x 5 in.



**Soup tureens with covers and adapter**  
Set 2 zuppieri con coperchi e adattatore  
2 Suppentöpfe mit Deckel und Einsatzplatte  
Ensemble 2 soupières avec couvercles et adaptateur  
2 ollas baño-maria a sopa con tapas y anillo adaptador

58132-GB 18-10 S/S  
57132-GB Silverplated S/S

Ø 22 cm - h 16 cm - 4 L  
Ø 8 7/8 in. - H. 6 1/4 in. - 4 1/4 qts

\* Matching all GN 1/1, rectangular chafing dishes  
Adatte a tutti gli scaldavivande rettangolari GN 1/1

Coffee & Tea

**Solid alcohol heating**  
Riscaldamento a combustibile solido  
Mit Brennpaste beheizt  
Chauffage combustible solide  
Calefacción con combustible sólido

**Electric heating / Riscaldamento elettrico**  
Elektrisch beheizt / Chauffage électrique  
Calefacción eléctrica

**EUROPEAN STANDARD**  
250V - 360W

**US STANDARD**  
120V - 450W



**Coffee dispenser**  
Scaldacaffè  
Kaffespender  
Réchaud à café  
Calentador de café

-06 \*  
h 54 cm - 6 L  
H. 21 1/4 in. - 1,6 Gal.

-09  
h 60 cm - 9 L  
H. 23 1/2 in. - 2,4 Gal.

-12  
h 68 cm - 12 L  
H. 26 3/4 in. - 3,2 Gal.

58351A06 18-10 S/S  
57351A06 Silverplated S/S

58351A09 18-10 S/S  
57351A09 Silverplated S/S

58351A12 18-10 S/S  
57351A12 Silverplated S/S

\* Available also in PVD GOLD and PVD RUM  
\* Disponibile anche in PVD Gold e PVD Rum



**Coffee dispenser**  
Scaldacaffè  
Kaffespender  
Réchaud à café  
Calentador de café

-06 \*  
h 49 cm - 6 L  
H. 19 1/4 in. - 1,6 Gal.

-09  
h 63 cm - 9 L  
H. 28 3/8 in. - 2,4 Gal.

-12  
h 72 cm - 12 L  
H. 24 3/4 in. - 3,2 Gal.

58355E06 18-10 S/S

58355E09 18-10 S/S

58355E12 18-10 S/S

**With thermoregulator / Dotazione termoregolatore**  
Adjustable temperature / Temperatura regolabile: 0+100° C

(58357-AE)  
European Standard

(58357-AU)  
US Standard

\* Available also in PVD GOLD and PVD RUM  
\* Disponibile anche in PVD Gold e PVD Rum



**Samovar**

-06  
\*\* h 51 cm - 6 L + 1 L \*  
\*\* H. 20 in. - 1,6 Gal.  
+ 0,3 Gal. \*

-09  
\*\* h 57 cm - 9 L + 1 L \*  
\*\* H. 22 1/2 in. - 2,4 Gal.  
+ 0,3 Gal. \*

-12  
\*\* h 65 cm - 12 L + 1,6 L \*  
\*\* H. 25 1/2 in. - 3,2 Gal.  
+ 0,4 Gal. \*

58357E06 18-10 S/S

58357E09 18-10 S/S

58357E12 18-10 S/S

58357U06 18-10 S/S

58357U09 18-10 S/S

58357U12 18-10 S/S

**With thermoregulator / Dotazione termoregolatore**  
Adjustable temperature / Temperatura regolabile: 0+100° C

(58357-AE)  
European Standard

(58357-AU)  
US Standard

(\*) Capacity / Capacità: tea/coffee pot - teiera/caffettiera  
(\*\*) Height without tea/coffee pot - Altezza senza teiera/caffettiera

modern

buffet

Asia 2000

Asia 2000



modern

buffet

Asia 2000



Restaurant Service

sambonet

modern

buffet

Asia 2000



**Cooled swivelling stand**  
Alzata girevole, refrigerata  
Büffetständer drehbar Kühlfbar  
Présentoir tournant, réfrigéré  
Expositor giratorio, refrigerado

- 58452-01 18-10 S/S
- 57452-01 Silverplated S/S
- 58452Z01 18-10 S/S
- 57452Z01 Silverplated S/S

Ø 50 cm - h 62 cm - Ø 19½ in. - H. 22½ in.

\* Equipped with 4 glass juice pitchers with stainless steel lids  
Dotazione 4 brocche vetro con coperchio inox



**Cooled swivelling stand with glass dispenser**  
Alzata girevole, refrigerata con portabicchieri  
Büffetständer drehbar, kühlbar mit Glashalterung  
Présentoir tournant, réfrigéré avec porte-verres  
Expositor giratorio refrigerado, con estante para vasos

- 58452-02 18-10 S/S
- 57452-02 Silverplated S/S
- 58452Z02 18-10 S/S
- 57452Z02 Silverplated S/S

Ø 50 cm - h 84 cm - Ø 19½ in. - H. 33 in.

\* Equipped with 4 glass juice pitchers with stainless steel lids  
Dotazione 4 brocche vetro con coperchio inox



**Swivelling stand**  
Alzata girevole  
Büffetständer drehbar  
Présentoir tournant  
Expositor giratorio

- 58454-02 18-10 S/S
- 57454-02 Silverplated S/S
- 58454Z02 18-10 S/S
- 57454Z02 Silverplated S/S

Ø 50 cm - h 70 cm - Ø 19½ in. - H. 27½ in.

\* Equipped with 3 glass bowls and polycarbonate hermetic lids  
Dotazione 3 ciotole vetro con coperchi ermetici in policarbonato



**Swivelling stand**  
Alzata girevole  
Büffetständer drehbar  
Présentoir tournant  
Expositor giratorio

- 58454-03 18-10 S/S
- 57454-03 Silverplated S/S
- 58454Z03 18-10 S/S
- 57454Z03 Silverplated S/S

Ø 50 cm - h 84 cm - Ø 19½ in. - H. 33 in.

\* Equipped with 6 glass bowls and polycarbonate hermetic lids  
Dotazione 3 ciotole vetro con coperchi ermetici in policarbonato



**Juice pitcher with lid**  
Brocca con coperchio  
Saftkrug mit Deckel  
Carafe avec couvercle  
Jarra con tapa

**58401-EO** 18-10 S/S  
**57401-EO** Silverplated S/S  
L 2 - 0.5 Gal.

**Juice pitcher without lid**  
Brocca senza coperchio  
Saftkanne ohne Deckel  
Carafe sans couvercle  
Jarra sin tapa

**58401-EM** Glass  
L 2 - 0.5 Gal.



**Lid for juice pitcher**  
Coperchio brocca  
Saftkrugdeckel  
Couvercle à carafe  
Tapa para jarra

**58401** 18-10 S/S  
**57401** Silverplated S/S

- EN NEUTRAL
- GA MILK
- GB ORANGE
- GC PINEAPPLE
- GD CARROT
- GE GRAPEFRUIT
- GF APPLE
- GG TOMATO
- GH MULTIVITAMIN



**Airtight cover**  
Coperchio ermetico  
Frischhaltedeckel  
Couvercle hermétique  
Tapa hermética

**41400-AB** Plexiglas  
Ø 23,5 cm - Ø 9¼ in.



**Cover**  
Coperchio  
Deckel  
Couvercle  
Tapa

**42453-23** Polycarbonate  
Ø 23 cm - Ø 9½ in.



**Bowl**  
Ciotola  
Schale  
Bol  
Copa

**41400-AA** Glass  
Ø 23 cm - Ø 9½ in.



**Cooled yogurt dispenser**  
Porta yogurt refrigerato  
Joghurt-Kühlschale  
Rafrachissoir à yogourt  
Enfriador para yogurt

**58402** 18-10 S/S  
**57402** Silverplated S/S

- 33 Ø 33 cm - 13 in. - n° 3 art. 58333-VA
- 40 Ø 40 cm - 15¾ in. - n° 4 art. 58333-VA

**57402G33** PVD Gold  
**57402U33** PVD Rum

**Equipped with eutectic pads.**  
Provvisto di contenitori eutettici.



**Buffet swivelling stand, 3 tiers**  
Alzata girevole, 3 piani  
Büffetständer, 3-stufig, drehbar  
Présentoir tournant, 3 étages  
Expositor giratorio, 3 niveles

**58453-03** 18-10 S/S  
**57453-03** Silverplated S/S  
Ø 50 / 39 / 21 cm - h 84 cm  
Ø 19½ / 15¼ / 8½ in. - H. 33 in.



**Cooled bowl**  
Ciotola refrigerata  
Kühlschale  
Bol réfrigérées  
Bol refrigerada

**58354-03** 18-10 S/S  
**57354-03** Silverplated S/S

- Ø 18 cm - h 21,5 cm - 2,7 L
- Ø 7 in. - H. 8½ in. - 0,7 Gal.

**Equipped with eutectic pad.**  
Provisto di 1 contenitore eutettico.



classic

buffet

## Asia

Sambonet's savoir faire, elegance and silver shades at the service of the classical buffet. Classic and timeless America and Asia bring together quality, know-how and the company style gaining in over 150 years of experience and give a wide range of articles to organize every kind of service. Handles and pommels delicately decorated renew the classical style, keeping a simple and extremely refined taste. Functional and extremely flexible freestanding accessories are accompanied by an exclusive selection of build-in pieces.

L'eleganza, il savoir faire Sambonet e i riflessi dell'argento al servizio del buffet classico. Intramontabile e senza tempo America e Asia riuniscono la qualità, l'esperienza e lo stile maturato in oltre 150 anni dell'azienda in una ampia gamma di articoli per organizzare ogni tipo di rinfresco. Grazie alla ricercatezza di alcuni dettagli decorativi, finemente integrati in impugnature, maniglie e pomoli, questo sistema buffet rivitalizza lo stile classico, mantenendo un gusto sobrio ed estremamente raffinato. Ai funzionali ed estremamente flessibili accessori freestanding è affiancata anche una esclusiva selezione di articoli da incasso.

classic

buffet

# Asia

Stainless steel AISI 304 (EN X5CrNi18-10) construction. Mirror polish finishing. Revolving top cover adjustable up to 180°. Equipped with 1 food pan GN 1/1 - h 21/2 in. - 2.5 Gal. Metal parts silverplating average thickness 10 micron.

Struttura in acciaio inossidabile AISI 304 (EN X5CrNi18-10). Finitura lucida a specchio. Cioche ad apertura a scomparsa a 180°. Provvisto di 1 portavivande GN 1/1 - h 6,5 cm. - 10 L. Spessore medio dell'argentatura sulle parti metalliche 10 micron.

## Standing units



**Asia**  
Chafing dish, rectangular GN 1/1  
67,5 x 44 cm - h 42 cm - 18,3 kg, c.ca  
26½ x 17½ in. - H. 16½ in. - 40,7 lbs. approx.

	Solid alcohol heating / Riscaldamento a combustibile solido / Mit Brennpaste beheizt / Chauffage combustible solide / Calefacción con combustible sólido		Electric heating / Riscaldamento elettrico / Elektrisch beheizt / Chauffage électrique / Calefacción eléctrica	
	EUROPEAN STANDARD 250V - 360W	US STANDARD 120V - 450W	EUROPEAN STANDARD 250V - 360W	US STANDARD 120V - 450W
	<b>58132A54</b> 18-10 S/S <b>57132A54</b> Silverplated S/S	<b>58132U54</b> 18-10 S/S <b>57132U54</b> Silverplated S/S	<b>58132E54</b> 18-10 S/S <b>57132E54</b> Silverplated S/S	<b>58132U54</b> 18-10 S/S <b>57132U54</b> Silverplated S/S
<b>Equipped with stainless steel food pan GN 1/1 height 10 cm # 14102-10</b> Dotazione bacinella inox GN 1/1 altezza 10 cm # 14102-10				



**Asia**  
Chafing dish, round

**Ø 33**  
Ø 33 cm - h 44 cm  
3,5 L - 13 kg  
Ø 13 in. - h 17¼ in.  
0,9 Gal. - 28,90 lbs

	<b>58136A33</b> 18-10 S/S <b>57136A33</b> Silverplated S/S	<b>58136E33</b> 18-10 S/S <b>57136E33</b> Silverplated S/S	<b>58136U33</b> 18-10 S/S <b>57136U33</b> Silverplated S/S
<b>Equipped with stainless steel food pan Ø 33 # 58136-EA</b> Dotazione bacinella inox Ø 33 # 58136-EA			
	<b>58136A40</b> 18-10 S/S <b>57136A40</b> Silverplated S/S	<b>58136E40</b> 18-10 S/S <b>57136E40</b> Silverplated S/S	<b>58136U40</b> 18-10 S/S <b>57136U40</b> Silverplated S/S
<b>Equipped with stainless steel food pan Ø 40 # 58136-EB</b> Dotazione bacinella inox Ø 40 # 58136-EB			

**Ø 40**  
Ø 40 cm - h 58 cm  
6 L - 16,7 kg.  
Ø 15¾ in. - H. 22¾ in.  
1,6 Gal. - 27,10 lbs

Hotel & Restaurant Service

**sambonet**

For counter sinking. Sinking height 53/4 in. Stainless steel AISI 304 (EN X5CrNi18-10) construction. Mirror polish finishing. Revolving top cover adjustable up to 180°. Equipped with 1 food pan GN 1/1 - h 21/2 in. - 2.5 Gal. Metal parts silverplating average thickness 10 micron.

Da incasso, profondità cm. 14,5. Struttura in acciaio inossidabile AISI 304 (EN X5CrNi18-10). Finitura lucida a specchio. Cioche ad apertura a scomparsa a 180°. Scaldavivande provvisto di 1 portavivande GN 1/1 h 6,5 cm. - L 10. Spessore medio dell'argentatura sulle parti metalliche 10 micron.

## Built-in units



**Asia**  
Chafing dish, rectangular gn 1/1  
67,2 x 44 cm - h. 34,5 cm - 12,2 kg, c.ca  
26½ x 17½ in. - h 13¾ in. - 27,10 lbs. approx.

	Solid alcohol heating / Riscaldamento a combustibile solido / Mit Brennpaste beheizt / Chauffage combustible solide / Calefacción con combustible sólido		Electric heating / Riscaldamento elettrico / Elektrisch beheizt / Chauffage électrique / Calefacción eléctrica	
	EUROPEAN STANDARD 250V - 360W	US STANDARD 120V - 450W	EUROPEAN STANDARD 250V - 360W	US STANDARD 120V - 450W
	<b>58132A55</b> 18-10 S/S <b>57132A55</b> Silverplated S/S	<b>58132E55</b> 18-10 S/S <b>57132E55</b> Silverplated S/S	<b>58132U55</b> 18-10 S/S <b>57132U55</b> Silverplated S/S	<b>58132U55</b> 18-10 S/S <b>57132U55</b> Silverplated S/S
<b>Equipped with stainless steel food pan GN 1/1 height 10 cm # 14102-10</b> Dotazione bacinella inox GN 1/1 altezza 10 cm # 14102-10				



**Asia**  
Chafing dish, round

**Ø 33**  
Ø 33 cm - h 34,5 cm  
3,5 L - 7,1 kg  
Ø 13 in. - H. 13¾ in.  
0,9 Gal. - 15,80 lbs

	<b>58136A34</b> 18-10 S/S <b>57136A34</b> Silverplated S/S	<b>58136E34</b> 18-10 S/S <b>57136E34</b> Silverplated S/S	<b>58136U34</b> 18-10 S/S <b>57136U34</b> Silverplated S/S
<b>Equipped with stainless steel food pan Ø 33 # 58136-EA</b> Dotazione bacinella inox Ø 33 # 58136-EA			
	<b>58136A41</b> 18-10 S/S <b>57136A41</b> Silverplated S/S	<b>58136E41</b> 18-10 S/S <b>57136E41</b> Silverplated S/S	<b>58136U41</b> 18-10 S/S <b>57136U41</b> Silverplated S/S
<b>Equipped with stainless steel food pan Ø 40 # 58136-EB</b> Dotazione bacinella inox Ø 40 # 58136-EB			

**Ø 40**  
Ø 40 cm - h 43 cm  
6 L - 10,2 kg.  
Ø 15¾ in. - H. 17 in.  
1,6 Gal. - 22,70 lbs



Dispensers

**Coffee dispenser**  
 Scaldacaffè  
 Kaffeespender  
 Réchaud à café  
 Calentador de café



**-06**  
 h 56 cm - 6 L  
 H. 22 in. - 1.6 Gal.

**-09**  
 h 62 cm - 9 L  
 H. 24 1/2 in. - 2,4 Gal.

**-12**  
 h 69 cm - 12 L  
 H. 27 1/4 in. - 3,2 Gal.

	<b>Solid alcohol heating</b> Riscaldamento a combustibile solido Mit Brennpaste beheizt Chauffage combustible solide Calefacción con combustible sólido	<b>Electric heating / Riscaldamento elettrico</b> Elektrisch beheizt / Chauffage électrique Calefacción eléctrica	<b>EUROPEAN STANDARD</b> 250V - 360W	<b>US STANDARD</b> 120V - 450W	
<b>57331A06</b>	Silverplated S/S	<b>57331E06</b>	Silverplated S/S	<b>57331U06</b>	Silverplated S/S
<b>57331A09</b>	Silverplated S/S	<b>57331E09</b>	Silverplated S/S	<b>57331U09</b>	Silverplated S/S
<b>57331A12</b>	Silverplated S/S	<b>57331E12</b>	Silverplated S/S	<b>57331U12</b>	Silverplated S/S

**Juice dispenser**  
 Distributore succhi  
 Saftspender  
 Distributeur à jus  
 Dispensador de zumo



Ø 18 cm  
 h 58 cm 7 L  
 Ø 7 in.  
 H. 22 3/4 in. 1,8 Gal.

<b>58333-07</b>	18-10 S/S	-	-
<b>57333-07</b>	Silverplated S/S	-	-

Equipped with 1 eutectic pad # 58333-VA  
 Dotati di 1 contenitore eutettico # 58333-VA

Hotel & Restaurant Service

sambonet



**Plates**  
 Targhette  
 Schilder  
 Étiquettes  
 Etiquetas

**58341** 18-10 S/S  
**57331** Silverplated S/S

**-EC** Coffee  
**-EW** water  
**-EM** Milk  
**-ET** Tea  
**-EY** Yogurt

11 x 13 cm - 4 1/4 x 5 in.

CLASSIC

buffet

Asia

classic

buffet

Asia



**Cooled swivelling stand with glass dispenser**  
Alzata girevole, refrigerata con portabicchieri  
Büffetständer drehbar, kühlbar mit Glashalterung  
Présentoir tournant, réfrigéré avec porte-verres  
Expositor giratorio refrigerado, con estante para vasos

**57432-02** Silverplated S/S  
**\* 57432Z02** Silverplated S/S

Ø 50 cm h 82 cm - Ø 19½ in. H. 32¼ in.

**\*Equipped with 4 glass juice pitchers with stainless steel lids**  
Dotazione 4 brocche vetro con coperchi inox



**Cooled swivelling stand**  
Alzata girevole, refrigerata  
Büffetständer drehbar, kühlbar  
Présentoir tournant, réfrigéré  
Expositor giratorio, refrigerado

**57432-01** Silverplated S/S  
**\* 57432Z01** Silverplated S/S

Ø 50 cm h 58 cm - Ø 19½ in. H. 22¾ in.

**\*Equipped with 4 glass juice pitchers with stainless steel lids**  
Dotazione 4 brocche vetro con coperchi inox



**Swivelling stand**  
Alzata girevole  
Büffetständer drehbar  
Présentoir tournant  
Expositor giratorio

**57434-02** Silverplated S/S  
**\* 57434Z02** Silverplated S/S

Ø 50 cm h 78 cm - Ø 19½ in. H. 30¾ in.

**\* Equipped with 3 glass bowls and polycarbonate hermetic lids**  
Dotazione 3 ciotole vetro con coperchi ermetici in policarbonato



**Swivelling stand**  
Alzata girevole  
Büffetständer drehbar  
Présentoir tournant  
Expositor giratorio

**57434-03** Silverplated S/S  
**\* 57434Z03** Silverplated S/S

Ø 50 cm h 93 cm - Ø 19½ in. H. 36¾ in.

**\* Equipped with 6 glass bowls and polycarbonate hermetic lids**  
Dotazione 3 ciotole vetro con coperchi ermetici in policarbonato



**Juice pitcher with lid**  
Brocca con coperchio  
SafTKanne mit Deckel  
Carafe avec couvercle  
Jarra con tapa

**58401-EO** 18-10 S/S  
**57401-EO** Silverplated S/S

L 2 - 0,5 Gal.

**Juice pitcher without lid**  
Brocca senza coperchio  
SafTKanne ohne Deckel  
Carafe sans couvercle  
Jarra sin tapa

**58401-EM** Glass / vetro

L 2 - 0,5 gal.



**Lid for juice pitcher**  
Coperchio brocca  
SafTKannendeckel  
Couvercle à carafe  
Tapa para jarra

**58401** 18-10 S/S  
**57401** Silverplated S/S

-EN NEUTRAL -GF APPLE  
-GA MILK -GG TOMATO  
-GB ORANGE -GH MULTIVITAMIN  
-GC PINEAPPLE  
-GD CARROT  
-GE GRAPEFRUIT

Asia



classic

Asia buffet



**Buffet swivelling stand , 3 tiers**  
Alzata girevole , 3 piani  
Büffetständer, 3-stufig , drehbar  
Présentoir tournant, 3 étages  
Expositor giratorio, 3 niveles

**58453-03** 18-10 S/S  
**57433-03** Silverplated S/S

Ø 50 / 39 / 21 cm h 85 cm  
Ø 19½ / 15¼ / 8½ in. - H. 33½ in.



**Swivelling stand**  
Alzata girevole frutti di mare  
Austernständer, drehbar  
Plat à huîtres tournant  
Fuente giratoria para mariscos

**58431-00** 18-10 S/S  
**57431-00** Silverplated S/S

**Asia swivelling oyster stand with grid**  
Alzata girevole frutti di mare  
Austernständer, drehbar  
Plat à huîtres tournant  
Fuente giratoria para mariscos

**58431Z00** 18-10 S/S  
**57431Z00** Silverplated S/S

Ø 50 cm h 20 cm  
Ø 19½ in. - H. 7¾ in.



**Cooled yogurt dispenser**  
Porta yogurt refrigerato  
Joghurt-Kühlschale  
Rafraichissoir à yogourt  
Enfriador para yogurt

**58402** 18-10 S/S  
**57402** Silverplated S/S

-33 Ø 33 cm - 13 in. - n° 3 art. 58333-VA  
-40 Ø 40 cm - 15¼ in. - n° 4 art. 58333-VA

**57402G33** PVD Gold  
**57402U33** PVD Rum

**Equipped with eutectic pads.**  
Provisto di contenitori eutettici.

Hotel & Restaurant Service

sambonet



**Airtight cover**  
Coperchio ermetico  
Frischhaltedeckel  
Couvercle hermétique  
Tapa hermética

**41400-AB** Plexiglas  
Ø 23,5 cm - Ø 9¼ in.



**Cover**  
Coperchio  
Deckel  
Couvercle  
Tapa

**42453-23** Polycarbonate  
Ø 23 cm - Ø 9½ in.



**Bowl**  
Ciotola  
Schale  
Bol  
Copa

**41400-AA** Glass  
Ø 23 cm - Ø 9½ in.

## Asia Showcases



**Cooled buffet showcase**  
Vitrina refrigerata  
Büffet-kühl-vitrine  
Vitrine réfrigérée  
Vitrina buffet refrigerada

**58436-60** 18-10 S/S  
**57436-60** Silverplated S/S

56,5 x 35,5 cm - h 35 cm  
22¼ x 14 in. - H. 13¾ in.

**Equipped with eutectic pads,**  
**porcelain dish GN 1/1 H. 2¼ in. and roll-top cover.**  
Dotata di contenitori eutettici,  
porcellana GN 1/1 altezza 6,5 cm e coperchio roll-top.



classic

buffet

Asia

# Asia Showcases

**Cooled buffet showcase**  
Vetrina refrigerata  
Buffet-kühl-vitrine  
Vitrine réfrigérée  
Vitrina buffet refrigerada



**58435-48** 18-10 S/S  
**57435-48** Silverplated S/S

56,5 x 35,5 cm - h 35 cm  
22¼ x 14 in. - H. 13¾ in.

Equipped with 4 eutectic pads, stainless steel food pan GN 1/1 H, 2½ in., stainless steel tray GN 1/1 and roll-top cover.  
Dotazione 4 contenitori eutettici, bacinella inox GN 1/1 h 6,5 cm, vassoio inox GN 1/1 e coperchio roll-top.



**58435-40** 18-10 S/S  
**57435-40** Silverplated S/S

56,5 x 35,5 cm - h 35 cm  
22¼ x 14 in. - H. 13¾ in.

Equipped with 4 eutectic pads, stainless steel food pan GN 1/1 H, 2½ in., perforated tray GN 1/1 and roll-top cover.  
Dotazione 4 contenitori eutettici, bacinella inox GN 1/1 h 6,5 cm, vassoio forato inox GN 1/1 e coperchio roll-top.



**58435-42** 18-10 S/S  
**57435-42** Silverplated S/S

56,5 x 35,5 cm - h 35 cm  
22¼ x 14 in. - h 13¾ in.

Equipped with 4 eutectic pads, stainless steel food pan GN 1/1 H, 2½ in., wooden cutting board and roll-top cover.  
Dotazione 4 contenitori eutettici, bacinella inox GN 1/1 h 6,5 cm, tagliere legno e coperchio roll-top.



**58435-00** 18-10 S/S  
**57435-00** Silverplated S/S

56,5 x 35,5 cm - h 15 cm  
22¼ x 14 in. - h 6 in.

Equipped with 4 eutectic pads, stainless steel food pan GN 1/1 H, 2½ in., and perforated tray GN 1/1.  
Dotazione 4 contenitori eutettici, bacinella inox GN 1/1 h 6,5 cm, vassoio forato inox GN 1/1.

# Showcase Accessories Asia & ABS

Hotel & Restaurant Service

**sambonet**

	<b>Asia / Europa roll top cover</b> Coperchio roll-top Rolltop Deckel Couvercle roll-top Tapa roll-top	<b>58435-BA</b> PMMA 56,5 x 35,5 cm - h 20 cm 22¼ x 14 in. - H. 7¾ in.
	<b>Atlantic cover</b> Coperchio Deckel Couvercle Tapa	<b>58466-CA</b> GN 1/1 PMMA <b>58467-CA</b> GN 2/1 PMMA
	<b>Container GN 1/1</b> Vasca GN 1/1 GN-Behälter 1/1 Bac GN 1/1 Baño-maria GN 1/1	<b>14302-06</b> 18-10 S/S 53 x 32,5 cm - h 6,5 cm 20¾ x 12¾ in. - H. 2½ in.
	<b>Perforated tray GN 1/1</b> Bacinella forata GN 1/1 GN 1/1-Behälter perforiert Bac GN 1/1, perforée Baño-maria GN 1/1, perforada	<b>14202-02</b> 18-10 S/S 53 x 32,5 cm - h 2 cm 20¾ x 12¾ in. - H. 0,7 in.
	<b>Cutting board</b> Tagliere Tranchierbrett Planche à découper Plancha para cortar	<b>58435-AB</b> PVC 51 x 30,5 cm - h. 2 cm 20 x 12 in. - H. 0,7 in.
	<b>Cutting board</b> Tagliere Tranchierbrett Planche à découper Plancha para cortar	<b>58435-AA</b> Beech wood 51 x 30,5 cm - h 2 cm 20 x 12 in. - H. 0,7 in.
	<b>Tray GN 1/1</b> Vassoio GN 1/1, inox GN-Tablett 1/1, Edelstahl Rostfrei Plateau GN 1/1, inox Bandeja GN 1/1, acero inox	<b>14302-02</b> 18-10 S/S 53 x 32,5 cm - h 2 cm 20¾ x 12¾ in. - H. 0,7 in.
	<b>Tray for glass bowls 23 cm</b> Vassoio con 2 fori per ciotole vetro 23 cm Geflochte Ausstellplatte für 2 Glasschalen, 23 cm Plaque avec 2 trous pour bols en verre 23 cm Bandeja perforada para 2 vidrios, 23 cm	<b>58467-BA</b> 18-10 S/S 53 x 32,5 cm - h 2 cm 20¾ x 12¾ in. - H. 0,7 in.
	<b>Container GN 1/1</b> Vasca GN 1/1 GN-Behälter 1/1 Bac GN 1/1 Baño-maria GN 1/1	<b>44332-06</b> Porcelain 53 x 32,5 cm - h 6,5 cm 20¾ x 12¾ in. - H. 2½ in.
	<b>Asia showcase base</b> Base per vetrina Vitrine-Gestell Base pour vitrine Base para vitrina	<b>58435-38</b> 18-10 S/S 56,5 x 35,5 cm - h 15 cm 22¼ x 14 in. - H. 6 in.
	<b>Bowl</b> Ciotola Schale Bol Copa	<b>41400-AA</b> Glass
	<b>Cover</b> Coperchio Deckel Couvercle Tapa	<b>41400-AB</b> Plexiglas Ø 23,5 cm - Ø 9½ in. <b>42453-23</b> Polycarbonate Ø 23 cm - Ø 9½ in.
	<b>Eutectic pad</b> Contenitore eutettico Kühlakku Cartouche eutectique Placa eutética	<b>58333-VA</b> <b>58879-55</b> 44 cl. - 47 qts.    16,5 x 13,5 cm - h 3 cm 6½ x 5¼ in. - H. 1½ in.
	<b>Adapter bar GN 2/1</b> Separatore GN 1/1 GN-Stege 2/1 Barrette de composition GN 2/1 Barra adaptadora GN 2/1	<b>14409-02</b> 18-10 S/S 53 cm - 20¾ in.

classic

buffet

Asia Showcase

classic

buffet

Showcase Accessories

# Accessories & Components

## Asia & Atlantic Buffet System (ABS) Rectangular



Asia rectangular GN 1/1



ABS rectangular Closure on long side



ABS rectangular with glass Closure on long side

Hotel & Restaurant Service

sambonet

Porcelain - Porcellana - Porzellan - Porcelaine - Porcelana

	<b>Food pan GN 1/1</b> - Bacinella GN 1/1 - GN-Behälter 1/1 Bac GN 1/1 - Baño-maria GN 1/1 <b>44332-06</b> 53 x 32,5 cm h 6,5 cm 10 L 20 <sup>3</sup> / <sub>4</sub> x 12 <sup>3</sup> / <sub>4</sub> in. H. 2 <sup>1</sup> / <sub>2</sub> in. 2,6 Gal.	X
	<b>Food pan GN 2/3</b> - Bacinella GN 2/3 - GN-Behälter 2/3 Bac GN 2/3 - Baño-maria GN 2/3 <b>44333-06</b> 35,3 x 32,5 cm h 6,5 cm 6 L 13 <sup>3</sup> / <sub>4</sub> x 12 <sup>3</sup> / <sub>4</sub> in. H. 2 <sup>1</sup> / <sub>2</sub> in. 1,6 Gal.	X
	<b>Food pan GN 1/2</b> - Bacinella GN 1/2 - GN-Behälter 1/2 Bac GN 1/2 - Baño-maria GN 1/2 <b>44335-06</b> 32,5 x 26,5 cm h 6,5 cm 4 L 12 <sup>3</sup> / <sub>4</sub> x 10 <sup>3</sup> / <sub>4</sub> in. H. 2 <sup>1</sup> / <sub>2</sub> in. 1 Gal.	X
	<b>Food pan GN 1/3</b> - Bacinella GN 1/3 - GN-Behälter 1/3 Bac GN 1/3 - Baño-maria GN 1/3 <b>44337-06</b> 32,5 x 17,5 cm h 6,5 cm 3 L 12 <sup>3</sup> / <sub>4</sub> x 6 <sup>3</sup> / <sub>4</sub> in. H. 2 <sup>1</sup> / <sub>2</sub> in. 0,8 Gal.	X

X	X
X	X
X	X
X	X

Stainless Steel - Acciaio Inox - Edelstahl Rostfrei - Acier Inoxidable - Acero Inox

	<b>Food pan GN 1/1</b> - Bacinella GN 1/1 - GN-Behälter 1/1 Bac GN 1/1 - Baño-maria GN 1/1 <b>14102-04</b> 53 x 32,5 cm h 4 cm 7 L - 20 <sup>3</sup> / <sub>4</sub> x 12 <sup>3</sup> / <sub>4</sub> in. H. 1 <sup>1</sup> / <sub>2</sub> in. 1,8 Gal.	X
	<b>14102-06</b> 53 x 32,5 cm h 6,5 cm 10 L - 20 <sup>3</sup> / <sub>4</sub> x 12 <sup>3</sup> / <sub>4</sub> in. H. 2 <sup>1</sup> / <sub>2</sub> in. 2,6 Gal.	X
	<b>14102-10</b> 53 x 32,5 cm h 10 cm 15 L - 20 <sup>3</sup> / <sub>4</sub> x 12 <sup>3</sup> / <sub>4</sub> in. H. 4 <sup>1</sup> / <sub>2</sub> in. 4 Gal.	X
	<b>Food pan GN 2/3</b> - Bacinella GN 2/3 - GN-Behälter 2/3 Bac GN 2/3 - Baño-maria GN 2/3 <b>14103-06</b> 35,3 x 32,5 cm h 6,5 cm 6 L - 13 <sup>3</sup> / <sub>4</sub> x 12 <sup>3</sup> / <sub>4</sub> in. H. 2 <sup>1</sup> / <sub>2</sub> in. 1,6 Gal.	X
	<b>14103-10</b> 35,3 x 32,5 cm h 10 cm 9 L - 13 <sup>3</sup> / <sub>4</sub> x 12 <sup>3</sup> / <sub>4</sub> in. H. 4 <sup>1</sup> / <sub>2</sub> in. 2,4 Gal.	X
	<b>Food pan GN 1/2</b> - Bacinella GN 1/2 - GN-Behälter 1/2 Bac GN 1/2 - Baño-maria GN 1/2 <b>14105-06</b> 32,5 x 26,5 cm h 6,5 cm 4 L - 12 <sup>3</sup> / <sub>4</sub> x 10 <sup>3</sup> / <sub>4</sub> in. H. 2 <sup>1</sup> / <sub>2</sub> in. 1 Gal.	X
	<b>14105-10</b> 32,5 x 26,5 cm h 10 cm 6 L - 12 <sup>3</sup> / <sub>4</sub> x 10 <sup>3</sup> / <sub>4</sub> in. H. 4 <sup>1</sup> / <sub>2</sub> in. 1,6 Gal.	X
	<b>Food pan GN 1/3</b> - Bacinella GN 1/3 - GN-Behälter 1/3 - Bac GN 1/3 Baño-maria GN 1/3 <b>14107-06</b> 32,5 x 17,5 cm h 6,5 cm 3 L - 12 <sup>3</sup> / <sub>4</sub> x 6 <sup>3</sup> / <sub>4</sub> in. H. 2 <sup>1</sup> / <sub>2</sub> in. 0,8 Gal.	X
	<b>14107-10</b> 32,5 x 17,5 cm h 10 cm 4 L - 12 <sup>3</sup> / <sub>4</sub> x 6 <sup>3</sup> / <sub>4</sub> in. H. 4 <sup>1</sup> / <sub>2</sub> in. 1 Gal.	X
	<b>Food pan GN 1/4</b> - Bacinella GN 1/4 - GN-Behälter 1/4 Bac GN 1/4 - Baño-maria GN 1/4 <b>14108-06</b> 26,5 x 16,2 cm h 6,5 cm 2 L - 10 <sup>3</sup> / <sub>4</sub> x 6 <sup>3</sup> / <sub>4</sub> in. H. 2 <sup>1</sup> / <sub>2</sub> in. 0,5 Gal.	X
	<b>Adapter bar gn 1/1</b> - Separatore GN 1/1 - GN-Behälter 1/4 Bac GN 1/4 - Baño-maria GN 1/4 <b>14409-01</b> 32,2 cm • 12 <sup>3</sup> / <sub>4</sub> in.	X

X	X
X	X
X	X
X	X
X	X
X	X
X	X
X	X
X	X
X	X

# Accessories & Components

## Asia & Atlantic Buffet Sytem (ABS) Rectangular



Asia  
rectangular GN 1/1



ABS rectangular  
Closure on long side

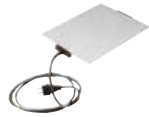


ABS rectangular with glass  
Closure on long side

Hotel & Restaurant Service

sambonet

### Electric heating Units - Piastra elettriche - Elektro-Heizelemente - Corps de chauffe electriques - Calentadores eléctricos



**58162-KE EUROPEAN STANDARD 220V 380W**  
20 x 25 cm - 7 3/4 x 9 3/4 in.

**58162-KU US STANDARD 110V 450W**  
20 x 25 cm - 7 3/4 x 9 3/4 in.

**58132-KE EUROPEAN STANDARD 220V 380W**  
20 x 25 cm - 7 3/4 x 9 3/4 in.

**58132-KU US STANDARD 110V 450W**  
20 x 25 cm - 7 3/4 x 9 3/4 in.

x

x

x

x

x

x

x

x

x

x

### Thermoregulator - Termoregolatore - Thermoregler - Thermorégulateur - Termorregulador



**58132-AE EUROPEAN STANDARD**

**58132-AU US STANDARD**

x

x

x

x

x

x

### Fuel holder - Portacombustibile - Brennstoffhalterung - Porte brûleur - Contenedor de combustible



**Fuel holder kit, two burners**  
Set Porta Combustibile Solido doppio - Brennstoffhalterung-  
Set - Set Porte Brûleur - Juego Contenedor de combustible  
sólido

**58132-KA 18-10 S/S**

x

x

x



**Fuel holder**  
Contenitore per combustibile solido - Brennstoffhalter  
Porte Brûleur - Contenedor de combustible sólido

**58132-FB 18-10 S/S**  
Ø 10 cm 7,5 L - Ø 4 in, 2 Gal.

x

x

x



**Jelly fuel**  
Gel Combustibile - Brenngel - Gel combustible  
Combustible Gel

**41695-15 200 gr - 7 oz.**

**41695-10 1 L - 0,3 Gal.**

**41695-50 5 L - 1,3 Gal.**

x

x

x

### Clutch - Frizione - Kupplung - Friction - Fricción



**58132-KQ RIGHT**

**58132-KP LEFT**

x

x



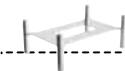
**58162-FA**

**58172-FA**

x

x

### Holder - Supporto - Ständer - Support - Supporto



**58162-AA 18-10 S/S**

**57162-AA Silverplated S/S**

x

x

x

x

buffet

Accessories & Components

buffet

Accessories & Components

# Accessories & Components

## Asia, Atlantic Buffet Sytem (ABS) & Petite Marmite Round

### Porcelain - Porcellana - Porzellan - Porcelaine - Porcelana



**Porcelain insert** - Inserto Porcellana - Porzellaneinsatz - Bac porcelaine - Baño-maria porcelana

- 44352-30** Ø 33 cm h 6 cm 3 L - Ø 13 in. H. 2¼ in. 0.8 Gal.
- 44352-40** Ø 40 cm h 7.5 cm 6 L - Ø 15¼ in. H. 3 in. 1.6 Gal.



**Porcelain insert, 2 food sections**  
Inserto Porcellana, 2 scomparti - Porzellaneinsatz, 2 - tlg. - Bac porcelaine, 2 comp. Baño-maria porcelana, 2 compartimentos

- 44355-30** Ø 33 cm - 1.5 x 2 L - Ø 13 in. 0.4 x 2 gal.
- 44355-40** Ø 40 cm - 2.5 x 2 L - Ø 15¼ in. 0.7 x 2 gal.



**Porcelain insert** - Inserto Porcellana - Porzellaneinsatz - Bac porcelaine - Baño-maria porcelana

- 58166-EL** Ø 30 cm - Ø 11¼ in.
- 58166-EC** Ø 36 cm - Ø 15 in.
- 58166-EB** Ø 40 cm - Ø 15 ¾ in.



**Porcelain insert, 2 food sections**  
Inserto Porcellana, 2 scomparti - Porzellaneinsatz, 2 - tlg. - Bac porcelaine, 2 comp. Baño-maria porcelana, 2 compartimentos

- 58166-FD** Ø 36 cm - Ø 15 in.
- 58166-EJ** Ø 40 - Ø 15 ¾ in.

### Stainless steel - Acciaio inox - Edelstahl rostfrei - Acier inoxidable - Acero inox



**Round food pan** - Portavivande - Einsatzbehälter rund - Bac rond - Baño-maria redondo

- 58136-EA** Ø 33 cm h 6 cm 3.5 L - Ø 13 in. H. 2¼ in. 0.9 Gal.
- 58136-EB** Ø 40 cm h 7.5 cm 6 L - Ø 15¼ in. H. 3 in. 1.6 Gal.



**Vegetable dish** - Legumiera - Gemüseschüssel - Légumier - Legumbrera

- 58166-EG** Ø 24 cm - Ø 9 7/16 in.
- 58166-EM** Ø 30 cm - Ø 11¼ in.
- 58166-EH** Ø 36 cm - Ø 15 in.
- 58166-EI** Ø 40 cm - Ø 15 ¾ in.

### Clutch - Frizione - Kupplung - Friction - Fricción

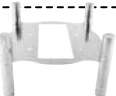


- 58136-KP** SINISTRA LEFT
- 58136-KR** SINISTRA LEFT
- 58136-KQ** DESTRA RIGHT



- 58166-FA** Ø 24 cm - Ø 9 7/16 in.
- 58166-FB** Ø 30 cm - Ø 11 ¾ in.
- 58166-FC** Ø 36 cm - Ø 15 in.
- 58166-FD** Ø 40 cm - Ø 15 ¾ in.
- 58168-FA** Ø 24 cm - Ø 9 7/16 in.
- 58176-FD** Ø 24 cm - Ø 9 7/16 in.
- 58176-FA** Ø 30 cm - Ø 11 ¾ in.
- 58176-FB** Ø 36 cm - Ø 15 in.
- 58176-FC** Ø 40 cm - Ø 15 ¾ in.

### Holder - Supporto - Ständer - Support - Supporto



- 58166-AA** 18-10 S/S **57166-AA** Silverplated S/S
- 58166-AM** 18-10 S/S **57166-AM** Silverplated S/S
- 58166-AB** 18-10 S/S **57166-AB** Silverplated S/S
- 58166-AC** 18-10 S/S **57166-AC** Silverplated S/S

Hotel & Restaurant Service

sambonet



Petite marmite



Asia round



ABS round



ABS round with glass

	Petite marmite		Asia round		ABS round			ABS round with glass			
	24 cm	33 cm	40 cm	24 cm	30 cm	36 cm	40 cm	24 cm	30 cm	36 cm	40 cm
Porcelain insert		x									
Porcelain insert, 2 food sections		x	x								
Porcelain insert											
Porcelain insert, 2 food sections											
Stainless steel Round food pan		x									
Stainless steel Vegetable dish											
Clutch		x	x	x							
Holder											

Accessories & Components buffet

Accessories & Components buffet

# Accessories & Components

Hotel & Restaurant Service

**sambonet**

## Asia, Atlantic Buffet Sytem (ABS) & Petite Marmite Round / Coffee Urn



Petite marmite



Asia Round



ABS Round



ABS Round with glass



Asia coffee dispenser



Asia 2000 coffee dispenser

24 cm

33 cm 40 cm

24 cm 30 cm 36 cm 40 cm

30 cm 36 cm 40 cm

**Electric heating units** - Piastra elettrica - Elektro-Heizelemente- Corps de chauffe electriques - Calentadores eléctricos



<b>58166-KE</b>	EUROPEAN STANDARD 220V 200W	20 x 25 cm - 7 7/8 x 9 7/8 in.
<b>58166-KU</b>	US STANDARD 110V 240W	20 x 25 cm - 7 7/8 x 9 7/8 in.
<b>58166-KP</b>	EUROPEAN STANDARD 220V 180W	20 x 21 cm - 7 7/8 x 8 3/8 in.



<b>58132-KE</b>	EUROPEAN STANDARD 220V 380W	20 x 25 cm - 7 7/8 x 9 7/8 in.
<b>58132-KU</b>	US STANDARD 110V 450W	20 x 25 cm - 7 7/8 x 9 7/8 in.



<b>58136-KE</b>	EUROPEAN STANDARD 220V 200W	20 x 25 cm - 7 7/8 x 9 7/8 in.
<b>58136-KU</b>	US STANDARD 110V 240W	20 x 25 cm - 7 7/8 x 9 7/8 in.



<b>58341-KE</b>	EUROPEAN STANDARD 220V 60W	Ø 13,5 cm - Ø 3 3/8 in.
<b>58341-KU</b>	US STANDARD 110V 170W	Ø 13,5 cm - Ø 3 3/8 in.

**Thermoregulator** - Termoregolatore - Thermoregler - Termorégulateur - Termorregulador



<b>58132-AE</b>	EUROPEAN STANDARD
<b>58132-AU</b>	US STANDARD

**Fuel holder** - Portacombustibile - Brennstoffhalterung - Porte brûleur - Contenedor de combustible



**Fuel holder kit** - Porta Combustibile Solido - Brennstoffhalterung - Set Set Porte Brûleur  
Juego Contenedor de combustible sólido

<b>58132-KA</b>	18-10 S/S DOUBLE BURNERS
<b>58136-KA</b>	18-10 S/S SINGLE BURNER



**Fuel holder** - Containitore per combustibile solido Brennstoffhalter  
Porte Brûleur Contenedor de combustible sólido

<b>58132-FA</b>	18-10 S/S Ø 10 cm 5,5 L - Ø 4 in. 1,5 Gal.
<b>58132-FB</b>	18-10 S/S Ø 10 cm 7,5 L - Ø 4 in. 2 Gal.



**Jelly fuel** - Gel Combustibile - Brenngel - Gel Combustible  
Combustible Gel

<b>41695-15</b>	200 gr - 7 oz.
<b>41695-10</b>	1 L - 0,3 Gal.
<b>41695-50</b>	5 L - 1,3 Gal.

buffet

Accessories & Components

buffet

Accessories & Components