

holloware

High-Carbon

With High-Carbon, the Centro Stile Sambonet presents a cutting-edge project dedicated to hospitality professionals, where aesthetics and functionality merge in a single, bold design. The new tray, made from high-quality carbon fiber, is the perfect synthesis of lightness, strength, and ergonomics.

Clean, elegant lines, integrated handles, and a stackable structure define a product designed to ensure maximum efficiency in service and ease of maintenance. An innovation that redefines standards, offering a superior user experience in any professional setting.

Con High-Carbon, il Centro Stile Sambonet firma un progetto d'avanguardia dedicato ai professionisti dell'ospitalità, dove estetica e funzionalità si fondono in un unico oggetto dal carattere deciso. Il nuovo vassoio, realizzato in fibra di carbonio di alta qualità, rappresenta una sintesi perfetta tra leggerezza, resistenza ed ergonomia.

Linee essenziali ed eleganti, maniciatura integrata e struttura impilabile definiscono un prodotto pensato per garantire massima efficienza nel servizio e semplicità nella manutenzione. Un'innovazione che riscrive gli standard, offrendo un'esperienza d'uso superiore, in ogni contesto professionale.

Hotel & Restaurant Service

sambonet



Rectangular tray with handles
Vassoio rettangolare con maniglie
Ausstellplatte mit Griffen, rechteckig
Plateau rectangulaire avec anses
Bandeja rectangular con asas

new 54324-60
60x47 cm
23 3/4 x 18 1/2 in.



High-Carbon
holloware



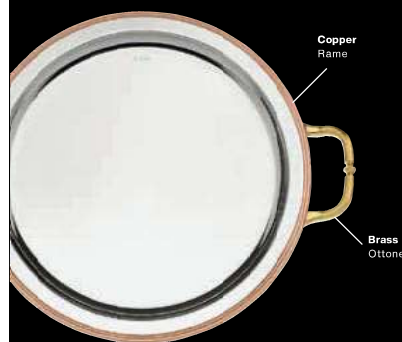
holloware classic

Contour

A timeless style characterized by the purity of its classic line has made Contour a favorite among the nobility for over two centuries. The nickel silver, copper and brass create soft and elegant forms for an excellent set made with the finest materials and impeccable taste.

Uno stile intramontabile, caratterizzato dalla purezza delle linee e dal richiamo alla classicità, ha reso Contour il preferito dalla nobiltà per oltre due secoli. L'alpacca argentata, il rame e l'ottone creano forme morbide e eleganti, per un servizio d'eccellenza realizzato con materiali prestigiosi e gusto impeccabile.

holloware classic



technical specifications specifiche tecniche

CHARACTERISTICS

An exclusive pressing process and valuable raw materials grant Contour a harmonious and exclusive design.

MATERIALS

Nickel-Silver: copper 66%, nickel 13% and zinc 21% (CuNi12Zn24), stainless steel AISI 304 (EN X5Cr-Ni18-10), brass and copper.

DETAILS

Thickness varies from 1,5 to 2 mm, up to 5 mm at the points most exposed to shocks and strain. Trays' edge, made of pressed copper, is welded with Sambonet patented special process.

Welding of handles, knobs, hinges, necks and bases are handmade by silver alloy brazing. Solid handles are made in hot pressed brass. Stainless steel is inserted into the handles to assure heat resistance.

One piece hinges are molded and the holes gauged to assure sharp work; 145° revolving covers. The especially shaped spout ensures excellent pouring.

SILVERPLATING

Exclusive technology - HSP
Hard Sambonet SilverPlating:

- purity of silver 999,5‰;
- silver layer hardness, up to 2 times more than traditional silverplating (>180 Hcv);
- sulphuration resistance up to 4 times more than traditional silverplating.

Outside finishing: shiny.

hssp hard sambonet silverplating

CARATTERISTICHE

Linee armoniose ed uniche realizzate grazie all'utilizzo di pregiati materiali e ad un esclusivo procedimento di stampaggio.

MATERIALI

Alpacca: rame 66%, nickel 13% e zinco 21% (Cu-Ni12Zn24), acciaio inossidabile AISI 304 (EN X5Cr-Ni18-10), ottone e rame.

DETTAGLI

Spessori differenziati da 1,5 a 2 mm e fino a 5 mm nei punti più esposti agli urti. Vassoi con bordo in rame cotto applicato con procedimento brevettato Sambonet. Saldature manici, pomoli, cerniere, becchi e basi con brasatura in lega d'argento eseguita a mano.

Manici massicci realizzati in ottone stampato a caldo, isolati con inserti in acciaio inox per assicurare una bassa trasmissione del calore.

Cerniere massicce realizzate in pezzo unico in ottone stampato a caldo, lavorate meccanicamente con fori calibrati per garantire un movimento di precisione; apertura a 145°.

Facilità nel versare i liquidi garantita dalla particolare conformazione dei becchi.

ARGENTATURA

Tecnologia esclusiva - HSP Hard Sambonet SilverPlating:

- purezza dell'argento utilizzato 999,5‰;
- durezza del rivestimento fino a 2 volte superiore rispetto all'argentatura tradizionale (>180 Hcv);
- resistenza alla sulfurazione fino a 4 volte superiore rispetto all'argentatura tradizionale.

- finitura esterna: lucida.

Contour



Coffee pot
Caffettiera
Kaffeekanne
Cafetière
Cafetera

53001 Silverplated

- 03 30 cl. - 11 oz.
- 06 60 cl. - 21½ oz.
- 09 90 cl. - 32 oz.
- 16 160 cl. - 57 oz.



Tea pot
Teiera
Teekanne
Théière
Tetera

53008 Silverplated

- 03 35 cl. - 12 oz.
- 06 60 cl. - 21½ oz.



Sugar bowl
Zucheriera
Zuckerdose
Sucnier
Azucarero

53010-22 Silverplated

20 cl. - 7 oz.

With fixed cover
53011-02 Silverplated



Creamer
Cremiera
Gießer
Crémier
Jarrita

53004-01 Silverplated

15 cl. - 5½ oz.



Milk pot
Lattiera
Milchkanne
Pot à lait
Jarra leche

53006 Silverplated

- 03 30 cl. - 11 oz.
- 06 60 cl. - 21½ oz.



Water pitcher
Brocca acqua
Wasserkrug
Carafe à eau
Jarra agua

53016-16 Silverplated

160 cl. - 57 oz.



Water pitcher with ice guard
Brocca acqua con fermagliaccio
Wasserkrug mit Eislippe
Carafe à eau avec arrêt pour glace
Jarra agua con reja hielo

53015-16 Silverplated

160 cl. - 57 oz.



Sugar bags holder
Supporto per bustine di zucchero
Behälter für Zuckerbeutel
Supporto pour sachets de sucre
Soporte para sobres de azúcar

53074-00 Silverplated

15 x 9 cm h 4,5 cm - 5¾ x 3¼ in. - h 1¾ in.

Contour holloware classic

Contour holloware classic

Hotel & Restaurant Service

sambonet



Contour

Hotel & Restaurant Service

sambonet



Grated cheese pot
Formaggiera
Käsedose
Ravier à parmesan
Quesera
53077-01 Silverplated
Ø 12,8 cm - Ø 5 in.



Oval sauce boat
Salsiera ovale
Sauciere, oval
Saucière, ovale
Salsiera oval
53085 Silverplated
-15 15 cl. - 5 oz.
-24 24 cl. - 8 oz.



Oval sauce boat with underliner
Salsiera ovale con piattino
Sauciere oval mit festem Unterteller
Saucière ovale avec sous-plat
Salsiera oval con fuente incorporada
53086-42 Silverplated
42 cl. - 14 oz.



Salt shaker
Spargisafe
Salzstreuer
Salière
Salero
54067-01 18-10 S/S
53067-01 Silverplated
h 8 cm - h 3 1/8 in.



Pepper shaker, 1 hole
Spargipepe, 1 foro
Pfefferstreuer, 1 Loch
Poivrier, 1 trou
Pimentero, 1 agujero
54068-01 18-10 S/S
53068-01 Silverplated
h 8 cm - h 3 1/8 in.



Toothpick holder
Portastecchi
Zahnstocherbehälter
Porte cure-dents
Fallillero
54071-01 18-10 S/S
53071-01 Silverplated
h 8 cm - h 3 1/8 in.



Butter dish
Burriera
Butterdose
Beurrier
Mantequillera
53110-02 Silverplated
Ø 13 cm - Ø 5 in.



Butter dish
Burriera
Butterdose
Beurrier
Mantequillera
53104-51 Silverplated
Ø 10,5 cm - Ø 4 in.



Caviar set
Caviar set
Caviar set
Couverts à caviar
Cubiertos para caviar
53029-40 Silverplated
Ø 41 cm - Ø 15 3/4 in.



Caviar flatware
Posate per caviale
Kaviarbesteck
Couverts à caviar
Cubiertos para caviar
41518 Mother of pearl
-00 Spoon - Cucchiaino
11,4 cm - 4 1/2 in.
-01 Spatula - Spatolina
10,2 cm - 4 in.
-02 Fork - Forchettina
11,4 cm - 4 1/2 in.



Pepper shaker, 1 hole
Spargipepe, 1 foro
Pfefferstreuer, 1 Loch
Poivrier, 1 trou
Pimentero, 1 agujero
53073 Silverplated
-06 h 6 cm - h 2 1/2 in.
-10 h 10 cm - h 4 in.



Salt shaker
Spargisafe
Salzstreuer
Salière
Salero
53072 Silverplated
-06 h 6 cm - h 2 1/2 in.
-10 h 10 cm - h 4 in.



Toothpick holder
Portastecchi
Zahnstocherbehälter
Porte cure-dents
Fallillero
53075-07 Silverplated
h 7 cm - h 2 3/4 in.



Mustard pot
Senapiera
Senfschale
Moutardier
Mostacero
53081-01 Silverplated
h 12 cm Ø 7 cm - h 2 1/2 in., Ø 4 3/4 in.



Cruet set, 4 pcs with caps holder
Servizio menage, 4 pz
Menage, 4-tlg
Ménagère, 4 pcs
Servicio de mesa, 4 pz
54065-04 18-10 S/S
53065-04 Silverplated
h 21 cm Ø 19 cm - h 8 1/2 in., Ø 7 1/2 in.



Oil & vinegar set, 2 pcs, with caps holder
Servizio olio e aceto, 2 pz, con portatappi
Essig- / Ölgestell, 2-tlg, mit Stoppelhalterung
Huillier / vinaigrier, 2 pcs, avec porte bouchons
Servicio de mesa, 2 pz, con lleva-tapones
53062-02 Silverplated
h 22,5 cm 19 x 10,5 cm - h 9 1/8 in., 7 1/2 x 4 1/8 in.

Contour holloware classic

Contour holloware classic

Contour



Ice cream cup
Coppa gelato
Eisbecher
Coupe à glace
Copa helado

53107-10 Silverplated
Ø 10 cm - Ø 4 in.



Cup with foot
Coppa con piede
Schale auf Fuß
Coupe sur pied
Copa con base

53109-13 Silverplated
Ø 13 cm - Ø 5 in.



Soup cup
Coppa crema / potage
Suppenschale
Coupe à crème / potage
Copa gazpacho / potage

53110-05 Silverplated
Ø 13 cm - Ø 5 in.



Vichyssoise cup
Coppa Vichyssoise
Vichy-Schale
Coupe à vichyssoise
Copa vichyssoise

53110-09 Silverplated
Ø 13 cm - Ø 5 in.



Supreme cup
Coppa cocktail scampi
Hummer- / Cocktailschale
Coupe à suprême
Copa cóctel camarones

53110-07 Silverplated
Ø 13 cm - Ø 5 in.



Supreme cup with crystal
Coppa cocktail scampi con cristallo
Hummer- / Cocktailschale mit Kristall
Coupe à suprême avec cristal
Copa cóctel camarones con cristal

53110-08 Silverplated
Ø 13 cm - Ø 5 in.



Caviar cup
Coppa caviale
Kaviarkühler
Coupe à caviar
Copa caviar

53110-04 Silverplated
Ø 13 cm - Ø 5 in.



Finger bowl
Coppa lavadita
Fingerschale
Rince doigts
Bol para limpiar dedos

53101-11 Silverplated
Ø 11 cm - Ø 4¼ in.



Escargot plate
Piatto lumache
Schneckenplatte
Plat à escargots
Plato caracoles

53049 Silverplated
-06 Ø 25 cm - 10 in.
6 snails - 6 lumache
-12 Ø 31 cm - 12¼ in.
12 snails - 12 lumache





Soup tureen
Zuppiera
Suppenschüssel
Soupière
Sopera

53054 Silverplated

-**55** Ø 15 cm - 70 cl. - Ø 6 in. - 23 oz.
-**58** Ø 18 cm - 90 cl. - Ø 7 in. - 30 oz.
-**60** Ø 20 cm - 140 cl. - Ø 8 in. - 47 oz.
-**64** Ø 24 cm - 230 cl. - Ø 9½ in. - 77 oz.
-**68** Ø 28 cm - 350 cl. - Ø 11 in. - 118 oz.



Vegetable dish
Legumiera
Gemüseschüssel
Légumier
Legumbrera

53056 Silverplated

-**55** Ø 15 cm - 50 cl. - Ø 6 in. - 16 oz.
-**58** Ø 18 cm - 90 cl. - Ø 7 in. - 30 oz.
-**60** Ø 20 cm - 120 cl. - Ø 8 in. - 40 oz.
-**64** Ø 24 cm - 180 cl. - Ø 9½ in. - 60 oz.
-**68** Ø 28 cm - 280 cl. - Ø 11 in. - 93 oz.



Rectangular chafing dish
Rechaud rettangolare
Chafing-dish, rechteckig
Chafing-dish, rectangulaire
Chafing-dish, rectangular

57131A40 Fully silverplated

Outside dimensions with handles and knob:
Dimensioni esterne con maniglie e pomolo:

49 x 27 cm - h 33,5 cm - 19¼ x 10¾ in. - h 13¼ in.

Equipped with 1 china baking dish
Provvista di 1 pirofila in porcellana

58131-PA Porcelain



Round chafing dish
Rechaud tondo
Chafing-dish, rund
Chafing-dish, rond
Chafing-dish, redondo

57135 Fully silverplated

Outside dimensions with handles and knob:
Dimensioni esterne con maniglie e pomolo:

A25 Ø 25 cm - 25 x 33 cm - h 31,5 cm
Ø 9¾ in. - 13 x 9¾ in. - h 12½ in.
A31 Ø 31 cm - 31 x 39,5 cm - h 32 cm
Ø 12½ in. - 15½ x 12½ in. - h 12½ in.
A41 Ø 40,5 cm - 40,5 x 51 cm - h 37,5 cm
Ø 16 in. - 20 x 16 in. - h 14¾ in.

Equipped with 1 china baking dish
Provvista di 1 pirofila in porcellana

58135 Porcelain

-**PA** for **57135A25**
-**PB** for **57135A31**
-**PC** for **57135A41**



Round vegetable dish
Legumiera tonda
Gemüseschüssel, rund
Légumier, rond
Legumbrera, redonda

57135 Silverplated

Outside dimensions without handles and knob:
Dimensioni esterne senza maniglie e pomolo:

-**66** Ø 25 cm h 18 cm - Ø 9¾ in. h 7¾ in.
-**72** Ø 31 cm h 18,5 cm - Ø 12½ in. h 7¼ in.
-**82** Ø 40,5 cm h 22,5 cm - Ø 16½ in. h 8¾ in.

Equipped with 1 china baking dish
Provvista di 1 pirofila in porcellana

58135 Porcelain

-**PA** for **57135-66**
-**PB** for **57135-72**
-**PC** for **57135-82**



Oval vegetable dish
Legumiera ovale
Gemüseschüssel, oval
Légumier, ovale
Legumbrera, oval

57134-88 Silverplated

Outside dimensions without handles and knob:
Dimensioni esterne senza maniglie e pomolo:

47 x 30 cm h 21,5 cm - 18½ x 11¾ in. h 8½ in.

Equipped with 1 china baking dish
Provvista di 1 pirofila in porcellana

58134-PA Porcelain



Rectangular vegetable dish
Legumiera rettangolare
Gemüseschüssel, rechteckig
Légumier, rectangulaire
Legumbrera, rectangular

57131-81 Silverplated

Outside dimensions without handles and knob:
Dimensioni esterne senza maniglie e pomolo:

40 x 27 cm h 19,5 cm - 15¾ x 10¾ in. h 7¾ in.

Equipped with 1 china baking dish
Provvista di 1 pirofila in porcellana

58131-PA Porcelain

technical specifications specifiche tecniche

CHAFING DISHES
Stainless steel 18-10 construction,
Solid brass legs and handles.
Shiny finish.
Solid alcohol heating,
Equipped with 1 china baking dish
and 1 fuel holder.

RECHAUD
Struttura in acciaio inossidabile 18-10.
Supporti e maniglie in ottone massiccio.
Finitura lucida.
Riscaldamento a combustibile solido.
Rechaud provvisto di 1 pirofila in porcellana
e 1 contenitore per combustibile solido.



Contour



Round platter
Piatto tondo
Platte, rund
Plat rond
Plato redondo

53035 Silverplated

- 31 outside - esterno: Ø 31 cm - Ø 12¼ in.
inside - interno: Ø 22 cm - Ø 8¾ in.
- 36 outside - esterno: Ø 36 cm - Ø 14¼ in.
inside - interno: Ø 25,5 cm - Ø 10½ in.
- 41 outside - esterno: Ø 41 cm - Ø 16 in.
inside - interno: Ø 29 cm - Ø 11½ in.



Dome cover, round
Cloche tonda
Speiseglocke, rund
Cloche ronde
Cúpula redonda

53037 Silverplated

- 18 Ø 18 cm - 7 in.
- 20 Ø 21 cm - 8¼ in.
- 23 Ø 23,5 cm - 9¼ in.
- 26 Ø 25,5 cm - 10 in.
- 28 Ø 28,5 cm - 11¼ in.



Oval platter
Piatto ovale
Platte, oval
Plat ovale
Plato oval

53041 Silverplated

- 31 31 x 20 cm - 12¼ x 7¾ in.
- 36 36 x 23 cm - 14¼ x 9 in.
- 42 42 x 27 cm - 16½ x 10½ in.
- 47 47 x 30 cm - 18½ x 12 in.
- 54 54 x 38 cm - 21¼ x 15 in.



China insert for oval platter
Porcellana per piatto ovale
Porzellan für ovale Platte
Porcelaine pour plat ovale
Porcelana para plato oval

59906 Porcelain

- 21 21 x 11 cm - 8 x 4¼ in.
- 25 25,5 x 13 cm - 10 x 5 in.
- 29 29 x 15,5 cm - 11½ x 5¾ in.
- 33 33 x 17,5 cm - 13 x 8 in.



Cover for oval platter
Copripiatto per piatto ovale
Speiseglocke für ovale Platte
Cloche pour plat ovale
Cubreplatos para plato oval

53043 Silverplated

- 29 29 x 18 cm - 11½ x 7 in.
- 34 34 x 21 cm - 13¾ x 8¼ in.
- 40 40 x 25 cm - 15¾ x 9¾ in.
- 45 45 x 28 cm - 17¾ x 11 in.
- 53 53 x 35 cm - 20¾ x 14¼ in.



Fish dish
Piatto pesce
Fischplatte
Plat à poisson
Fuente pescado

53045 Silverplated

- 55 outside - esterno: 55 x 23 cm - 21½ x 9 in.
inside - interno: 46 x 15 cm - 18¼ x 5¾ in.
- 65 outside - esterno: 65 x 28 cm - 25¼ x 10 in.
inside - interno: 54 x 17 cm - 21¼ x 6¾ in.
- 74 outside - esterno: 74 x 29 cm - 27½ x 11½ in.
inside - interno: 63 x 19 cm - 24¾ x 7½ in.



Relish dish, 3 compartments
Portasalatini, 3 comparti
Salzgebäckständer, 3 Abteile
Porte-appetizers, 3 compts.
Entremesera, 3 compartimentos

53088-19 Silverplated

- h 9 cm - Ø 10,5 cm - h 3½ in. - Ø 4 in.



Bread basket
Cestino pane
Brotkorb
Corbille à pain
Cesta pan

53092 Silverplated

- 25 25 x 16 cm - 9¼ x 6¼ in.
- 31 31 x 20 cm - 12¼ x 7¾ in.



Relish dish, 4 compartments with crystal
Portasalatini, 4 comparti, con cristalli
Salzgebäckschale, 4 Abteile, mit Kristalleinsätzen
Porte-appetizers, 4 compts., avec cristaux
Entremesera, 4 compartimentos, con cristales

53090-04 Silverplated

- h 19 cm - Ø 8 cm - h 7½ in. - Ø 3 in.

Contour holloware classic

Contour holloware classic

Contour



Contour hollowware classic



Fruit / pastry stand
Alzata frutta / dolci
Obst- / Gebäckständer
Étagère à fruits / petits fours
Confitero / frutero

53136 Silverplated
-18 h 11 cm Ø 19 cm - h 4 1/2 in. - Ø 7 1/2 in.
-28 h 14 cm Ø 29 cm - h 5 1/2 in. - Ø 11 1/2 in.



Fruit / pastry stand
Alzata frutta / dolci
Obst- / Gebäckständer
Étagère à fruits / petits fours
Confitero / frutero

53136-12 Silverplated
h 7 cm Ø 12,5 cm - h 2 3/4 in. - Ø 5 in.



Cake stand
Alzata torta
Kuchenständer
Support à tarte
Pedestal para tartas

53137 Silverplated
-29 h 12 cm Ø 29,5 cm - h 4 3/4 in. - Ø 11 1/4 in.
-38 h 17 cm Ø 39,5 cm - h 6 1/2 in. - Ø 15 1/2 in.



Dome cover
Cloche
Speiseglocke
Cloche
Cúpula

56137-69 18-10 S/S, methacrylate
53137-69 Silverplated, methacrylate
h 16 cm - Ø 28 cm - h 6 5/16 in. - Ø 11 in.

Suitable for - Adatto a:
Cake stand - Alzata torta **53137-29**



Pastry stand, 2 tiers
Alzata dolci, 2 piani
Gebäckständer, 2-stöckig
Porte petits fours, 2 étages
Confitero, 2 niveles

53139-02 Silverplated
h 31 cm - Ø 18/28 cm - h 12 in. - Ø 7 1/11 in.



Pastry stand, 3 tiers
Alzata dolci, 3 piani
Gebäckständer, 3-stufig
Porte petits fours, 3 étages
Confitero, 3 niveles

53139-03 Silverplated
h 43 cm - Ø 18 / 28 / 38 cm
h 17 in. - Ø 7 / 11 / 15 in.



Fruit stand, 3 tiers
Alzata frutta, 3 piani
Obstständer, 3-stöckig
Étagère à fruits, 3 étages
Frutero, 3 niveles

53136-03 Silverplated
h 74 cm - Ø 25 / 31,5 / 39,5 cm
h 29 in. - Ø 10 1/4 / 12 1/2 / 15 1/2 in.



Wedding cake stand, 3 tiers
Alzata torta matrimoniale, 3 piani
Hochzeitskuchenständer, 3-stöckig
Support à tartes, 3 étages
Pedestal para tartas, 3 niveles

53137-03 Silverplated
h 74 cm - Ø 25 / 31,5 / 39,5 cm
h 29 in. - Ø 10 1/4 / 12 1/2 / 15 1/2 in.

Contour hollowware classic

Contour

Hotel & Restaurant Service

sambonet



Round tray
Vassoio tondo
Ausstellplatte, rund
Plateau rond
Bandeja redonda

53026 Silverplated

- 36 outside - esterno: Ø 36 cm - Ø 14 1/8 in.
inside - interno: Ø 31 cm - 12 1/4 in.
- 41 outside - esterno: Ø 41 cm - Ø 16 in.
inside - interno: Ø 35 cm - Ø 13 3/4 in.



Round tray with handles
Vassoio tondo con maniglie
Ausstellplatte mit Griffen, rund
Plateau rond avec anses
Bandeja redonda con asas

53030 Silverplated

- 36 outside - esterno: Ø 36 cm - Ø 14 1/8 in.
inside - interno: Ø 31 cm - 12 1/4 in.
- 41 outside - esterno: Ø 41 cm - Ø 16 in.
inside - interno: Ø 35 cm - Ø 13 3/4 in.



Show plate
Piatto presentazione
Platzteller
Plat à présentation
Plato de presentación

53032-31 Silverplated

- outside - esterno: Ø 31 cm - 12 1/4 in.
inside - interno: Ø 19,8 cm - 7 3/4 in.



Underliner
Sottocoppa
Unterteller
Sous-coupe
Platillo

53112 Silverplated

- 14 outside - esterno: Ø 14 cm - Ø 5 1/2 in.
inside - interno: Ø 8 cm - Ø 3 in.
- 18 outside - esterno: Ø 18 cm - Ø 7 in.
inside - interno: Ø 11,4 cm - Ø 4 1/2 in.
- 22 outside - esterno: Ø 22 cm - Ø 8 1/2 in.
inside - interno: Ø 14,1 cm - Ø 5 1/2 in.



Rectangular tray
Vassoio rettangolare
Tablett, rechteckig
Plateau rectangulaire
Bandeja rectangular

53020 Silverplated

- 30 outside - esterno: 29 x 21 cm - 11 1/2 x 8 1/4 in.
inside - interno: 25 x 17 cm - 9 7/8 x 6 1/2 in.
- 40 outside - esterno: 40 x 27 cm - 15 3/4 x 10 3/4 in.
inside - interno: 33 x 20 cm - 13 1/4 x 7 7/8 in.
- 50 outside - esterno: 50 x 38 cm - 20 1/4 x 15 in.
inside - interno: 44 x 32 cm - 17 3/8 x 12 1/2 in.



Rectangular tray with handles
Vassoio rettangolare con maniglie
Ausstellplatte mit Griffen, rechteckig
Plateau rectangulaire avec anses
Bandeja rectangular con asas

53024 Silverplated

- 30 outside - esterno: 29 x 21 cm - 11 1/2 x 8 1/4 in.
inside - interno: 25 x 17 cm - 9 7/8 x 6 1/2 in.
- 40 outside - esterno: 40 x 27 cm - 15 3/4 x 10 3/4 in.
inside - interno: 33 x 20 cm - 13 1/4 x 7 7/8 in.
- 50 outside - esterno: 50 x 38 cm - 20 1/4 x 15 in.
inside - interno: 44 x 32 cm - 17 3/8 x 12 1/2 in.



Square tray
Vassoio quadrato
Ausstellplatte, quadratisch
Plateau carré
Bandeja cuadrada

53019-26 Silverplated

- outside - esterno: 26 x 26 cm - 10 1/4 x 10 1/4 in.
inside - interno: 22 x 22 cm - 8 1/2 x 8 1/2 in.



Cash tray
Vassoio Conto
Rechnungstablett
Plateau à monnaie
Bandeja cuentas y propinas

53018-22 Silverplated

- 22 x 15 cm - 8 1/2 x 6 in.



Contour holloware classic

Contour holloware classic

Contour



Punch bowl
Coppa punch
Champagnerkühler
Coupe à punch
Ponchera

53143-20 Silverplated

Ø 45 cm - 20 L
Ø 17½ in. - 5.3 Gal.



Punch ladle
Mestolo punch
Punch-Schöpfkelle
Louche à punch
Cucharón para punch

62706-42 Silverplated

42 cm - 16½ in.



Hotel & Restaurant Service

sambonet

Contour holloware classic



Sherbet pot
Sorbettiera termica
Sorbetbehälter, isoliert
Sorbetière, isotherme
Sorbetera térmica

53121-64 Silverplated

Ø 14 cm - 160 cl.
Ø 5½ in. - 53¼ oz.



Insulated wine cooler
Glacette termica
Flaschenkühler
Rafraichisseur à bouteille
Enfriador de botella

53121-14 Silverplated

h 21,5 cm - Ø 14 cm - 160 cl.
h 8½ in. - Ø 5½ in. - 53¼ oz.



Ice bucket
Secchio ghiaccio
Eisbehälter
Seau à glace
Cubitera de champaña

53116-18 Silverplated

h 16 cm - Ø 18 cm
h 6¼ in. - Ø 7 in.



Wine cooler
Secchio spumante
Weinkühler
Seau à champagne
Cubitera de champaña

53117-20 Silverplated

h 25,5 cm - Ø 20,5 cm
h 10 in. - Ø 8 in.



Wine cooler
Secchio vino
Weinkühler
Seau à vin
Cubo vino

new 53117-26 Silverplated

26 x 21 cm - h 19,5 cm
10¼ x 8¼ in. - Ht. 7¾ in.



Wine cooler stand
Supporto secchio spumante
Weinkühlerständer
Support pour seau à champagne
Soporte cubo de champaña

53119-68 Silverplated

h 58 cm - Ø 19,5 cm
h 23 in. - Ø 7¾ in.

Contour holloware classic



Oval napkin holder
Legatovagliolo ovale
Serviettenring, oval
Porte serviette ovale
Servilletero oval
53094-05 Silverplated
5 x 3 cm - 2 x 1 in.



Table number holder
Portanumero da tavola / segnaposto
Tischnummern-Aufsteller
Porte numéro de table
Porta número de mesa
53098-11 Silverplated
11 x 6,5 cm - 4 1/4 x 2 1/2 in.



Candelabra 3 lights
Candelabro 3 luci
Kerzenleuchter, 3-flammig
Chandelier, 3 branches
Candelabro, 3 brazos
53126-30 Silverplated
h 30 cm - h 11 3/4 in.



Candlestick
Candeliera
Kerzenleuchter
Chandelier
Candelabro una vela
53125-08 Silverplated
h 8,5 cm - h 3 1/4 in.

Contour holloware classic



Table number stand
Supporto per numero da tavola
Tischnummernständer
Support pour numéro de table
Soporte para número de mesa
53164-51
Silverplated
h 51 cm - h 20 in.



Table stand number
Numero da tavola per supporto
Ständertischnummer
Numéro pour support de table
Número para soporte de mesa
59957-24
Plastic
Ø 23,5 cm - Ø 9 1/4 in.



Flower vase
Vasetto fiori
Blumenvase
Vase à fleurs
Florero
53096-18
Silverplated
h 17,6 cm - h 6 3/4 in.



Candlestick
Candeliera
Kerzenleuchter
Chandelier
Candelabro una vela
53125
Silverplated
-26 h 26 cm - h 10 1/4 in.
-32 h 32 cm - h 12 1/2 in.



Candelabra 3 lights
Candelabro 3 luci
Kerzenleuchter, 3-flammig
Chandelier, 3 branches
Candelabro, 3 brazos
53126-03 Silverplated
h 40 cm - h 15 3/4 in.



Candelabra 5 lights
Candelabro 5 luci
Kerzenleuchter, 5-flammig
Chandelier, 5 branches
Candelabro, 5 brazos
53126-05 Silverplated
h 40 cm - h 15 3/4 in.

Contour holloware classic



holloware modern

Elite

A line characterized by nostalgic forms that have a subdued elegance and represent the contemporary alternative to classicism. Sambonet's exclusive silver plating techniques and moulding procedures give life to this balance of refined and extremely functional forms.

Una linea caratterizzata da forme nostalgiche che mantengono una sobria eleganza e rappresentano l'alternativa contemporanea al classicismo.

Le esclusive tecniche di argentatura e i procedimenti di stampaggio firmati Sambonet danno vita a questo equilibrio di forme raffinate ma estremamente funzionali.

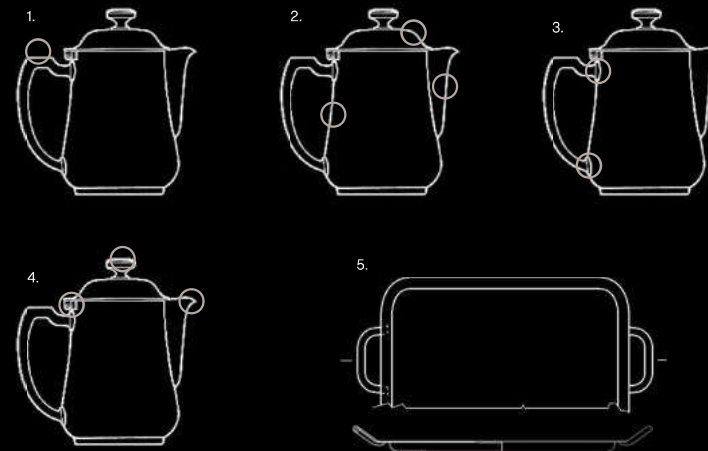
holloware modern



Elite hollowware modern

Hotel & Restaurant Service

sambonet



technical specifications specifiche tecniche

hSp
hard sambonet
silverplating

Characteristics
Lovely oval shape created thanks to Sambonet exclusive pressing process.

Materials
Stainless steel AISI 304 (EN X5CrNi18-10).

Details
Thickness (2) of trays and serving items: 1,5 mm;
special pieces up to 2 mm.
Trays (5) have plain edges to ensure hygiene and easy cleaning.
Welding (3) is handmade by silver alloy brazing.
Solid handles (1) are made in micro-casted stainless steel.
One piece hinges (4) are molded and the holes gauged to assure sharp work; 135° revolving covers.
The massive brass knobs (4) are nickel-plated and chrome plated. The especially shaped spout (4) ensures excellent pouring.

Silverplating
Exclusive technology - HSP
Hard Sambonet SilverPlating:
-purity of silver 999,5‰;
-silver layer hardness, up to 2 times more than traditional silverplating (>180 Hcv);
-sulphuration resistance up to 4 times more than traditional silverplating.
Outside finishing: shiny.

Caratteristiche
Gradevole forma ovale della caffetteria realizzata grazie ad un esclusivo procedimento di stampaggio Sambonet.

Materiali
Acciaio inossidabile AISI 304 (EN X5CrNi18-10).

Dettagli
Spessori (2) di vassoi e caffetteria: 1,5 mm; pezzi speciali fino a 2 mm.
Vassoi (5) con bordo piano per una maggiore igienicità e facilità di pulizia.
Saldature (3) con brasatura in lega d'argento eseguita a mano.
Manici (1) massicci realizzati in acciaio inox micro-fuso.
Cerniere (4) massicce realizzate in pezzo unico in acciaio inox microfuso, lavorate meccanicamente con fori calibrati per garantire un movimento di precisione; apertura a 135°.
Pomoli (4) in ottone massiccio nichelati e cromati.
Facilità (4) nel versare i liquidi garantita dalla particolare conformazione dei becchi.

Argentatura
Tecnologia esclusiva - HSP
Hard Sambonet SilverPlating:
-purezza dell'argento utilizzato 999,5‰;
-durezza del rivestimento fino a 2 volte superiore rispetto all'argentatura tradizionale (>180 Hcv);
-resistenza alla sulfurazione fino a 4 volte superiore rispetto all'argentatura tradizionale.
Finitura esterna: lucida.

Elite hollowware modern

Elite



modern

holloware

Elite

Hotel & Restaurant Service

sambonet



Sugar bowl
Zuccheriera
Zuckerdose
Sucrier
Azucarero

56010 18-10 S/S
55010 Silverplated S/S
55010G PVD Gold
55010U PVD Rum

-22 20 cl. - 7 oz.
-23 26 cl. - 9 oz.*

* Not available in PVD



Sugar bowl with handles
Zuccheriera con maniglia
Zuckerdose mit Griffen
Sucrier avec anses
Azucarero con asas

56012-23 18-10 S/S
55012-23 Silverplated S/S
55012G23 PVD Gold
55012U23 PVD Rum

26 cl. - 9 oz.



Creamer
Cremiera
GieBer
Crémier
Jarrita

56004-01 18-10 S/S
55004-01 Silverplated S/S
55004G01 PVD Gold
55004U01 PVD Rum
5A004P01 Antique PVD Champagne
5A004U01 Antique PVD Rum

15 cl. - 5 1/2 oz.



Milk pot
Lattiera
Milchkanne
Pot à lait
Jarra leche

56006 18-10 S/S
55006 Silverplated S/S
55006G PVD Gold
55006U PVD Rum

-03 30 cl. - 11 oz.
-06 60 cl. - 21 1/2 oz.
-09 90 cl. - 32 oz.*

* Not available in PVD



Tea pot
Teiera
Teekanne
Théière
Tetera

56008 18-10 S/S
55008G Silverplated S/S
55008U PVD Gold
55008U PVD Rum
5A008P05 Antique PVD Champagne
5A008U05 Antique PVD Rum

-03 30 cl. - 11 oz.
-05 50 cl. - 17 1/2 oz.
-12 120 cl. - 40 oz.*

* Not available in PVD



Coffee pot
Caffettiera
Kaffeekanne
Cafetière
Cafetera

56001 18-10 S/S
55001 Silverplated S/S
55001G PVD Gold
55001U PVD Rum

-03 30 cl. - 11 oz.
-06 80 cl. - 21 1/2 oz.
-09 90 cl. - 32 oz.*
-16 160 cl. - 57 oz.*

* Not available in PVD



Coffee pot with goose neck
Caffettiera a collo d'oca
Kaffeekanne mit Schwanenhals
Cafetière avec col de cygne
Cafetera con cuello de cisne

56003 18-10 S/S
55003 Silverplated S/S

-10 100 cl. - 33 1/2 oz.
-16 160 cl. - 50 oz.



Water pitcher with ice guard
Brocca acqua con fermagliaiaccio
Wasserkrug mit Eislippe
Carafe à eau avec arrêt pour glace
Jarra agua con reja hielo

56015-16 18-10 S/S
55015-16 Silverplated S/S
55015G16 PVD Gold
55015U16 PVD Rum

160 cl. - 57 oz.



Insulated beverage server
Caraffa termica
Thermoskanne
Pot isothermique
Jarra térmica

56013 18-10 S/S
55013 Silverplated S/S

-03 30 cl. - 11 oz.
-06 60 cl. - 21 1/2 oz.
-10 100 cl. - 33 1/2 oz.

For high performance, before use warm the pot filling with hot water.
Per ottimizzare l'impiego, preriscaldare con acqua calda prima dell'uso.

modern

holloware

Elite



Relish dish, 3 compartments
Portasalatini, 3 comparti
Salzgebäckschale, 3 Abteile
Porte-appetizers, 3 compts.
Entremesera, 3 compartimentos

56089-08 18-10 S/S
55089-08 Silverplated S/S

h 8,5 cm - Ø 10 cm
h 3 3/4 in. - Ø 3 3/4 in.



Relish dish, 3 compartments
Portasalatini, 3 comparti
Salzgebäckschale, 3 Abteile
Porte-appetizers, 3 compts.
Entremesera, 3 compartimentos

56088-10 18-10 S/S
55088-10 Silverplated S/S

h 9,5 cm - Ø 8,5 cm
h 3 3/4 in. - Ø 3 3/4 in.



Relish dish with crystal, 3 compartments
Portasalatini con cristalli, 3 comparti
Salzgebäckschale mit Kristalleinsätzen, 3 Abteile
Porte-appetizers avec cristaux, 3 compts.
Entremesera con cristales, 3 compartimentos

56088-03 18-10 S/S
55088-03 Silverplated S/S

h 9,5 cm - Ø 8,5 cm
h 3 3/4 in. - Ø 3 3/4 in.



Jam jars holder
Supporto per vasetti di marmellata
Behälter für Konfitürengläser
Support pour pots de confiture
Soporte para botes de mermelada

56077-00 18-10 S/S
55077-00 Silverplated S/S

23 x 4,5 x 4 cm - 9 x 1 3/4 x 1 1/2 in.



Sugar bags holder
Supporto per bustine di zucchero
Behälter für Zuckerbeutel
Support pour sachets de sucre
Soporte para sobres de azúcar

56074-00 18-10 S/S
55074-00 Silverplated S/S
5A074PO0 Antique PVD Champagne
5A074U00 Antique PVD Rum

12 x 5,5 x 4 cm - 4 3/4 x 2 1/4 x 1 1/2 in.



Elite holloware modern



Fruit / pastry stand
Alzata frutta / dolci
Obst-/Gebäckständer
Étagère à fruits / petits fours
Confitero / frutero

56136-13 18-10 S/S
55136-13 Silverplated S/S

Ø 13,8 cm h 11 - Ø 5 1/2 in. h 4 1/2 in.



Fruit stand
Alzata frutta
Fruchtschale auf Fuß
Coupe à fruits sur pied
Frutero

56136-21 18-10 S/S
55136-21 Silverplated S/S
55136G21 PVD Gold
55136U21 PVD Rum

Ø 21,5 cm h 12 - Ø 8 1/2 in. h 4 3/4 in.



Fruit stand
Alzata frutta
Fruchtschale auf Fuß
Coupe à fruits sur pied
Frutero

56134-21 18-10 S/S
55134-21 Silverplated S/S

Ø 21,5 cm h 7 - Ø 8 1/2 in. h 2 3/4 in.



Bread stand
Alzata pane
Brotständer
Plat à pain sur pied
Pedestal para pan

56135-22 18-10 S/S
55135-22 Silverplated S/S
55135G22 PVD Gold
55135U22 PVD Rum

Ø 22 cm h 11 - Ø 9 in. h 4 1/2 in.



Cake stand
Alzata torta
Kuchenständer
Support à tarte
Pedestal para tartas

56137-28 18-10 S/S
55137-28 Silverplated S/S
55137G28 PVD Gold
55137U28 PVD Rum

h 9,5 cm Ø 28 cm - h 3 3/4 in. Ø 11 in.



Cake / fruit stand with edge
Alzata torta / alzata frutta con bordo
Kuchen- / Obstständer, mit Rand
Support à tarte / coupe à fruits avec bord
Pedestal para tartas / frutero con borde

56138-28 18-10 S/S
55138-28 Silverplated S/S

h 9,5 cm Ø 28 cm - h 3 3/4 in. Ø 11 in.

Elite holloware modern

Elite



Jam / honey stand, 2 tiers
Alzata portamarmellata, 2 piani
Konfitürständer, 2-stöckig
Porte confitures, 2 étages
Confitero, 2 niveles

56140-02 18-10 S/S
55140-02 Silverplated S/S

h 19 cm - Ø 14 / 18,5 cm
h 7 1/2 in. - Ø 5 1/2 / 7 1/4 in.



Pastry stand, 2 tiers
Alzata dolci, 2 piani
Gebäckständer, 2-stöckig
Porte petits fours, 2 étages
Confitero, 2 niveles

56139-02 18-10 S/S
55139-02 Silverplated S/S
56139G02 PVD Gold *
55139U02 PVD Rum *

h 32,5 cm - Ø 18 / 28 cm
h 13 in. - Ø 7 1/4 / 11 in.

* Ring not in PVD.



Pastry stand
Alzata dolci
Gebäckständer
Porte petits fours
Confitero

56139-01 18-10 S/S
55139-01 Silverplated S/S
56139G01 PVD Gold *
55139U01 PVD Rum *

h 20,5 cm - Ø 18,5 cm
h 8 in. - Ø 7 1/4 in.

* Ring not in PVD.



Wedding cake stand, 3 tiers
Alzata torta matrimoniale, 3 piani
Hochzeitskuchenständer, 3-stöckig
Support à tartes, 3 étages
Pedestal para tartas, 3 niveles

56137-03 18-10 S/S
55137-03 Silverplated S/S

h 64,5 cm - Ø 18,5 / 28 / 38 cm
h 25 1/2 in. - Ø 7 1/4 / 11 / 15 1/4 in.



Fruit stand, 3 tiers
Alzata frutta, 3 piani
Obstständer, 3-stöckig
Étagère à fruits, 3 étages
Frutero con pié, 3 niveles

56136-03 18-10 S/S
55136-03 Silverplated S/S

h 64,5 cm - Ø 18,5 / 28 / 38 cm
h 25 1/2 in. - Ø 7 1/4 / 11 / 15 1/4 in.



Pastry stand, 3 tiers
Alzata dolci, 3 piani
Gebäckständer, 3-stöckig
Porte petits fours, 3 étages
Confitero, 3 niveles

56139-03 18-10 S/S
55139-03 Silverplated S/S
56139G03 PVD Gold *
55139U03 PVD Rum *

h 47 cm - Ø 18 / 28 / 39 cm
h 18 in. - Ø 7 1/4 / 11 / 15 1/2 in.

* Ring not in PVD.



Hotel & Restaurant Service

sambonet

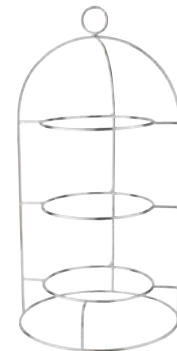


Petits fours stand, 4 small dishes
Alzata dolci, 4 piattini
Gebäckständer, 4 Schälchen
Présentoir à douceurs 4 coupelles
Soporte para dulces, 4 platillos

56141-04 18-10 S/S
55141G04 PVD Gold
56141U04 PVD Rum
5A141P04 Antique PVD Champagne
5A141U04 Antique PVD Rum

Ø 16 cm h 20 cm
Ø 6 1/4 in., h 7 7/8 in.

Small dishes Piattini
Ø 5,5 cm - 2 1/8 in.



Plates serving stand, 3 tiers
Alzata piatti, 3 piani
Teller-Elagere, 3-stufig
Présentoir assiettes, 3 étages
Soporte platos, 3 niveles

56133-03 18-10 S/S
55133G03 PVD Gold
56133U03 PVD Rum
5A133P03 Antique PVD Champagne
5A133U03 Antique PVD Rum

Ø 25 cm h 47,5 cm
Ø 9 7/8 in., h 18 3/4 in.

For plates Per piatti
Ø 22 cm - Ø 8 5/8 in.

Elite holloware modern

Elite holloware modern



Round tray
Vassoio tondo
Ausstellplatte, rund
Plateau rond
Bandeja redonda

56026 18-10 S/S
55026 Silverplated S/S

- 30 outside Ø 30 cm - Ø 11³/₄ in.
inside Ø 25,5 cm - Ø 10 in.
- 35 outside Ø 35 cm - Ø 13³/₄ in.
inside Ø 31 cm - Ø 12³/₄ in.
- 40 outside Ø 40 cm - Ø 15³/₄ in.
inside Ø 35,5 cm - Ø 14 in.

55026G35 PVD Gold
55026U35 PVD Rum



Round tray with handles
Vassoio rettangolare
Ausstellplatte mit Griffen, rund
Plateau rond avec anses
Bandeja redonda con asas

56030 18-10 S/S
55030 Silverplated S/S

- 35 outside Ø 35 cm - Ø 13³/₄ in.
inside Ø 31 cm - Ø 12³/₄ in.
- 40 outside Ø 40 cm - Ø 15³/₄ in.
inside Ø 35,5 cm - Ø 14 in.

55030G35 PVD Gold
55030U35 PVD Rum



Rectangular tray
Vassoio rettangolare
Tablett, rechteckig
Plateau rectangulaire
Bandeja rectangular

56020 18-10 S/S
55020 Silverplated S/S
55020G PVD Gold
55020U PVD Rum

- 28 outside 28 x 20 cm - 11¹/₄ x 7³/₄ in.
inside 26 x 18 cm - 10¹/₄ x 7 in.
- 35 outside 35 x 30 cm - 13³/₄ x 11³/₄ in.
inside 31 x 27 cm - 12¹/₄ x 10³/₄ in.
- 40* outside 40 x 26 cm - 15³/₄ x 10³/₄ in.
inside 35 x 22 cm - 13³/₄ x 8³/₄ in.
- 50* outside 50 x 38 cm - 19¹/₂ x 15 in.
inside 44 x 32 cm - 17¹/₄ x 12¹/₂ in.
- 65* outside 65 x 50 cm - 25¹/₂ x 19¹/₂ in.
inside 58 x 42 cm - 22³/₈ x 16¹/₂ in.
- 85* outside 85 x 50 cm - 33¹/₂ x 19¹/₂ in.
inside 77 x 42 cm - 30³/₈ x 16¹/₂ in.
- 99* outside 100 x 50 cm - 39³/₄ x 19¹/₂ in.
inside 92 x 42 cm - 36³/₄ x 16¹/₂ in.

* Not available in PVD



Rectangular tray with handles
Vassoio rettangolare con maniglie
Ausstellplatte mit Griffen, rechteckig
Plateau rectangulaire avec anses
Bandeja rectangular con asas

56024 18-10 S/S
55024 Silverplated S/S
55024G PVD Gold
55024U PVD Rum

- 40 outside 40 x 26 cm - 15³/₄ x 10³/₄ in.
inside 35 x 22 cm - 13³/₄ x 8³/₄ in.
- 60 outside 50 x 38 cm - 19¹/₂ x 15 in.
inside 44 x 32 cm - 17¹/₄ x 12¹/₂ in.
- 85* outside 65 x 50 cm - 25¹/₂ x 19¹/₂ in.
inside 58 x 42 cm - 22³/₈ x 16¹/₂ in.
- 85* outside 85 x 50 cm - 33¹/₂ x 19¹/₂ in.
inside 77 x 42 cm - 30³/₈ x 16¹/₂ in.
- 99* outside 100 x 50 cm - 39³/₄ x 19¹/₂ in.
inside 92 x 42 cm - 36³/₄ x 16¹/₂ in.

* Not available in PVD

Elite holloware modern

Elite holloware modern



Round platter
Piatto tondo
Platte, rund
Plat rond
Plato redondo

56035 18-10 S/S
55035 Silverplated S/S

- 30 outside Ø 30 cm - Ø 12³/₄ in.
inside Ø 24 cm - Ø 9¹/₂ in.
- 35 outside Ø 35 cm - Ø 13³/₄ in.
inside Ø 27 cm - Ø 10³/₄ in.
- 40 outside Ø 40 cm - Ø 15³/₄ in.
inside Ø 31 cm - Ø 12³/₄ in.

66326 18-10 S/S
65326 Silverplated S/S

- 60 Ø 60 cm - Ø 24 in.
- 80 Ø 80 cm - Ø 31¹/₂ in.



Round tray for cassata, with handles
Vassoio tondo per cassata, con maniglie
Ausstellplatte für Cassata, rund, mit Griffen
Plateau rond pour cassate, avec anses
Bandeja redonda para cassata, con asas

56030-36 18-10 S/S
55030-36 Silverplated S/S

Ø 36 cm - Ø 14¹/₄ in.



Oval tray
Vassoio ovale
Tablett, oval
Plateau oval
Bandeja oval

56025-49 18-10 S/S
55025-49 Silverplated S/S

49 x 37 cm - 19¹/₄ x 14¹/₂ in.



Oval platter
 Piatto ovale
 Platte, oval
 Plat oval
 Plato oval

56041 18-10 S/S
55041 Silverplated S/S
55041G PVD Gold
55041U PVD Rum

- 30** outside 30 x 19 cm - 11¼ x 7½ in.
 inside 24 x 13 cm - 9½ x 5 in.
- 35** outside 35 x 22 cm - 13¾ x 8½ in.
 inside 28 x 16 cm - 11¼ x 6¼ in.
- 41** outside 41 x 26 cm - 16¼ x 10¼ in.
 inside 34 x 19 cm - 13¾ x 7½ in.
- 46*** outside 46 x 29 cm - 18¼ x 11½ in.
 inside 38 x 21 cm - 15¼ x 8½ in.
- 54*** outside 54 x 37 cm - 21¼ x 14½ in.
 inside 43 x 26 cm - 17¼ x 10¼ in.

* Not available in PVD

66325 18-10 S/S
65325 Silverplated S/S

- 85** 85 x 58 cm - 33¼ x 19¾ in.
- 99** 100 x 68 cm - 39½ x 26¾ in.



China insert for oval platter
 Porcellana per piatto ovale
 Porzellan für ovale Platte
 Porcelaine pour plat ovale
 Porcelana para plato oval

59906 Porcelain
 -**21** 21 x 11 cm - 8 x 4¼ in.
 -**25** 25,5 x 13 cm - 10 x 5 in.
 -**29** 29 x 15,5 cm - 11½ x 5¼ in.
 -**33** 33 x 17,5 cm - 13 x 8 in.



Soup tureen
 Zuppiera
 Suppenschüssel
 Soupière
 Sopera

56054 18-10 S/S
55054 Silverplated S/S

- 52** Ø 12 cm 35 cl. - Ø 6 in. 12 oz.
- 55** Ø 14,5 cm 70 cl. - Ø 7 in. 23 ½ oz.
- 58** Ø 17,5 cm 100 cl. - Ø 8 in. 34 oz.
- 61** Ø 20,5 cm 155 cl. - Ø 10 in. 52 ¾ oz.
- 65** Ø 25 cm 280 cl. - Ø 11 in. 94 ¾ oz.



Vegetable dish
 Legumiera
 Gemüseschüssel
 Légumier
 Legumbrera

56056 18-10 S/S
55056 Silverplated S/S

- 55** Ø 14,5 cm 55 cl. - Ø 7 in. 18 oz.
- 58** Ø 17,5 cm 90 cl. - Ø 8 in. 30 oz.
- 61** Ø 20,5 cm 140 cl. - Ø 10 in. 47 oz.
- 65** Ø 25 cm 240 cl. - Ø 11 in. 80 oz.



Escoffier vegetable dish, 1 compartment
 Legumiera Escoffier, 1 scomparto
 Escoffier-Gemüseschale, 1 Abteil
 Légumier Escoffier, 1 compartiment
 Legumbrera Escoffier, 1 compartimento

56060-01 18-10 S/S
55060-01 Silverplated S/S

- 40 x 27 cm - 450 cl.
- 15¼ x 10½ in. - 150 oz.



Escoffier vegetable dish, 2 compartments
 Legumiera Escoffier, 2 scomparti
 Escoffier-Gemüseschale, 2 Abteile
 Légumier Escoffier, 2 compartiments
 Legumbrera Escoffier, 2 compartimentos

56060-02 18-10 S/S
55060-02 Silverplated S/S

- 40 x 27 cm - 150 cl. x 2
- 15¼ x 10½ in. - 50 oz. x 2



Lid for Escoffier vegetable dish
 Coperchio per legumiera Escoffier
 Escoffier-Gemüseschaledeckel
 Couvercle pour légumier Escoffier
 Tapa para legumbrera Escoffier

56060-00 18-10 S/S
55060-00 Silverplated S/S

- 40 x 27 cm - 15¼ x 10½ in.



Fish dish
 Piatto pesce
 Fischplatte
 Plat à poisson
 Fuente pescado

56045 18-10 S/S
55045 Silverplated S/S

- 55** outside 55 x 23 cm - 21½ x 9 in.
 inside 47 x 16 cm - 18¼ x 6¼ in.
- 65** outside 65 x 27 cm - 25¼ x 10½ in.
 inside 56 x 18 cm - 22½ x 7 in.
- 74** outside 74 x 29 cm - 29½ x 11½ in.
 inside 65 x 20 cm - 25½ x 7¾ in.



Caviar set
 Caviar set
 Caviar set
 Caviar set
 Caviar set

56029-40 18-10 S/S

- Ø 40 cm - 15¾ in.



Caviar flatware
 Posate per caviale
 Kaviarbesteck
 Couverts à caviar
 Cubiertos para caviar

41518 Mother of pearl

- 00** Spoon - Cucchiaino
 11,4 cm - 4½ in.
- 01** Spatula - Spatolina
 10,2 cm - 4 in.
- 02** Fork - Forchettina
 11,4 cm - 4½ in.



Show plate
Piatto presentazione
Platzteller
Plat à présentation
Plato de presentación

56032 18-10 S/S
55032 Silverplated S/S

-**31** outside Ø 31 cm - Ø 12¼ in.
inside Ø 19,6 cm - Ø 7¾ in.
-**33** outside Ø 33 cm - Ø 13 in.
inside Ø 20,5 cm - Ø 8 in.



Show plate
Piatto presentazione
Platzteller
Plat à présentation
Plato de presentación

56033-31 18-10 S/S
55033-31 Silverplated S/S

Ø 31 cm - Ø 12¼ in.



Bottle stand
Sottobottiglia
Flaschenteller
Sous-bouteille
Platito bajo botellas

56112-12 18-10 S/S
55112-12 Silverplated S/S
56112G12 PVD Gold
55112U12 PVD Rum

Ø 12 cm - Ø 4¼ in.



Saucer
Sottobicchiere
Untersetzer
Sous-verre
Platito vasos

56112-09 18-10 S/S
55112-09 Silverplated S/S
56112G09 PVD Gold
55112U09 PVD Rum

Ø 9 cm - Ø 3½ in.



Underliner
Sottocoppa
Unterteller
Sous-coupe
Platillo

56112 18-10 S/S
55112 Silverplated S/S

-**14** Ø 14 cm - Ø 5½ in.
-**17** Ø 17 cm - Ø 6½ in.
-**24** Ø 24 cm - Ø 9 in.



Round plate cover
Copripiatto tondo
Speiseglocke, rund
Cloche ronde
Cubreplatos, redondo

56039 18-10 S/S

-**19** Ø 19 cm - Ø 7½ in.
-**20** Ø 20 cm - Ø 7¾ in.
-**24** Ø 24 cm - Ø 9½ in.
-**25** Ø 25 cm - Ø 9¾ in.
-**26** Ø 26 cm - Ø 10¼ in.
-**26** Ø 26,5 cm - Ø 10½ in.
-**27** Ø 27 cm - Ø 10½ in.
-**27** Ø 27,5 cm - Ø 10¾ in.
-**28** Ø 28 cm - Ø 11 in.
-**28** Ø 28,5 cm - Ø 11¼ in.
-**29** Ø 29 cm - Ø 11½ in.
-**29** Ø 29,5 cm - Ø 11¾ in.
-**30** Ø 30 cm - Ø 11¾ in.
-**31** Ø 31 cm - Ø 12¼ in.
-**32** Ø 32 cm - Ø 12½ in.
-**33** Ø 33,5 cm - Ø 13½ in.

55039 Silverplated S/S

-**20** Ø 20 cm - Ø 7¾ in.
-**24** Ø 24 cm - Ø 9½ in.
-**25** Ø 25 cm - Ø 9¾ in.
-**26** Ø 26 cm - Ø 10¼ in.



Cover for round dish
Copripiatto per piatto tondo
Speiseglocke für runde Platte
Cloche pour plat rond
Cubreplatos, redondo

56038 18-10 S/S
55038 Silverplated S/S

Suitable for - Adatto a:
-**30** Ø 24,5 cm - Ø 9½ in. → 56035-30 / 55035-30
-**35** Ø 28,5 cm - Ø 11¼ in. → 56035-35 / 55035-35
-**40** Ø 32,5 cm - Ø 12¾ in. → 56035-40 / 55035-40



Dome cover, round
Cloche tonda
Speiseglocke, rund
Cloche ronde
Cúpula redonda

56037 18-10 S/S
55037 Silverplated S/S

-**19** Ø 18,5 cm - Ø 7¼ in.
-**22** Ø 22 cm - Ø 8½ in.
-**23** Ø 24 cm - Ø 9½ in.
-**26** Ø 26 cm - Ø 10¼ in.
-**28** Ø 29 cm - Ø 11½ in.

5A037P23 Antique PVD Champagne
5A037U23 Antique PVD Rum



Finger bowl
Coppa lavadita
Fingerschale
Rince doigts
Bol para limpiar dedos

56101-11 18-10 S/S
55101-11 Silverplated S/S
56101G11 PVD Gold
55101U11 PVD Rum

Ø 11 cm - Ø 4¼ in.



Bread basket
Cestino pane
Brotkorb
Corbeille à pain
Cesta pan

56092 18-10 S/S
55092 Silverplated S/S

-**24** 24 x 15 cm. - 9 x 6 in.
-**30** 30 x 19 cm. - 12 x 7½ in.



Cash tray
Vassoio conto
Rechnungstablett
Plateau à monnaie
Bandeja cuentas y propinas

56018-22 18-10 S/S
55018-22 Silverplated S/S
55018G22 PVD Gold
55018U22 PVD Rum
5A018P22 Antique PVD Champagne
5A018U22 Antique PVD Rum

22 x 15 cm - 8½ x 6 in.



Candlestick
Candelieri
Kerzenleuchter
Chandelier
Candelabro una vela

56125 18-10 S/S
55125 Silverplated S/S

-**25** h 25 cm - h 10 in.
-**33** h 33 cm - h 13 in.



Flambé burner
Fornello crêpes
Flambier-rechaud
Réchaud à flamber
Calentador para flambear

56162-00 18-10 S/S
55162-00 Silverplated S/S

Ø 28 cm - h 18,5 cm
Ø 10¼ in. - h 7¼ in.





Ice cream cup
Coppa gelato
Eisbecher
Coupe à glace
Copa helado

56107-10 18-10 S/S
56107-10 Silverplated S/S

Ø 10,5 cm - Ø 4 in.



Cup with foot
Coppa con piede
Schale auf Fuß
Coupe sur pied
Copa con base

56109-13 18-10 S/S
56109-13 Silverplated S/S
55109G13 PVD Gold
55109U13 PVD Rum

Ø 13 cm - Ø 5 in.



Soup cup
Coppa crema / potage
Suppenschale
Coupe à creme / potage
Copa gazpacho / potage

56110-05 18-10 S/S
56110-05 Silverplated S/S

Ø 13 cm - Ø 5 in.



Grated cheese pot
Formaggiara
Käsedose
Ravier à parmesan
Quesera

56079-01 18-10 S/S
56079-01 Silverplated S/S

Ø 13,8 cm - Ø 5 in.



Mustard pot
Senaggiara
Senfschale
Moutardier
Mostacero

56081-01 18-10 S/S
56081-01 Silverplated S/S

Ø 6,5 cm h 8 cm - Ø 2½ in. h 3 in.



Butter dish with cover
Burriera con cloche
Butterdose mit Deckel
Beurrier avec cloche
Mantequillera con cúpula

56104-09 18-10 S/S
56104-09 Silverplated S/S

Ø 9 cm - Ø 3½ in.



Vichyssoise cup
Coppa Vichyssoise
Vichyssoise Schale
Coupe à vichyssoise
Copa vichyssoise

56110-09 18-10 S/S
56110-09 Silverplated S/S

Ø 13 cm - Ø 5 in.



Supreme cup
Coppa cocktail scampi
Hummer- / Cocktailschale
Coupe à suprême
Copa cóctel camarones

56110-07 18-10 S/S
56110-07 Silverplated S/S

Ø 13 cm - Ø 5 in.



Supreme cup with crystal
Coppa cocktail scampi con cristallo
Hummer- / Cocktailschale mit Kristalleinsatz
Coupe à suprême avec cristal
Copa cóctel camarones con cristallo

56110-08 18-10 S/S
56110-08 Silverplated S/S

Ø 13 cm - Ø 5 in.



Caviar cup
Coppa caviale
Kaviarkühler
Coupe à caviar
Copa caviar

56110-04 18-10 S/S
56110-04 Silverplated S/S

Ø 13 cm - Ø 5 in.



Oyster plate with crystal
Piatto ostriche con cristallo
Austernplatte mit Kristalleinsatz
Plat à huîtres avec cristal
Plato ostras con cristal

56048-01 18-10 S/S
56048-01 Silverplated S/S

Ø 31 cm - Ø 12¼ in.



Escargot plate
Piatto lumache
Schneckenplatte
Plat à escargots
Plato caracoles

56049 18-10 S/S
56049 Silverplated S/S

-06 Ø 25 cm - Ø 10 in. → 6 snails - 6 lumache
-12 Ø 31 cm - Ø 12¼ in. → 12 snails - 12 lumache



Butter dish
Burriera
Butterdose
Beurrier
Mantequillera

56104-51 18-10 S/S
56104-51 Silverplated S/S

Ø 13 cm - Ø 5 in.



Butter dish
Burriera
Butterdose
Beurrier
Mantequillera

56110-02 18-10 S/S
56110-02 Silverplated S/S

Ø 13 cm - Ø 5 in.



Oval sauce boat
Salsiera ovale
Saucière, oval
Saucière ovale
Salsiera oval

56085 18-10 S/S
55085 Silverplated S/S

-17 15 cl. - 5 oz.
-24 24 cl. - 8 oz.
-42 42 cl. - 14 oz.



Oval sauce boat with handle
Salsiera ovale con manico
Saucière, oval, mit Griff
Saucière ovale avec anse
Salsiera oval con asa

56087 18-10 S/S
55087 Silverplated S/S

-20 20 cl. - 7 oz.
-40 40 cl. - 13 3/4 oz.



Table number
Numero da tavola
Tischnummer
Número de table
Número de mesa

56098-08 18-10 S/S
55098-08 Silverplated S/S

7,4 x 4 cm - 3 x 1 1/2 in.

Engraving on request
Incisione a richiesta



Table number holder
Portanumero da tavola / segnaposto
Tischnummern-Aufsteller
Porte numéro de table
Porta número de mesa

56099-06 18-10 S/S
55099-06 Silverplated S/S

11 x 6 cm - 4 1/4 x 2 3/8 in.



Salt shaker
Spargisale
Salzstreuer
Salière
Salero

54067-01 18-10 S/S
53067-01 Silverplated S/S

h 8 cm - h 3 1/8 in.



Pepper shaker, 1 hole
Spargipepe, 1 foro
Pfefferstreuer, 1 Loch
Poivrier, 1 trou
Pimentero, 1 agujero

54068-01 18-10 S/S
53068-01 Silverplated S/S

h 8 cm - h 3 1/8 in.



Toothpick holder
Portastecchi
Zahnstocherträger
Porte cure-dents
Pallero

54071-01 18-10 S/S
53071-01 Silverplated S/S

h 8 cm - h 3 1/8 in.



Cruet set, 4 pcs
Servizio menage, 4 pz
Menage, 4-tlg
Ménagère, 4 pcs
Servicio de mesa, 4 pz

56065-04 18-10 S/S
55065-04 Silverplated S/S

h 20,5 cm - Ø 19 cm
h 8 in. - Ø 7 1/2 in.



Oil & vinegar set, 2 pcs
Servizio olio e aceto, 2 pz
Essig- / Ölgestell, 2-tlg
Huïller / vinaigrier, 2 pcs
Servicio de mesa, 2 pz

56063-02 18-10 S/S
55063-02 Silverplated S/S

h 20,5 cm - 19 x 10,5 cm
h 8 in. - 7 1/2 x 4 in.



Table number stand with clip
Supporto per numero da tavola a molla
Tischnummernständer mit Clip
Support pour numéro de table avec clip
Soporte para número de mesa con clip

56164-40 18-10 S/S
55164-40 Silverplated S/S

h 40 cm - h 15 3/4 in.

Number not included Numero escluso



Table number stand
Supporto per numero da tavola
Tischnummernständer
Support pour numero de table
Soporte para numero de mesa

56161-00 18-10 S/S
55161-00 Silverplated S/S

h 43 cm - h 17 in.

Number not included Numero escluso

Table stand number
Numero da tavola per supporto
Ständertischnummer
Número pour support de table
Número para soporte de mesa

56161 18-10 S/S

Ø 15 cm - Ø 6 in.

Lacquered numbers Numeri verniciati

Numbers from 1 to 75
Example N° 52 code 56161-52
Numeri da 1 a 75
Esempio n° 52 art. 56161-52



Ice bucket
Secchio ghiaccio
Eisbehälter
Seau à glace
Cubitera hielo

56115 18-10 S/S
55115 Silverplated S/S

-16 h 15 cm - Ø 16,4 cm
h 6 in. - Ø 6½ in.
-18 h 15 cm - Ø 18 cm
h 6 in. - Ø 7 in.



Ice bucket
Secchio ghiaccio
Eisbehälter
Seau à glace
Cubitera hielo

56116-15 18-10 S/S
55116-15 Silverplated S/S
55116G15 PVD Gold *
55116U15 PVD Rum *

h 13 cm - Ø 12,5 cm
h 5 in. - Ø 4¾ in.

* Handles not in PVD



Insulated ice bucket
Secchio ghiaccio termico
Eisbehälter, isoliert
Seau à glace, isotherme
Cubitera térmica

56114-16 18-10 S/S

h 20 cm - Ø 16 cm
h 8¼ in. - Ø 7¼ in.



Wine cooler
Secchio vino
Weinkühler
Seau à vin
Cubo vino

new **56117-26** 18-10 S/S
new **55117-26** Silverplated S/S

26x21 cm - h 19,5 cm
10 ½x8 ¼ in. - h 7¾ in.



Wine cooler
Secchio vino
Weinkühler
Seau à vin
Cubo vino

new **56117-44** 18-10 S/S
new **55117-44** Silverplated S/S

44x35,5 cm - h 19,5 cm
17 ½x14 in. - h 7¾ in.

Elite holloware modern



Wine cooler
Secchio spumante
Weinkühler
Seau à champagne
Cubitera de champña

56117-23 18-10 S/S
55117-23 Silverplated S/S
55117G23 PVD Gold
55117U23 PVD Rum
5A117P23 Antique PVD Champagne
5A117U23 Antique PVD Rum

h 24,5 cm Ø 23 cm - h 9½ in. - Ø 9 in.



White wine cooler
Secchio vino bianco
Weissweinkühler
Seau à vin blanc
Cubo vino blanco

56118-20 18-10 S/S
55118-20 Silverplated S/S
55118G20 PVD Gold *
55118U20 PVD Rum *

h 25 cm Ø 20 cm - h 9¾ in. - Ø 7¾ in.

* Handles not in PVD



Wine cooler
Secchio spumante
Weinkühler
Seau à champagne
Cubitera de champña

56120 18-10 S/S
55120 Silverplated S/S
55120G PVD Gold *
55120U PVD Rum *

1/2 h 18 h 16 cm Ø 18,5 cm - h 6¼ in. - Ø 7¼ in.
-22 h 21 cm Ø 20 cm - h 8 in. - Ø 7¾ in.
-24 h 22 cm Ø 24 cm - h 8½ in. - Ø 9½ in.

* Handles not in PVD

Elite holloware modern



Wine cooler stand
Supporto secchio vino
Weinkühlerständer
Support pour seau à vin
Soporte cubo vino

new **56122-59** 18-10 S/S
new **55122-59** Silverplated S/S

h 59 cm - h 23¼ in.

Suitable for Adatto a:
Elite 56117-26
55117-26

Contour 53117-26



Wine cooler stand
Supporto secchio spumante
Weinkühlerständer
Support seau à champagne
Soporte cubo de champaña

56119-63 18-10 S/S
55119-63 Silverplated S/S
55119G63 PVD Gold
55119U63 PVD Rum
5A119P63 Antique PVD Champagne
6A119U63 Antique PVD Rum

h 63 cm - h 24 3/4 in.

Suitable for Adatto a:
Elite 56117-23
56118-20
56120-18
56120-22
56120-24



Wine cooler stand
Supporto secchio spumante
Weinkühlerständer
Support seau à champagne
Soporte cubo de champaña

56121-68 18-10 S/S
55121-68 Silverplated S/S

h 68 cm - h 26 3/4 in.

Suitable for Adatto a:
Elite 56117-23
56118-20
56120-18
56120-22



Juice cooler
Rinfresca succo
Saftkühler
Rafraîchisseur à jus
Enfriador para jugo

56124-09 18-10 S/S
55124-09 Silverplated S/S

Ø ext. 9,5 cm Ø int. 8 cm h 7,5 cm
Ø ext. 3 3/4 in. Ø int. 3 1/4 in. h 3 in.



Wine holder
Versavino reversibile
Weingestell
Porte bouteille
Soporte para botella

56123-00 18-10 S/S
55123-00 Silverplated S/S

h 14,5 cm - h 5 1/2 in.

1/2 & 1/2 **Suitable for both 1/2 and 1 bottle**
Adatto per 1/2 e 1 bottiglia



Punch ladle
Mestolo punch
Punch-Schöpfkelle
Louche à punch
Cucharón para punch

62706-42 Silverplated S/S

42 cm - 16 1/2 in.



Punch bowl
Coppa punch
Champagnerkühler
Coupe à punch
Ponchera

56144 18-10 S/S
55144 Silverplated S/S

-37 Ø 37 cm 9,5 L - Ø 14 1/2 in. 2,5 gal.
-42 Ø 42 cm 15 L - Ø 16 1/2 in. 4 gal.



Punch bowl
Coppa punch
Champagnerkühler
Coupe à punch
Ponchera

56143-20 18-10 S/S
55143-20 Silverplated S/S

Ø 45 cm 20 L - Ø 17 1/2 in. 5 gal.



hollowware design

Sphera



reddot design award



Innovative design, shape, materials, concept, performance and esthetic come together in Sphera's round and symmetric forms. Coffee line, pitchers, vases and glacettes have in common the elegance and taste typical of Sambonet. A modern collection that gives stainless steel a new form.

Design innovativo, forma, materiale, concetto, performance ed estetica si riuniscono nelle forme tondeggianti e simmetriche di Sphera. La linea di caffetteria, le brocche, i vassoi e le glacette hanno come comune denominatore l'eleganza e il gusto proprio di Sambonet. Una collezione moderna che dona all'acciaio nuove forme.

hollowware design

Sphera



Sugar bowl
Zuccheriera
Zuckerdose
Sucrier
Azucarero

56910-02 18-10 S/S
56910-02 Silverplated S/S
56910U02 PVD Rum
56910G02 PVD Gold

200 gr. - 7 oz.



Creamer
Cremiera
Gießer
Crémier
Jarrita

56904-01 18-10 S/S
56904-01 Silverplated S/S
56904U01 PVD Rum
56904G01 PVD Gold

15 cl. - 5½ oz.



Milk pot
Lattiera
Milchkanne
Pot à lait
Jarra leche

56906 18-10 S/S
56906 Silverplated S/S
56906U03 PVD Rum
56906G03 PVD Gold

-03 30 cl. - 11 oz.
-06 60 cl. - 21½ oz.*

* Not available in PVD



Napkin holder
Legatovagliolo
Serviettenring
Porte serviette
Servilletero

56994-00 18-10 S/S
56994-00 Silverplated S/S
56994B00 PVD Black
56994G00 PVD Gold
56994P00 PVD Champagne
56994U00 PVD Rum

Ø 5 cm h 3,5 cm - Ø 2 in. h 1⅜ in.



Tea pot
Teiera
Teekanne
Théière
Tetera

56908 18-10 S/S
56908 Silverplated S/S
56908U PVD Rum
56908G PVD Gold

-03 30 cl. - 11 oz.
-06 60 cl. - 21½ oz.*

* Not available in PVD



Coffee pot
Caffettiera
Kaffeekanne
Cafetière
Cafetera

56901 18-10 S/S
56901 Silverplated S/S
56901U PVD Rum
56901G PVD Gold

-03 30 cl. - 11 oz.*
-06 60 cl. - 21½ oz.
-10 100 cl. - 33½ oz.
-15 150 cl. - 50¾ oz.

* Not available in PVD



Show plate
Piatto presentazione
Platzteller
Plat à présentation
Plato de presentación

56931-32 18-10 S/S
56931-32 Silverplated S/S
54931-32 Diamond
54931P32 White Gold Diamond
54931N32 Red Gold Diamond
56931B32 PVD Black
56931G32 PVD Gold
56931P32 PVD Champagne
56931U32 PVD Rum

Ø 32 cm - Ø 12½ in.



Water pitcher
Brocca acqua
Eiswasserkrug
Carafe à eau
Jarra agua

56915-20 18-10 S/S
56915-20 Silverplated S/S

200 cl. - 67½ oz.



Water pitcher with ice guard
Brocca acqua con fermaghiaccio
Wasserkrug mit Eislippe
Carafe à eau avec arrêt pour glace
Jarra agua con reja hielo

56915-15 18-10 S/S
56915-15 Silverplated S/S
56915U15 PVD Rum
56915G15 PVD Gold

150 cl. - 50¾ oz.

56916-20 18-10 S/S
56916-20 Silverplated S/S

200 cl. - 67½ oz.

Hotel & Restaurant Service

sambonet





★ **Bowl**
Ciotola
Universalschale
Bol universel
Copa

56591-12 18-10 S/S
55591-12 Silverplated S/S
55591U12 PVD Rum
55591G12 PVD Gold
55591P12 PVD Champagne

Ø 12 cm - Ø 4¾ in.



★ **Bowl / round tray**
Ciotola / vassoio rotondo
Universalschale / Ausstellplatte, rund
Bol universel / plateau rond
Copa / bandeja redonda

→ With handles - Con maniglie
56591-32 18-10 S/S
55591-32 Silverplated S/S

→ Without handles - Senza maniglie
56591-33 18-10 S/S
55591U33 PVD Rum
55591G33 PVD Gold
55591P33 PVD Champagne

Ø 32 cm - Ø 12¾ in.



★ **Bowl / round tray**
Ciotola / vassoio rotondo
Universalschale / Ausstellplatte, rund
Bol universel / plateau rond
Copa / bandeja redonda

→ With handles - Con maniglie
56591-24 18-10 S/S
55591-24 Silverplated S/S

→ Without handles - Senza maniglie
56591-25 18-10 S/S
55591U25 PVD Rum
55591G25 PVD Gold
55591P25 PVD Champagne

Ø 24 cm - Ø 9½ in.



★ **Round tray**
Vassoio tondo
Ausstellplatte, rund
Plateau rond
Bandeja redonda

→ With handles - Con maniglie
56595-40 18-10 S/S
55595-40 Silverplated S/S

→ Without handles - Senza maniglie
56595-41 18-10 S/S
55595U41 PVD Rum
55595G41 PVD Gold
55595P41 PVD Champagne

Ø 40 cm - Ø 15¾ in.

★ Silicone disc included / Disco in silicone incluso



Sphera Bar selection



Wine cooler
Secchio vino
Weissweinkühler
Seau à vin
Cubo vino

56598-00 18-10 S/S
56598-00 Silverplated S/S
55598U00 PVD Rum
55598G00 PVD Gold
55598P00 PVD Champagne

22 x 17 cm h 19 cm - 8⁵/₈ x 8¹/₂ in., h 7¹/₂ in.



Cocktail shaker
Cocktail shaker
Cocktailshaker
Shaker
Coctelera

56572-00 18-10 S/S
56572-00 Silverplated S/S

Ø 8,5 cm h 23 cm - Ø 3¹/₈ in., h 9 in.



Insulated wine cooler
Giacette termica
Flaschenkühler
Rafraichisseur à bouteille
Enfriador de botella

56594-00 18-10 S/S
56594-00 Silverplated S/S
55594U00 PVD Rum
55594G00 PVD Gold
55594P00 PVD Champagne

Ø 10 cm h 18 cm - Ø 3⁷/₈ in., h 7¹/₈ in.



Boston shaker
Shaker Boston
Boston Shaker
Boston shaker
Coctelera con vaso

56572-01 18-10 S/S
56572-01 Silverplated S/S

Ø 9 cm h 17 cm - Ø 3¹/₂ in., h 6³/₄ in.



Wine cooler stand
Supporto secchio vino
Ständer für Weinkühler
Support pour seau à vin
Soporte para cubitera

56755-20 18-10 S/S
56755-20 Silverplated S/S

h 61,8 cm - h 24³/₈ in.



Insulated ice bucket
Secchio ghiaccio termico
Eisbehälter, isoliert
Seau à glace, isotherme
Cubitera térmica

56596-00 18-10 S/S
56596-00 Silverplated S/S
55596U00 PVD Rum
55596G00 PVD Gold
55596P00 PVD Champagne

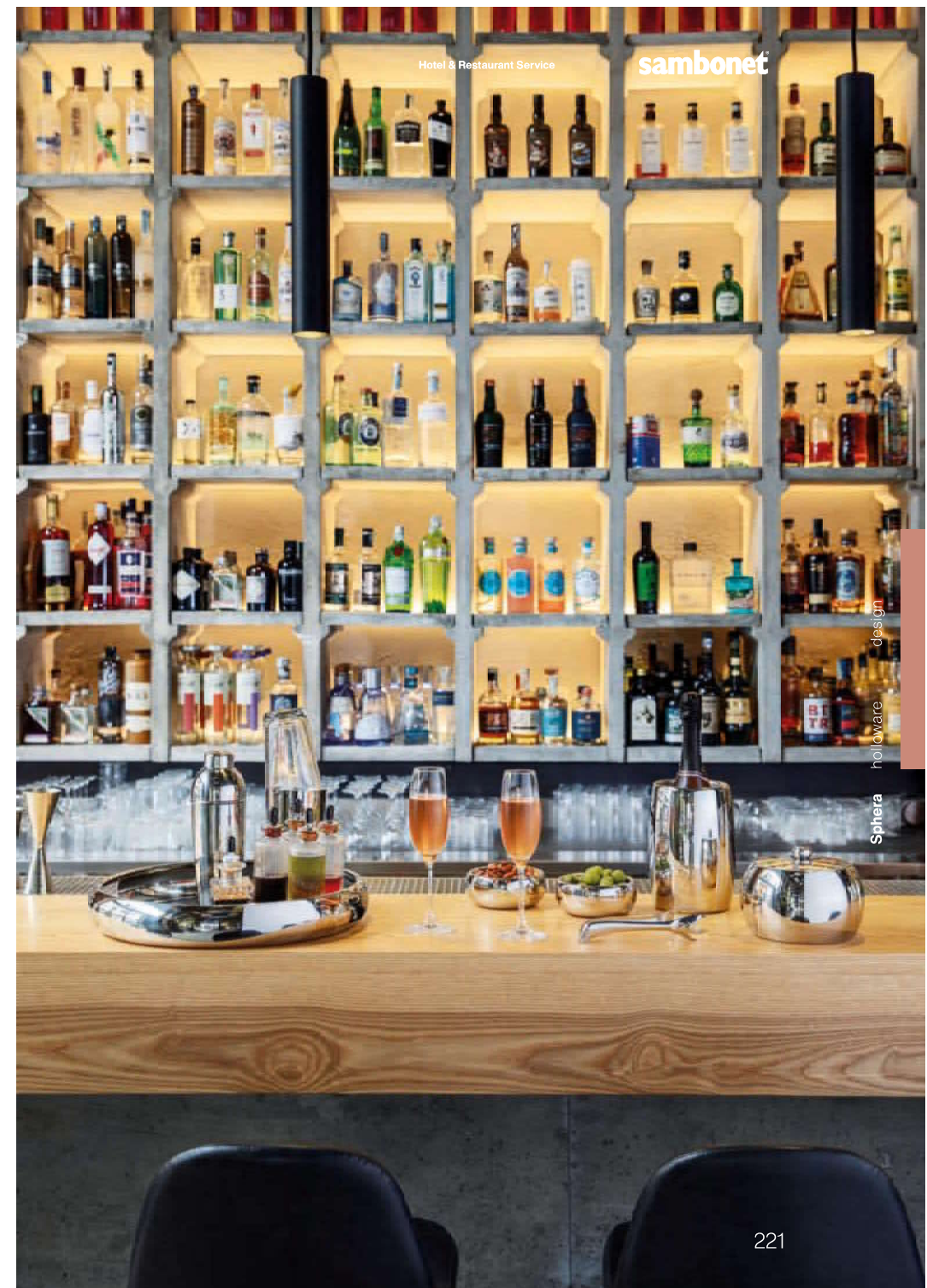
Ø 12 cm h 10 cm - Ø 4³/₈ in., h 3⁵/₈ in.



French shaker
Shaker French
French Shaker
French shaker
Coctelera con vaso

56572-02 18-10 S/S
56572-02 Silverplated S/S

Ø 10 cm h 23,5 cm - Ø 3¹/₈ in., h 9¹/₄ in.



Hotel & Restaurant Service

sambonet

Sphera holloware design

Sphera holloware design



holloware design

Bamboo

The sleek and the contemporary oval section give Bamboo collection the harmony typical of 1940s organic design. Bamboo is a coffee and bar line, which includes a number of table accessories. It is characterized by the uniqueness of the forms and originality of the handle details. A perfect example of when design aligns itself with functionality and practicality.

La linea slanciata e la contemporaneità della sezione ovale dona a Bamboo l'armonia tipica del design organico degli anni '40. Una linea di caffetteria e bar, oltre a una serie di complementi tavola e accessori, caratterizzata dall'unicità delle sue forme e dall'originalità dei dettagli della lavorazione. Un'interpretazione in cui il design sposa ergonomia e praticità.

holloware design

Bamboo

Hotel & Restaurant Service

sambonet



Coffee pot
Caffettiera
Kaffeekanne
Cafetière
Cafetera

56701 18-10 S/S
55701 Silverplated S/S

-**03** 27 cl. - 9½ oz.
-**06** 52 cl. - 18½ oz.
-**09** 72 cl. - 25½ oz.
-**16** 160 cl. - 56½ oz.



Tea pot
Teiera
Teekanne
Théière
Tetera

56708 18-10 S/S
55708 Silverplated S/S

-**03** 21 cl. - 7¼ oz.
-**05** 40 cl. - 14 oz.
-**12** 100 cl. - 35½ oz.



Creamer
Cremiera
Gießler
Crémier
Jarrita

56704-01 18-10 S/S
55704-01 Silverplated S/S

11 cl. - 4 oz.



Bowl
Ciotolina
Schale
Coupelle
Copita

56777-10 18-10 S/S
55777-10 Silverplated S/S

Ø 10 cm - Ø 3¼ in.



Bread basket
Cestino pane
Brotkorb
Corbelle à pain
Cesta pan

56775-20 18-10 S/S
55775-20 Silverplated S/S

Ø 20 cm - Ø 7⅞ in.



Milk pot
Lattiera
Milchkanne
Pot à lait
Jarra leche

56706 18-10 S/S
55706 Silverplated S/S

-**03** 25 cl. - 8¾ oz.
-**06** 54 cl. - 19 oz.
-**09** 72 cl. - 25½ oz.



Water pitcher with ice guard
Brocca acqua con fermagiaccio
Wasserkrug mit Eislippe
Carafe à eau avec arrêt pour glace
Jarra agua con reja hielo

56715-16 18-10 S/S
55715-16 Silverplated S/S

160 cl. - 56½ oz.

56716-20 18-10 S/S
55716-20 Silverplated S/S

200 cl. - 67½ oz.



Cash tray
Vassolo conto
Rechnungstablett
Plateau à monnaie
Bandeja cuentas y propinas

56718-22 18-10 S/S
55718-22 Silverplated S/S

22 x 14 cm - 8⅞ x 5½ in.



Toast rack
Porta toast
Toastständer
Support pour toast
Porta tostadas

56757-06 18-10 S/S
55757-06 Silverplated S/S

14 x 9 cm h 13 cm - 5½ x 3½ in., h 5¼ in.

6 toasts - 6 toast



Napkin holder
Portatovaglioli
Serviettenhalter
Porte serviettes
Servilletero

56756-00 18-10 S/S
55756-00 Silverplated S/S

14 x 4 cm h 7,5 cm - 5½ x 1½ in., h 3 in.



Sugar bowl
Zuccheriera
Zuckerdose
Sucrier
Azucarero

56710-02 18-10 S/S
55710-02 Silverplated S/S

20 cl. - 7 oz.



Butter dish with cover
Barriera con cloche
Butterdose mit Deckel
Beurrier avec cloche
Mantequillera con cúpula

56770-00 18-10 S/S
55770-00 Silverplated S/S

9,5 x 7 cm 30 ml. - 3¼ x 2¾ in. 1 oz.



Sauce bowl
Portasalsa
Saucenschale
Bol à sauce
Copa salsa

56769-00 18-10 S/S
55769-00 Silverplated S/S

Ø 5 cm 40 ml. - Ø 2 in. 1¼ oz.



Flower vase
Vasetto fiori
Blumenvase
Vase à fleurs
Florero

56765-00 18-10 S/S
55765-00 Silverplated S/S

h 18 cm - h 7⅞ in.

Bamboo holloware design

Bamboo holloware design

Bamboo



Bamboo hollowware design

Hotel & Restaurant Service

sambonet



Wine cooler
 Secchio vino
 Weinkühler
 Seau à vin
 Cubo vino

56754-20 18-10 S/S
55754-20 Silverplated S/S

h 20,3 cm 24 x 19,5 cm
 h 8 in. 9¹/₁₆ x 7¹/₁₆ in.



Insulated wine cooler
 Glacette termica
 Flaschenkühler
 Rafrachisseur à bouteille
 Enfriador de botella

56751-09 18-10 S/S
55751-09 Silverplated S/S

h 21,2 cm 15 x 12 cm
 h 8¹/₁₆ in. 5¹/₁₆ x 4¹/₁₆ in.



Insulated ice bucket
 Secchio ghiaccio termico
 Eisbehälter, isoliert
 Seau à glace, isotherme
 Cubitera térmica

56752-16 18-10 S/S
55752-16 Silverplated S/S

h 14,2 cm 16,4 x 12,7 cm
 h 5¹/₁₆ in. 6¹/₁₆ x 5 in.



Bottle stopper
 Capribottiglia
 Stopfen
 Bouchon
 Tapón

56796-00 18-10 S/S
55796-00 Silverplated S/S

h. 6,5 cm - h 2¹/₁₆ in.



Cocktail shaker
 Cocktail shaker
 Cocktailshaker
 Shaker
 Coctelera

56772-00 18-10 S/S
55772-00 Silverplated S/S

47 cl. - 16¹/₂ oz.



Wine cooler stand
 Supporto secchio vino
 Weinkühlerständer
 Support pour seau à vin
 Soporte para cubo vino

56755-20 18-10 S/S
55755-20 Silverplated S/S

h 61,8 cm - h 24¹/₁₆ in.

Bamboo hollowware design



design

holloware

Linea Q

Refined, innovative and timeless design characterizes Sambonet style. This entire concept plays with square and rectangular forms made up of interchanging edges and curves.

Un design raffinato, innovativo e senza tempo che connota lo stile Sambonet. L'intero concept gioca con le forme quadrate e rettangolari, caratterizzate da un alternarsi di spigoli e linee arrotondate.

holloware design



Grated cheese pot
Formaggiera
Käsedose
Ravier à parmesan
Quesera

56525-01 18-10 S/S
56525-01 Silverplated S/S
12,5 x 12,5 cm - 5 x 5 in.



Saucer
Piattino
Untersatz
Petit sous plat
Platillo

56522-12 18-10 S/S
56522-12 Silverplated S/S
12 x 12 cm - 4 3/4 x 4 3/4 in.



Show plate
Sottopiatto
Platzteller
Plat à présentation
Plato de presentación

56521-28 18-10 S/S
56521-28 Silverplated S/S
28 x 28 cm - 11 x 11 in.



Show plate
Sottopiatto
Platzteller
Plat à présentation
Plato de presentación

56521-30 18-10 S/S
56521-30 Silverplated S/S
30 x 30 cm - 11 3/4 x 11 3/4 in.



Square bowl
Ciotolina quadrata
Universalschale, viereckig
Coupelle carrée
Copita cuadrada

56527-12 18-10 S/S
56527-12 Silverplated S/S
5527G12 PVD Gold
56527U12 PVD Rum
5A527P12 Antique PVD Champagne
5A527U12 Antique PVD Rum
12 x 12 cm - 4 3/4 x 4 3/4 in.



Bread basket
Cestino pane
Brotkorb
Corbelle à pain
Cesta pan

56530 18-10 S/S
56530 Silverplated S/S
-24 24 x 12 cm - 9 1/2 x 4 3/4 in.
-30 30 x 12 cm - 11 3/4 x 4 3/4 in.
55530G24 PVD Gold
55530U24 PVD Rum
5A530P30 Antique PVD Champagne
5A530U30 Antique PVD Rum



Rectangular tray
Vassoio rettangolare
Tablett, rechteckig
Plateau rectangulaire
Bandeja rectangular

56520 18-10 S/S
56520 Silverplated S/S
-43 outside - esterno: 43 x 28 cm - 17 x 11 in.
inside - interno: 31 x 21,5 cm - 12 1/4 x 8 3/4 in.
-62 outside - esterno: 52 x 33 cm - 20 1/2 x 13 in.
inside - interno: 38 x 25 cm - 15 x 9 3/4 in.
56520G43 PVD Gold
56520U43 PVD Rum



Square tray "Foglio"
Vassoio quadrato "Foglio"
Tablett "Foglio", quadratisch
Plateau carré "Foglio"
Bandeja cuadrada "Foglio"

56518-25 18-10 S/S
56518-25 Silverplated S/S
24 x 24 cm - 9 1/2 x 9 1/2 in.



Fruit bowl / bread basket
Fruttiera / cestino pane
Obst- / Brotkorb
Corbelle à fruits / pain
Cesta fruta / pan

56526-24 18-10 S/S
56526-24 Silverplated S/S
56526G24 PVD Gold
56526U24 PVD Rum
5A526P24 Antique PVD Champagne
5A526U24 Antique PVD Rum
24 x 24 cm - 9 1/2 x 9 1/2 in.



Fruit plate "Goccia"
Fruttiera "Goccia"
Obstkorb "Goccia"
Corbelle à fruits "Goccia"
Cesta fruta "Goccia"

56519-46 18-10 S/S
56519-46 Silverplated S/S
56519G46 PVD Gold
56519U46 PVD Rum
46 x 15,3 cm - 18 x 6 in.



hollowware design

Infinity

An exclusive collection to inspire chefs and suggest new concepts for service at the table. Stands, pliers, wine buckets and cloches: the stylistic research carried out by the Centro Stile Sambonet offers new ideas for contemporary dining, both for the display of courses and for the concept of new culinary proposals.

Una collezione esclusiva per ispirare e suggerire nuovi concetti di servizio a tavola. Alzate, pinze, secchi vino e cloche: la ricerca stilistica del Centro Stile Sambonet offre nuovi spunti per la ristorazione contemporanea, sia per la fase di presentazione delle portate che per l'ideazione di nuove proposte culinarie.

hollowware design



LIVING
Pliers "the extra cutlery"
 Pinza "la posata in più"
 Zange "das zusätzliche Besteck"
 Pincers "les couverts en plus"
 Alicates "la cubertería extra"

52550-72 18-10 S/S
52750-72 Silverplated
52750Q72 PVD Gold

h 22 cm - 8 5/8 in.



LIVING
Double canapé spoon
 Cucchiaino canapé doppio
 Doppelter Kanapee-Löffel
 Cuillère à canapé double
 Cuchara doble para canapés

52550-76 18-10 S/S
52750-76 Silverplated
52750Q76 PVD Gold

h 5,8 cm - h 2 1/4 in.

* 6 PCS PACK



GIO PONTI
Miniatura/Single-serve
 Miniatura/Monoporzione
 Miniatur/Single-Serve
 Miniatura/Single-serve
 Miniatura/Porción individual

56561-11 18-10 S/S
55561-11 Silverplated S/S

Ø 11 cm h 12,5 cm - Ø 4 1/8 in., h 4 7/8 in.

55561K11 PVD 2Black
55561Q11 PVD Gold
55561P11 PVD Champagne
55561U11 PVD Rum



PENELOPE
Dome cover
 Cloche
 Speiseglocke
 Cloche
 Cubreplatos

56573-B6 18-10 S/S
55573-B6 Silverplated
55573QB6 PVD Gold

Ø 11 cm - Ø 4 3/8 in

Resin, Obsidian Black.



PENELOPE
Dome cover
 Cloche
 Speiseglocke
 Cloche
 Cubreplatos

56345-AA GLASS
 Ø 11 cm - Ø 4 3/8 in.



MADAME
Footed saucer
 Piattino con piede
 Untertasse mit Fuß
 Soucoupe avec pied
 Plato con patas

56396-A6 18-10 S/S
55396-A6 Silverplated
55396QA6 PVD Gold

Ø 12 cm Ø 4 7/8 in.

Resin, Black marble





**KYMA
Stand**
Alzata
Servierplatte auf Fuß
Étagère
Estante

56237-17 18-10 S/S
55237-17 Silverplated
55237G17 PVD Gold

Ø 17 cm h 14 cm
Ø 6 1/4 in. h 5 1/2 in.



**KYMA
Stand**
Alzata
Servierplatte auf Fuß
Étagère
Estante

56237-24 18-10 S/S
55237-24 Silverplated
55237G24 PVD Gold

Ø 24 cm h 18,5 cm
Ø 9 1/2 in. h 7 3/4 in.



**KYMA
Stand**
Alzata
Servierplatte auf Fuß
Étagère
Estante

56237-28 18-10 S/S
55237-28 Silverplated
55237G28 PVD Gold

Ø 28 cm h 8,5 cm
Ø 11 in. h 3 3/4 in.



**MADAME
Stand**
Alzata
Servierplatte auf Fuß
Étagère
Estante

56320-A6 18-10 Diamond S/S
55320-A6 Silverplated
55320GA6 PVD Gold

Ø 23x15 cm h 2 cm
Ø 8 7/8x5 in. h 3/4 in.

Resin, Black marble



**MADAME
Stand**
Alzata
Servierplatte auf Fuß
Étagère
Estante

56340-A6 18-10 Diamond S/S
55340-A6 Silverplated
55340GA6 PVD Gold

Ø 23x15 cm h 4 cm
Ø 8 7/8x5 in. h 2 1/4 in.

Resin, Black marble



**MADAME
Stand**
Alzata
Servierplatte auf Fuß
Étagère
Estante

56360-A6 18-10 Diamond S/S
55360-A6 Silverplated
55360GA6 PVD Gold

Ø 23x15 cm h 6 cm
Ø 8 7/8x5 in. h 4 1/4 in.

Resin, Black marble





PENELOPE
Dome cover
Cloche
Speiseeglocke
Cloche
Cubreplatos

56574-B6 18-10 S/S
55574-B6 Silverplated
55574GB6 PVD Gold

Ø 14,5 cm h 20 cm
Ø 6¼ in., h 8 in.

Resin, Obsidian Black



PENELOPE
Wine cooler
Secchio vino
Weissweinkühler
Seau à vin
Cubo vino

56579-A6 18-10 S/S
55579-A6 Silverplated S/S
55579GA6 PVD Gold
55579PA6 PVD Champagne

Ø 14,5 cm h 15 cm
Ø 6¼ in., h 6 in.

Resin, Obsidian Black



PENELOPE
Wine cooler
Secchio vino
Weissweinkühler
Seau à vin
Cubo vino

56579-B6 18-10 S/S
55579-B6 Silverplated S/S
55579GB6 PVD Gold
55579PB6 PVD Champagne

Ø 18 cm h 20 cm
Ø 7¼ in., h 8 in.

Resin, Obsidian Black



PENELOPE
Ice bucket
Secchio ghiaccio
Eisbehälter
Seau à glace
Cubitera hielo

56572-B6 18-10 S/S

Ø 17,1 cm h 18,7 cm Lt 4,1
Ø 6¾ in., h 8 ½ in., 10 ⅞ oz.

Resin, Obsidian Black



PENELOPE
Wine cooler stand
Supporto secchio spumante
Weinkühlerständer
Support pour seau à champagne
Soporte cubo de champaña

56571-B6 18-10 S/S

Ø 30 cm h 77 cm
Ø 12 in., h 30 ½ in.

Resin, Obsidian Black

PENELOPE
Table holder for wine cooler
Supporto da tavola per secchio vino
Tischhalterung für Weinkühler
Support de table pour seau à vin
Soporte de mesa para cubo vino

56971-D6 18-10 Diamond S/S
56971GD6 PVD Diamond Gold
56971PD6 PVD Diamond Champagne

Ø 17,6 cm - Ø 8 in.

* SUITABLE ONLY FOR
Ø 18,3 cm wine coolers and tables 2,5 cm thick
* ADATTO SOLO PER SECCHI VINO DA
Ø 18,3 cm e tavoli da 2,5 cm di spessore



Madame



holloware design

Madame

design Centro Stile Sambonet

Hotel & Restaurant Service

sambonet®



Stand
Alzata
Servierplatte auf Fuß
Étagère
Estante

56336-D3 18-10 S/S

Ø 22 cm h 9,5 cm
Ø 8 5/8 in. h 3 3/4 in.

Resin, Blue Lapis Lazuli



Footed cup
Coppa con piede
Schale auf Fuß
Coupe sur pied
Copa con base

56309-A3 18-10 S/S

Ø 11 cm h 9,5 cm
Ø 4 1/8 in. h 3 3/4 in.

Resin, Blue Lapis Lazuli



Stand
Alzata
Servierplatte auf Fuß
Étagère
Estante

56339-A3 18-10 S/S

Ø 16 cm h 5 cm
Ø 6 1/4 in. h 2 in.

Resin, Blue Lapis Lazuli



Footed cup
Coppa con piede
Schale auf Fuß
Coupe sur pied
Copa con base

55395-D6 Silverplated

Ø 26 cm h 15,3 cm
Ø 10 1/4 in. h 6 in.

Resin, Black Marble



Footed cup
Coppa con piede
Schale auf Fuß
Coupe sur pied
Copa con base

56309-A6 Silverplated

Ø 11 cm h 9,5 cm
Ø 4 1/8 in. h 3 3/4 in.

Resin, Black Marble



Stand
Alzata
Servierplatte auf Fuß
Étagère
Estante

55336-D6 Silverplated

Ø 22 cm h 9,5 cm
Ø 8 5/8 in. h 3 3/4 in.

Resin, Black Marble

Madame



Footed cup
Coppa con piede
Schale auf Fuß
Coupe sur pied
Copa con base

56395UC1 PVD Rum

Ø 26 cm h 15,3 cm
Ø 10 1/4 in. h 6 in.

Resin, Pink Onyx



Footed cup
Coppa con piede
Schale auf Fuß
Coupe sur pied
Copa con base

56309UA1 PVD Rum

Ø 11 cm h 9,5 cm
Ø 4 1/8 in. h 3 3/4 in.

Resin, Pink Onyx



Stand
Alzata
Servierplatte auf Fuß
Étagère
Estante

56337UE1 PVD Rum

Ø 30 cm h 14 cm
Ø 11 3/4 in. h 5 1/2 in.

Resin, Pink Onyx

holloware design

Madame



Footed cup
Coppa con piede
Schale auf Fuß
Coupe sur pied
Copa con base

55338GA4 PVD Gold

Ø 20,5 cm h 11 cm
Ø 8 1/8 in., h 4 3/8 in.

Resin, Green Malachite



Stand
Alzata
Servierplatte auf Fuß
Étagère
Estante

55337GC4 PVD Gold

Ø 30 cm h 9,5 cm
Ø 11 1/4 in., h 3 3/4 in.

Resin, Green Malachite



Footed cup
Coppa con piede
Schale auf Fuß
Coupe sur pied
Copa con base

55338MB5 PVD Parfait Amour

Ø 20,5 cm h 11 cm
Ø 8 1/8 in., h 4 3/8 in.

Resin, White Marble



Stand
Alzata
Servierplatte auf Fuß
Étagère
Estante

55336MD5 PVD Parfait Amour

Ø 22 cm h 9,5 cm
Ø 8 3/4 in., h 3 3/4 in.

Resin, White Marble



Footed cup
Coppa con piede
Schale auf Fuß
Coupe sur pied
Copa con base

55395GD2 PVD Gold

Ø 26 cm h 15,3 cm
Ø 10 1/4 in., h 6 in.

Resin, Green Jade



Stand
Alzata
Servierplatte auf Fuß
Étagère
Estante

55336GD2 PVD Gold

Ø 22 cm h 9,5 cm
Ø 8 3/4 in., h 3 3/4 in.

Resin, Green Jade

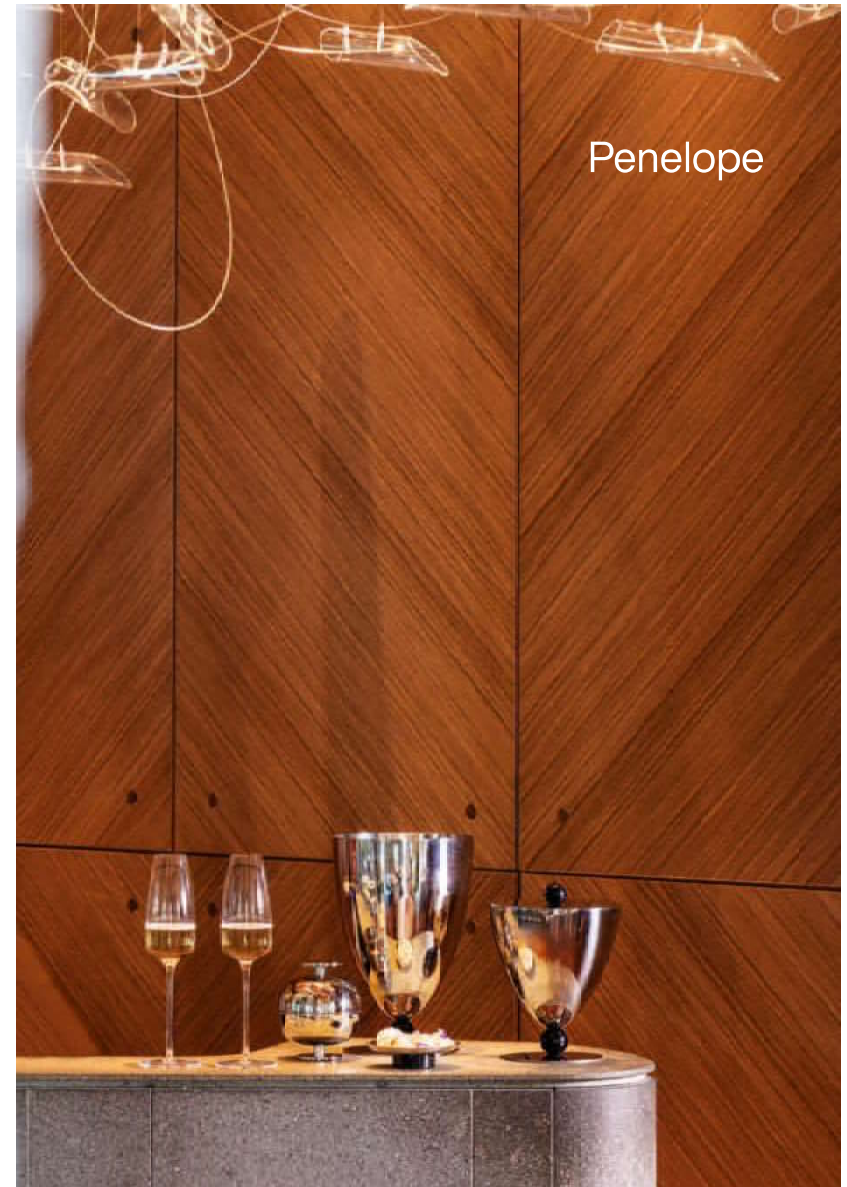


Stand
Alzata
Servierplatte auf Fuß
Étagère
Estante

55339GB2 PVD Gold

Ø 16 cm h 5 cm
Ø 6 1/4 in., h 2 in.

Resin, Green Jade



Penelope

Penelope

design Centro Stile Sambonet

Hotel & Restaurant Service

sambonet®



Bowl
Coppa
Schale
Bol
Copa

56575-A7 18-10 S/S

Ø 13,5 cm h 5,5 cm
Ø 5 in, h 2¼ in.

Resin, Amazonite Green



Bowl
Coppa
Schale
Bol
Copa

56575-A6 Silverplated

Ø 13,5 cm h 5,5 cm
Ø 5 in, h 2¼ in.

Resin, Obsidian Black



Bowl
Coppa
Schale
Bol
Copa

56575GA8 PVD Gold

Ø 13,5 cm h 5,5 cm
Ø 5 in, h 2¼ in.

Resin, Carnelian Red



Bowl
Coppa
Schale
Bol
Copa

56575UA1 PVD Rum

Ø 13,5 cm h 5,5 cm
Ø 5 in, h 2¼ in.

Resin, Jasper Rose



Centerpiece
Centrotavola
Tafelaufsatz
Centre de table
Centro mesa

56576-B7 18-10 S/S

Ø 20,5 cm h 16,5 cm
Ø 8 in, h 6¾ in.

Resin, Amazonite Green



Centerpiece
Centrotavola
Tafelaufsatz
Centre de table
Centro mesa

56576-B6 Silverplated

Ø 20,5 cm h 16,5 cm
Ø 8 in, h 6¾ in.

Resin, Obsidian Black



Centerpiece
Centrotavola
Tafelaufsatz
Centre de table
Centro mesa

56576GB8 PVD Gold

Ø 20,5 cm h 16,5 cm
Ø 8 in, h 6¾ in.

Resin, Carnelian Red



Centerpiece
Centrotavola
Tafelaufsatz
Centre de table
Centro mesa

56576UB1 PVD Rum

Ø 20,5 cm h 16,5 cm
Ø 8 in, h 6¾ in.

Resin, Jasper Rose



Bowl
Coppa
Schale
Bol
Copa

56575-B7 18-10 S/S

Ø 20,5 cm h 7,5 cm
Ø 8 in, h 3¼ in.

Resin, Amazonite Green



Bowl
Coppa
Schale
Bol
Copa

56575-B6 Silverplated

Ø 20,5 cm h 7,5 cm
Ø 8 in, h 3¼ in.

Resin, Obsidian Black



Bowl
Coppa
Schale
Bol
Copa

56575GB8 PVD Gold

Ø 20,5 cm h 7,5 cm
Ø 8 in, h 3¼ in.

Resin, Carnelian Red



Bowl
Coppa
Schale
Bol
Copa

56575UB1 PVD Rum

Ø 20,5 cm h 7,5 cm
Ø 8 in, h 3¼ in.

Resin, Jasper Rose



Centerpiece
Centrotavola
Tafelaufsatz
Centre de table
Centro mesa

56576-C7 18-10 S/S

Ø 26 cm h 16 cm
Ø 8¾ in, h 6¼ in.

Resin, Amazonite Green



Centerpiece
Centrotavola
Tafelaufsatz
Centre de table
Centro mesa

56576-C6 Silverplated

Ø 26 cm h 16 cm
Ø 8¾ in, h 6¼ in.

Resin, Obsidian Black



Centerpiece
Centrotavola
Tafelaufsatz
Centre de table
Centro mesa

56576GC8 PVD Gold

Ø 26 cm h 16 cm
Ø 8¾ in, h 6¼ in.

Resin, Carnelian Red



Bowl
Coppa
Schale
Bol
Copa

56575-C7 18-10 S/S

Ø 26 cm h 7 cm
Ø 8½ in, h 3 in.

Resin, Amazonite Green



Bowl
Coppa
Schale
Bol
Copa

56575-C6 Silverplated

Ø 26 cm h 7 cm
Ø 8½ in, h 3 in.

Resin, Obsidian Black



Bowl
Coppa
Schale
Bol
Copa

56575GC8 PVD Gold

Ø 26 cm h 7 cm
Ø 8½ in, h 3 in.

Resin, Carnelian Red



Bowl
Coppa
Schale
Bol
Copa

56575UC1 PVD Rum

Ø 26 cm h 7 cm
Ø 8½ in, h 3 in.

Resin, Jasper Rose



Centerpiece
Centrotavola
Tafelaufsatz
Centre de table
Centro mesa

56576UC1 PVD Rum

Ø 26 cm h 16 cm
Ø 8¾ in, h 6¼ in.

Resin, Jasper Rose

Penelope holloware design

Penelope holloware design

Penelope

design Centro Stile Sambonet



Stand
Alzata
Gestell
Étagère
Soporte

56578-A7 18-10 S/S

Ø 16 cm h 17,5 cm
Ø 8 7/8 x 5 in. h 4 3/4 in.

Resin, Amazonite Green



Stand
Alzata
Gestell
Étagère
Soporte

55578-A6 Silverplated

Ø 16 cm h 17,5 cm
Ø 8 7/8 x 5 in. h 4 3/4 in.

Resin, Obsidian Black



Stand
Alzata
Gestell
Étagère
Soporte

55578GA8 PVD Gold

Ø 16 cm h 17,5 cm
Ø 8 7/8 x 5 in. h 4 3/4 in.

Resin, Carnelian Red



Stand
Alzata
Gestell
Étagère
Soporte

55578UA1 PVD Rum

Ø 16 cm h 17,5 cm
Ø 8 7/8 x 5 in. h 4 3/4 in.

Resin, Jasper Rose



Pastry stand 2 tiers
Alzata dolci 2 piani
Gebäckständer, 2-stufig
Porte petits fours, 2 étages
Confitero, 2 niveles

56578-B7 18-10 S/S

Ø 22 cm h 22 cm
Ø 8 1/2 in. h 8 1/2 in.

Resin, Amazonite Green



Pastry stand 2 tiers
Alzata dolci 2 piani
Gebäckständer, 2-stufig
Porte petits fours, 2 étages
Confitero, 2 niveles

56578-B6 Silverplated

Ø 22 cm h 22 cm
Ø 8 1/2 in. h 8 1/2 in.

Resin, Obsidian Black



Pastry stand 2 tiers
Alzata dolci 2 piani
Gebäckständer, 2-stufig
Porte petits fours, 2 étages
Confitero, 2 niveles

55578GB8 PVD Gold

Ø 22 cm h 22 cm
Ø 8 1/2 in. h 8 1/2 in.

Resin, Carnelian Red



Pastry stand 2 tiers
Alzata dolci 2 piani
Gebäckständer, 2-stufig
Porte petits fours, 2 étages
Confitero, 2 niveles

55578UB1 PVD Rum

Ø 22 cm h 22 cm
Ø 8 1/2 in. h 8 1/2 in.

Resin, Jasper Rose



Stand 6 small dishes
Alzata 6 piattini
Gebäckständer 6 schälchen
Porte 6 coupelles
Soporte 6 platillos

56577-A7 18-10 S/S

18 x 26 cm h 19 cm
7 x 8 1/4 in. h 7 1/2 in.

Resin, Amazonite Green



Stand 6 small dishes
Alzata 6 piattini
Gebäckständer 6 schälchen
Porte 6 coupelles
Soporte 6 platillos

55577-A6 Silverplated

18 x 26 cm h 19 cm
7 x 8 1/4 in. h 7 1/2 in.

Resin, Obsidian Black



Stand 6 small dishes
Alzata 6 piattini
Gebäckständer 6 schälchen
Porte 6 coupelles
Soporte 6 platillos

55577GA8 PVD Gold

18 x 26 cm h 19 cm
7 x 8 1/4 in. h 7 1/2 in.

Resin, Carnelian Red



Stand 6 small dishes
Alzata 6 piattini
Gebäckständer 6 schälchen
Porte 6 coupelles
Soporte 6 platillos

55577UA1 PVD Rum

18 x 26 cm h 19 cm
7 x 8 1/4 in. h 7 1/2 in.

Resin, Jasper Rose

Hotel & Restaurant Service

sambonet



Penelope holloware design

Penelope holloware design

Gio Ponti

design Gio Ponti

Gio Ponti holloware design



Hotel & Restaurant Service

sambonet



Miniature/Single-serve
Miniatura/Monoporzione
Miniatur/Single-Serve
Miniature/Single-serve
Miniatura/Porción Individual

56561-11 18-10 S/S
56561-11 Silverplated S/S

Ø 11 cm h 12,5 cm - Ø 4 3/8 in, h 4 7/8 in.

56561K11 PVD 2Black
56561G11 PVD Gold
56561P11 PVD Champagne
56561U11 PVD Rum



Centrepiece
Centrotavola
Tafelaufsatz
Centre de table
Centro mesa

56561-24 18-10 S/S
56561-24 Silverplated S/S
56561G24 Gold plated
56561K24 PVD 2Black
56561Q24 PVD Gold
56561P24 PVD Champagne
56561U24 PVD Rum

Ø 24 cm h 22 cm - Ø 9 3/8 in, h 8 5/8 in.

Rectangular tray with handles
Vassoio rettangolare con maniglie
Tabeltt mit Griffen, rechteckig
Plateau rectangulaire avec anses
Bandeja rectangular con asas

56560 Super mirror 18-10 S/S

-**40** 40 x 30 cm - 15 3/4 x 11 3/4 in.
-**45** 45 x 35 cm - 17 3/4 x 13 3/4 in.

Gio Ponti holloware design

Kyma
design Serena Confalonieri

ICO 2
NIG 0
AWA 4
RES 6
INTERIOR
INNOVATION
winner



Hotel & Restaurant Service

sambonet



Coaster
Sottobicchiere
Untersetzer
Sous-verre
Platillo vasos

56269-12 18/10 S/S
56259-12 Silverplated
56259U12 PVD Rum
56259G12 PVD Gold

Ø 12 cm h 0,6 cm
Ø 4 1/4 in. h 1/4 in.



Bread plate
Piatto pane
Brotteller
Plat à pain
Plato pan

56292-17 18/10 S/S
56292-17 Silverplated
56292U17 PVD Rum
56292G17 PVD Gold

Ø 17 cm h 0,8 cm
Ø 6 1/4 in. h 3/8 in.



Show plate
Sottopiatto
Platzteller
Plat à présentation
Plato de presentación

56232 18/10 S/S
56232 Silverplated
56232U PVD Rum
56232G PVD Gold

-30 Ø 31 cm h 1,6 cm - Ø 12 1/4 in. h 5/8 in.
-33 Ø 33 cm h 0,6 cm - Ø 13 in. h 1/4 in.

Kyma

holloware design



Stand
Alzata
Servierplatte auf Fuß
Étagère
Estante

56237-17 18-10 S/S
56237-17 Silverplated
56237G17 PVD Gold
56237U17 PVD Rum

Ø 17 cm h 14 cm
Ø 6 1/4 in. h 5 1/2 in.



Stand
Alzata
Servierplatte auf Fuß
Étagère
Estante

56237-24 18-10 S/S
56237-24 Silverplated
56237G24 PVD Gold
56237U24 PVD Rum

Ø 24 cm h 18,5 cm
Ø 9 1/2 in. h 7 1/4 in.



Stand
Alzata
Servierplatte auf Fuß
Étagère
Estante

56237-28 18-10 S/S
56237-28 Silverplated
56237G28 PVD Gold
56237U28 PVD Rum

Ø 28 cm h 8,5 cm
Ø 11 in. h 3 1/4 in.



Candelabra 7 lights
Candeliera 7 luci
Kerzenleuchter, 7-flaming
Chandelier, 7 bougies
Candelabro, 7 velas

56226-07 Hi-Tech S/S
56226-07 Silverplated
56226G07 Hi-Tech PVD Rum
56226G07 Hi-Tech PVD Gold

Ø 25 cm h 30 cm
9 1/8 in. h 11 1/4 in.

Kyma

holloware design

Kyma

design **Serena Confalonieri**



Square
 Quadrato
 Quadrat
 Carré
 Cuadrado

56219-25 Hi-Tech S/S
56219-26 Silverplated S/S
56219U25 Hi-Tech PVD Rum
56219G25 Hi-Tech PVD Gold

26 x 26 cm h 8,5 cm
 10¼ x 10¼ in. h 3⅜ in.



Octagon
 Ottógono
 Achteck
 Octgone
 Octágono

56223-36 Hi-Tech S/S
56223-36 Silverplated S/S
56223U36 Hi-Tech PVD Rum
56223G36 Hi-Tech PVD Gold

37 x 37 cm h 8,5 cm
 14½ x 14½ in. h 3⅜ in.



Rectangle
 Rettangolo
 Rechteck
 Hexagon
 Hexágono

56220-40 Hi-Tech S/S
56220-40 Silverplated S/S
56220U40 Hi-Tech PVD Rum
56220G40 Hi-Tech PVD Gold

41 x 26 cm h 8,5 cm
 16¼ x 10¼ in. h 3⅜ in.



Hexagon
 Esagono
 Sechseck
 Hexagon
 Hexágono

56221-30 Hi-Tech S/S
56221-30 Silverplated S/S
56221U30 Hi-Tech PVD Rum
56221G30 Hi-Tech PVD Gold

31 x 27 cm h 8,5 cm
 12¼ x 10¼ in. h 3⅜ in.

Hotel & Restaurant Service

sambonet



Kyma holloware design

Kyma holloware design

Twist

Twist holloware design



Hotel & Restaurant Service

sambonet



Oval bowl
Ciotola ovale
Universalschale, oval
Coupelle ovale
Cesta oval

56690 18-10 S/S
55690 Silverplated S/S
55690G PVD Gold
55690U PVD Rum

-14 14 x 12 cm - 6 x 4 $\frac{1}{4}$ in.
-18 18 x 15,5 cm - 7 x 6 $\frac{1}{8}$ in.
-22 22 x 19 cm - 8 $\frac{1}{2}$ x 7 $\frac{1}{2}$ in.
-26 26 x 22 cm - 10 $\frac{1}{4}$ x 8 $\frac{3}{8}$ in.



Oval bowl
Ciotola ovale
Universalschale, oval
Coupelle ovale
Cesta oval

56690 18-10 S/S
55690 Silverplated S/S

-30 30 x 25 cm - 12 $\frac{1}{4}$ x 9 $\frac{7}{8}$ in.

Twist holloware design

Sky



Square tray
Vassoio quadrato
Ausstellplatte, quadratisch
Plateau carré
Bandeja cuadrada

56780 18-10 S/S

-04 14 x 14 cm - 5½ x 5½ in.
-09 19 x 19 cm - 7½ x 7½ in.
-12 24 x 24 cm - 9½ x 9½ in.



Rectangular tray
Vassoio rettangolare
Tablett, rechteckig
Plateau rectangulaire
Bandeja rectangular

56780 18-10 S/S

-06 19 x 14 cm - 7½ x 5½ in.
-07 30 x 9 cm - 11¼ x 3½ in.



Tray mat, polyester PVC
Tovaglietta per vassoio
Tablettdeckchen
Napperon pour plateau
Mantelín para bandeja

Suitable for - Adatto a:

56729-01 10,4 x 10,4 cm - 4 x 4 in. **56780-04**
56729-02 10,4 x 15,4 cm - 4 x 6 in. **56780-06**
56729-03 16 x 16 cm - 6¼ x 6¼ in. **56780-09**
56729-04 21 x 21 cm - 8½ x 8½ in. **56780-12**

Hotel & Restaurant Service

sambonet



Milk pot
Lattiera
Milchkanne
Pot à lait
Jarra leche

56781-00 18-10 S/S

h 6 cm - 5,2 x 5,2 cm - 160 ml.
h 2½ in. - 2 x 2 in. - 5½ oz.



Coffee pot
Caffettiera
Kaffeekanne
Cafetière
Cafetera

56792-00 18-10 S/S

h 16 cm - 5,2 x 5,2 cm - 400 ml.
h 6¼ in. - 2 x 2 in. - 14¼ oz.



Container
Contentitore
Behälter
Récipient
Recipiente

56789-00 18-10 S/S

h 11,5 cm - 5,2 x 5,2 cm
h 4½ in. - 2 x 2 in.



Oil pourer
Oliera
Ölstander
Huillér
Acetiera

56785-00 18-10 S/S

h 14,5 cm - 5,2 x 5,2 cm - 310 ml.
h 5¾ in. - 2 x 2 in. - 11 oz.



Vinegar pourer
Acetiera
Essigstander
Huillér
Vinagrera

56786-00 18-10 S/S

h 12 cm - 5,2 x 5,2 cm - 240 ml.
h 4¾ in. - 2 x 2 in. - 8½ oz.



Pepper shaker
Spärgipepe
Pfefferstreuer
Poivrier
Pimentero

56787-00 18-10 S/S

h 4,5 cm 5,2 x 2,6 cm - h 1 ½ in. 2 x 1 in.

Salt shaker
Spärgisale
Salzstreuer
Salière
Salero

56787-01 18-10 S/S



Sugar / tea bags holder
Portabusline zucchero / tè
Tee / Zuckertütenschale
Conteneur à sucre / thé
Contenedor sobres azúcar / té

56782-00 18-10 S/S

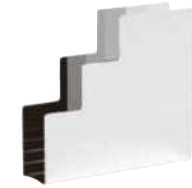
h 3,5 cm - 10,4 x 5,2 cm
h 1¾ in. - 4¼ x 2 in.



Flower vase
Vasetto fiori
Blumenvase
Vase à fleurs
Florero

56784-00 18-10 S/S

h 9 cm - 5,2 x 5,2 cm
h 3¾ in. - 2 x 2 in.



Napkin holder
Portatovaglioli
Serviettenhalter
Vase à serviettes
Servilletero

56791-00 18-10 S/S

h 9 cm - 10,4 x 2,6 cm
h 3¾ in. - 4¼ x 1 in.



Honey holder with lid
Portamiele con coperchio
Behälter für Honig mit Deckel
Porte miel avec couvercle
Contenedor para miel con tapa

56790-00 18-10 S/S

h 6 cm - 5,2 x 5,2 cm - h 2½ in. - 2 x 2 in.



Jam holder with lid
Portamarmellata con coperchio
Behälter für Konfitüre mit Deckel
Porte confitures avec couvercle
Contenedor para confituras con tapa

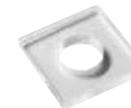
56783-00 18-10 S/S

h 2,5 cm - 5,2 x 5,2 cm - 68 ml.
h 1 in. - 2 x 2 in. - 2½ oz.



Small spoons, 6 pcs
Palettina, 6 pz
Mini-Löffel, 6-llg
Cuillères, 6 pcs
Pallita, 6 pz

56788-00 18-10 S/S



Lid
Coperchio
Deckel
Couvercle
Tapa

56784-AA

5,2 x 5,2 cm
2 x 2 in.



Happy hour set

56791-14 18-10 S/S

- Composition - Composizione**
- 1x **56780-12** Square tray - Vassoio quadrato - 24 x 24 cm - 9 7/16 x 9 7/16 in.
 - 2x **56782-00** Sugar / tea bags holder - Portabustine zucchero / tè
 - 2x **56783-00** Jam / honey holder with lid - Portamarmellata con coperchio
 - 1x **56784-00** Flower vase with lid - Vasetto fiori con coperchio
 - 2x **56784-AA** Lid - Coperchio
 - 1x **56785-00** Oil pourer - Oliera
 - 1x **56786-00** Vinegar pourer - Acetiera
 - 1x **56787-00** Pepper shaker - Spargipepe
 - 1x **56787-01** Salt shaker - Spargisale
 - 1x **56789-00** Container - Contenitore
 - 1x **56788-00** Small spoons, 6 pcs - Palettina, 6 pz

Breakfast set

56794-07 18-10 S/S

- Composition - Composizione**
- 1x **56780-09** Square tray - Vassoio quadrato - 19 x 19 cm - 7 1/2 x 7 1/2 in.
 - 1x **56781-00** Milk pot - Lattiera
 - 1x **56782-00** Sugar / tea bags holder - Portabustine zucchero / tè
 - 1x **56784-00** Flower vase with lid - Vasetto fiori con coperchio
 - 1x **56783-00** Jam / honey holder with lid - Portamarmellata con coperchio
 - 2x **56790-00** Honey holder with lid - Portamiele con coperchio
 - 1x **56784-AA** Lid - Coperchio

Tea time set

56790-10 18-10 S/S

- Composition - Composizione**
- 1x **56780-09** Square tray - Vassoio quadrato - 19 x 19 cm - 7 1/2 x 7 1/2 in.
 - 1x **56781-00** Milk pot - Lattiera
 - 2x **56782-00** Sugar / tea bags holder - Portabustine zucchero / tè
 - 2x **56783-00** Jam / honey stand with lid - Portamarmellata con coperchio
 - 1x **56784-00** Flower vase - Vasetto fiori
 - 2x **56784-AA** Lid - Coperchio
 - 1x **56788-00** Small spoons, 6 pcs - Palettina, 6 pz

Lunch set

56793-06 18-10 S/S

- Composition - Composizione**
- 1x **56780-04** Square tray - Vassoio quadrato - 14 x 14 cm - 5 x 5 in.
 - 1x **56785-00** Oil pourer - Oliera
 - 1x **56786-00** Vinegar pourer - Acetiera
 - 1x **56787-00** Pepper shaker - Spargipepe
 - 1x **56787-01** Salt shaker - Spargisale

Set, 15 pcs

56780-15 18-10 S/S

- Composition - Composizione**
- 1x **56780-09** Square tray - Vassoio quadrato - 19 x 19 cm - 7 1/2 x 7 1/2 in.
 - 1x **56785-00** Oil pourer - Oliera
 - 1x **56786-00** Vinegar pourer - Acetiera
 - 1x **56781-00** Milk pot - Lattiera
 - 1x **56787-00** Pepper shaker - Spargipepe
 - 1x **56787-01** Salt shaker - Spargisale
 - 1x **56782-00** Sugar / tea bags holder - Portabustine zucchero / tè
 - 2x **56783-00** Jam / honey holder with lid - Portamarmellata con coperchio
 - 1x **56788-00** Small spoons, 6 pcs - Palettina, 6 pz

Set, 19 pcs

56780-19 18-10 S/S

- Composition - Composizione**
- 1x **56780-12** Square tray - Vassoio quadrato - 24 x 24 cm - 9 7/16 x 9 7/16 in.
 - 1x **56784-00** Flower vase with lid - Vasetto fiori con coperchio
 - 1x **56785-00** Oil pourer - Oliera
 - 1x **56786-00** Vinegar pourer - Acetiera
 - 1x **56781-00** Milk pot - Lattiera
 - 1x **56787-00** Pepper shaker - Spargipepe
 - 1x **56787-01** Salt shaker - Spargisale
 - 1x **56782-00** Sugar / tea bags holder - Portabustine zucchero / tè
 - 4x **56783-00** Jam / honey holder with lid - Portamarmellata con coperchio
 - 1x **56784-AA** Lid - Coperchio
 - 1x **56788-00** Small spoons, 6 pcs - Palettina, 6 pz



Malia



Show plate
Piatto presentazione
Platzteller
Plat à présentation
Plato de presentaciòn

56658-33 18-10 S/S
55658-33 Silverplated S/S
Ø 33 cm - Ø 12 7/8 in.



Rectangular tray
Vassoio rettangolare
Tablett, rechteckig
Plateau rectangulaire
Bandeja rectangular

56652-48 18-10 S/S
55652-48 Silverplated S/S
48 x 38 cm - 18 7/8 x 14 7/8 in.



Bottle stand
Sottobottiglia
Flaschenteller
Sous-bouteille
Platillo bajo botellas

56658-14 18-10 S/S
55658-14 Silverplated S/S
Ø 14 cm - Ø 5 1/2 in.



Linear



Rectangular tray
Vassoio rettangolare
Tablett, rechteckig
Plateau rectangulaire
Bandeja rectangular

56820-48 18-10 S/S
55820-48 Silverplated S/S
48 x 19 cm - 19 x 7 in.



Rectangular tray with cutting board
Vassoio rettangolare con tagliere
Ausstellplatte mit Tranchierbrett, rechteckig
Plateau rectangulaire avec planche à découper
Bandeja rectangular con plancha para cortar

56820-68 18-10 S/S
55820-68 Silverplated S/S
48 x 19 cm - 19 x 7 in.

Cutting board
Tagliere
Schneidbrett
Planche à découper
Plancha para cortar

56820-AA Wood



Lucy



Hotel & Restaurant Service

sambonet



Show plate
 Piatto presentazione
 Platzteller
 Plat à présentation
 Plato de presentación

56932-30 18-10 S/S
55932-30 Silverplated S/S
 30 x 30 cm - 11 x 11 in.



Coaster
 Sottobicchiere
 Untersetzer
 Sous-verre
 Pláttillo vasos

56959-14 18-10 S/S
55959-14 Silverplated S/S
 14 x 14 cm - 5 x 5 in.

Lucy holloware design

Lucy holloware design



Square tray
 Vassoio quadrato
 Tablett, quadratisch
 Plateau carré
 Bandeja cuadrada
56919-36 18-10 S/S
55919-36 Silverplated S/S
 36 x 36 cm - 14 x 14 in.



Rectangular tray
 Vassoio rettangolare
 Tablett, rechteckig
 Plateau rectangulaire
 Bandeja rectangular
56920-60 18-10 S/S
55920-60 Silverplated S/S
 60 x 37 cm - 20 x 14 in.



Grated cheese pot
 Formaggiera
 Käsedose
 Ravier à parmesan
 Quesera
56979-11 18-10 S/S
55979-11 Silverplated S/S
 11 x 11 cm - 4 1/2 x 4 1/2 in.

Only transparent bowl
 Solo ciotolina trasparente
56979-AA Polycarbonate
 11 x 11 cm - 4 1/2 x 4 1/2 in.



Bowl
 Ciotolina
 Schale
 Coupelle
 Copta
56992 18-10 S/S
55992 Silverplated S/S
-08 8,5 x 8,5 cm - 3 x 3 in.
-12 12 x 12 cm - 5 x 5 in.



Bread basket
 Cestino pane
 Brotkorb
 Corbeille à pain
 Cesta pan
56992-24 18-10 S/S
55992-24 Silverplated S/S
 24 x 24 cm - 9 1/2 x 9 1/2 in.



holloware design

Showplates

Created to bring the refinement and elegance to the table that only Sambonet can achieve with the hardness of stainless steel, these show plates are characterized by their completeness: from design to classic, passing through the modern, every set finds its perfect addition.

Nati per portare in tavola la raffinatezza e l'eleganza che solo Sambonet può dare alla durezza dell'acciaio, i piatti presentazione si caratterizzano per la completezza dell'offerta: dal design al classic passando per il modern, ogni servizio trova il suo perfetto complemento.

holloware design

Showplates

Hotel & Restaurant Service

sambonet



Kyma

- 56232 18-10 S/S
- 56232 Silverplated S/S
- 55232C PVD Copper
- 55232G PVD Gold

-30 Ø 31 cm h. 1,6 cm - Ø 12¼ in. h. 1,6 in.
 -33 Ø 33 cm h. 0,6 cm - Ø 12¾ in. h. 1,6 in.



Lucy

- 56932-30 18-10 S/S
- 56932-30 Silverplated S/S

30 x 30 cm - 11 x 11 in.



Elite

- 56032 18-10 S/S
- 56032 Silverplated S/S

-31 outside - esterno: Ø 31 cm - Ø 12¼ in.
 inside - interno: Ø 19,6 cm - Ø 7¾ in.
 -33 outside - esterno: Ø 33 cm - Ø 13 in.
 inside - interno: Ø 20,5 cm - Ø 8 in.
 -51 outside - esterno: Ø 31 cm - Ø 12¼ in.
 inside - interno: Ø 19,6 cm - Ø 7¾ in.
 -53 outside - esterno: Ø 33 cm - Ø 13 in.
 inside - interno: Ø 20,5 cm - Ø 8 in.



Contour

- 55032-31 Silverplated S/S

outside - esterno: Ø 31 cm - Ø 12¼ in.
 inside - interno: Ø 19,8 cm - Ø 7¾ in.



Malia

- 56658-33 18-10 S/S
- 56658-33 Silverplated S/S

Ø 33 cm - Ø 12¾ in.



Show plate

- Piatto presentazione
- Platzteller
- Plat à présentation
- Plato de presentación

- 56931-32 18-10 S/S
- 55931-32 Silverplated S/S
- 54931-32 Diamond
- 54931P32 White Gold Diamond
- 54931N32 Red Gold Diamond
- 56931B32 PVD Black
- 56931G32 PVD Gold
- 55931P32 PVD Champagne
- 55931U32 PVD Rum

Ø 32 cm - Ø 12½ in.



Avenue

- 56033-31 18-10 S/S
- 56033-31 Silverplated S/S
- 54033-31 Diamond
- 54033P31 White Gold Diamond
- 54033N31 Red Gold Diamond

Ø 31 cm - Ø 12¼ in.



Linea Q

- 56621-28 18-10 S/S
- 55621-28 Silverplated S/S

28 x 28 cm - 11 x 11 in.



Linea O

- 56621-30 18-10 S/S
- 55621-30 Silverplated S/S

30 x 30 cm - 11¾ x 11¾ in.

Showplates holloware

Showplates holloware design



Holder with oval oven dish
 Supporto con pirofilia ovale
 Halterung mit ovaler Auflaufform
 Support avec plat ovale
 Soporte con fuente oval

56401L Mirror 18-10 S/S
55401L Silverplated 18-10 S/S
56401S Antique 18-10 S/S

-35 35 x 24 cm - 13³/₄ x 9¹/₂ in.
 -39 39 x 27 cm - 15¹/₄ x 10¹/₂ in.
 -44 44 x 27 cm - 17¹/₄ x 10¹/₂ in.

Porcelain
 Pirofilia
 Schale
 Porcelaine
 Porcelana

56401-PC 35 x 24 cm - 13³/₄ x 9¹/₂ in.
56401-PA 39 x 27 cm - 15¹/₄ x 10¹/₂ in.
56401-PB 44 x 27 cm - 17¹/₄ x 10¹/₂ in.



Holder with 3 appetizer dishes
 Supporto con 3 antipastiere
 Halterung mit 3 Vorspeisenschalen
 Support avec 3 bols à hors d'oeuvre
 Soporte con 3 fuentes para aperitivo

56424L03 Mirror 18-10 S/S
55424L03 Silverplated 18-10 S/S
56424S03 Antique 18-10 S/S

38 x 18 cm h 5 - 14¹/₄ x 7 in.

Porcelain
 Pirofilia
 Schale
 Porcelaine
 Porcelana

56424-PA 18 x 12 cm - 7 x 4³/₄ in.



Holder with rectangular dish
 Supporto con pirofilia rettangolare
 Halterung mit rechteckiger Auflaufform
 Support avec plat à rectangulaire
 Soporte con fuente rectangular

56402L Mirror 18-10 S/S
55402L Silverplated 18-10 S/S
56402S Antique 18-10 S/S

-35 35 x 22 cm - 13³/₄ x 8¹/₂ in.
 -41 41 x 27 cm - 16 x 10¹/₂ in.

Porcelain
 Pirofilia
 Schale
 Porcelaine
 Porcelana

56402-PA 35 x 22 cm - 13³/₄ x 8¹/₂ in.
56402-PB 41 x 27 cm - 16 x 10¹/₂ in.



New Living



Holder with fish oven dish
 Supporto con pirofilia forno per pesce
 Halterung mit Fisch-Aufflaufform
 Support avec plat poisson à four
 Soporte con fuente pescada para horno

Porcelain
 Pirofilia
 Schale
 Porcelaine
 Porcelana

56403L Mirror 18-10 S/S
56403L Silverplated 18-10 S/S

56403-PA 48 x 17 cm - 18¾ x 6½ in.
56403-AB 65 x 24,5 cm - 25½ x 9 in.

48 48 x 17 cm - 18¾ x 6½ in.
65 65 x 25 cm - 25½ x 9¾ in.

56403S48 Antique 18-10 S/S
 48 x 17 cm - 18¾ x 6½ in.



Holder with spaghetti dish
 Supporto con spaghetti
 Halterung mit Spaghettischale
 Support avec bol à spaghetti
 Soporte con bol para espaguetis

Porcelain
 Pirofilia
 Schale
 Porcelaine
 Porcelana

56420L Mirror 18-10 S/S
56420L Silverplated 18-10 S/S
56420S Antique 18-10 S/S

56420-PA Ø 27 cm - Ø 10½ in.
56420-PB Ø 32 cm - Ø 12½ in.

27 Ø 27 cm - Ø 10½ in.
32 Ø 32 cm - Ø 12½ in.



Holder with rice dish
 Supporto con risottiera
 Halterung mit Risottoschale
 Support avec plat à risotto
 Soporte con fuente para risotto

Porcelain
 Pirofilia
 Schale
 Porcelaine
 Porcelana

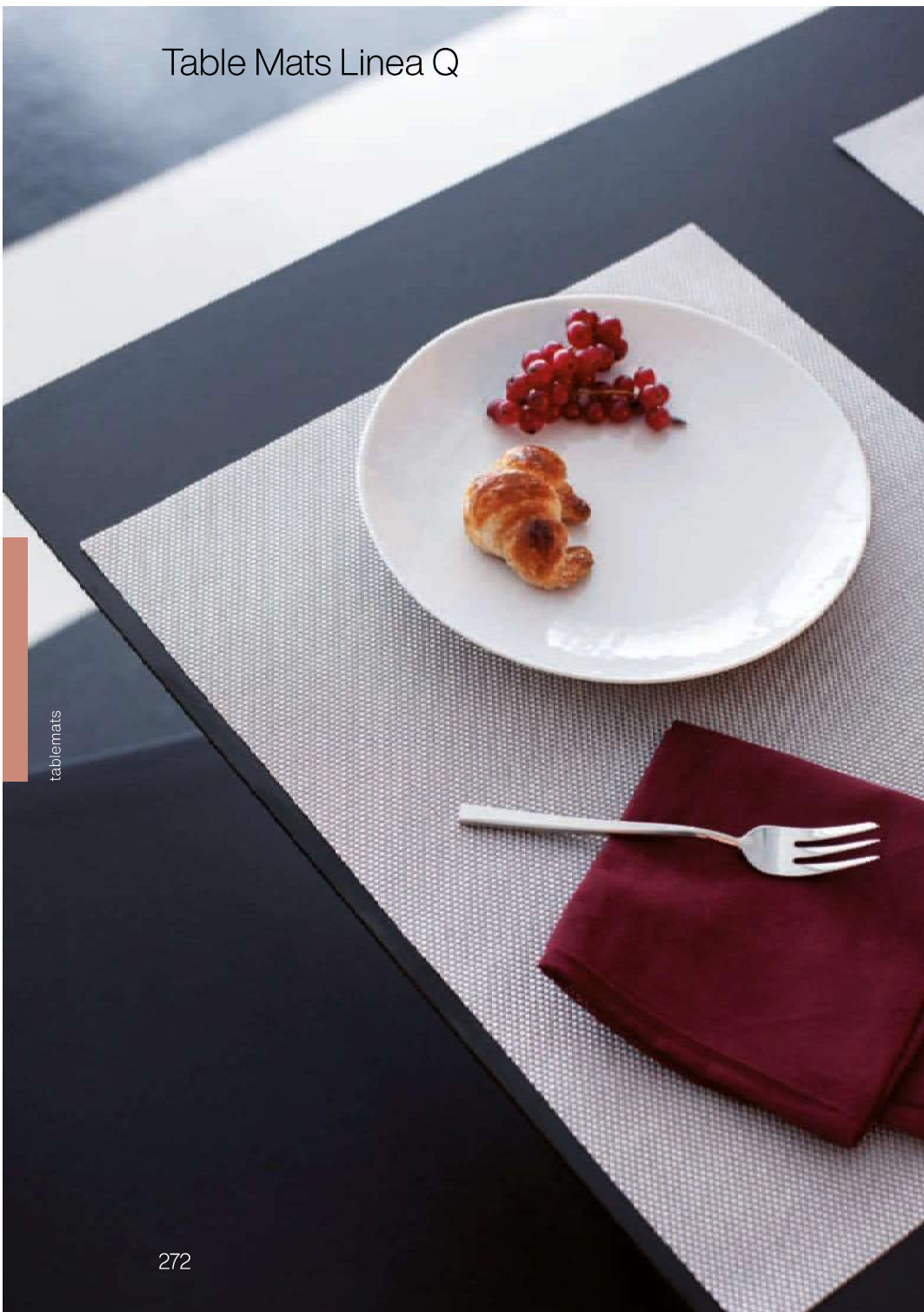
56421L36 Mirror 18-10 S/S
56421L36 Silverplated 18-10 S/S
56421S36 Antique 18-10 S/S

56421-PA Ø 36 cm - Ø 14¼ in.

Ø 36 cm - Ø 14¼ in.



Table Mats Linea Q



tablemats

Hotel & Restaurant Service

sambonet



Koala Koala
56529-FL 42 x 33 cm - 16½ x 13 in.



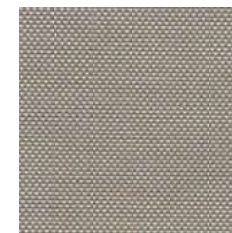
Silver Silver
56529-FN 42 x 33 cm - 16½ x 13 in.



Light melange Melange chiaro
56529-CA 42 x 33 cm - 16½ x 13 in.
56529-DA 48 x 36 cm - 19 x 14 in.



Dark melange Melange scuro
56529-CC 42 x 33 cm - 16½ x 13 in.



Crispy Crispy
56529-EC 42 x 33 cm - 16½ x 13 in.



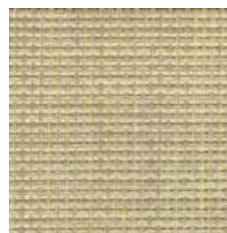
Beige-grey Beige-grigio
56529-CD 42 x 33 cm - 16½ x 13 in.
56529-DD 48 x 36 cm - 19 x 14 in.



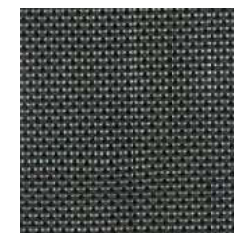
Brown-black Marrone-nero
56529-CE 42 x 33 cm - 16½ x 13 in.



Grey Grigio
56529-CF 42 x 33 cm - 16½ x 13 in.



Beige Beige
56529-CS 42 x 33 cm - 16½ x 13 in.
56529-DS 48 x 36 cm - 19 x 14 in.



Black Nero
56529-CT 42 x 33 cm - 16½ x 13 in.

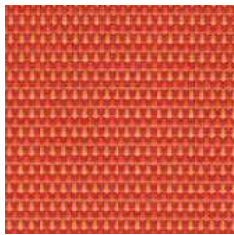


Black Nero
56529-EA 42 x 33 cm - 16½ x 13 in.

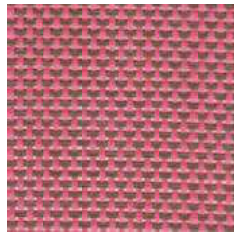
tablemats

Table Mats Linea Q

Table mat, set 6 pcs - Tovaglietta americana, set 6 pz
 Material: 50% polyester, 50% polyvinyl chloride



Pink-orange Rosa-arancione
56529-EV 42 x 33 cm - 16½ x 13 in.



Strawberry Fragola
56529-EX 42 x 33 cm - 16½ x 13 in.



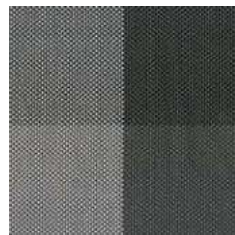
Coral Corallo
56529-ED 42 x 33 cm - 16½ x 13 in.



Straw Paglia
56529-EH 42 x 33 cm - 16½ x 13 in.



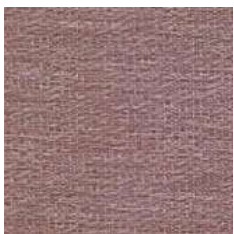
Vintage Vintage
56529-EK 42 x 33 cm - 16½ x 13 in.



Black squares Nero a quadri
56529-FH 42 x 33 cm - 16½ x 13 in.



Ground Suolo
56529-EI 42 x 33 cm - 16½ x 13 in.



Sand Sabbia
56529-EJ 42 x 33 cm - 16½ x 13 in.



Grey squares Grigio a quadri
56529-FI 42 x 33 cm - 16½ x 13 in.



Gray striped Righe grigie
56529-EM 42 x 33 cm - 16½ x 13 in.



Green striped Righe verdi
56529-EN 42 x 33 cm - 16½ x 13 in.

Runners

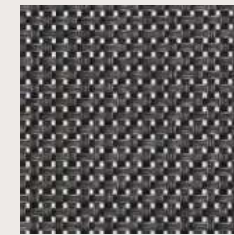
Hotel & Restaurant Service

sambonet

Runner, sold individually - Runner, venduti singolarmente
 Material: 50% polyester, 50% polyvinyl chloride



Runner, beige Runner, beige
42950-92 42 x 180 cm - 16½ x 70¾ in.



Runner, black Runner, nero
42950-93 42 x 180 cm - 16½ x 70¾ in.



Runner, brown Runner, marrone
42950-94 42 x 180 cm - 16½ x 70¾ in.

tablemats

Linea Q
 tablemats